



A Vision 2030 Flagship Project



# National Drought Management Authority

## Kajiado County

### Drought Early Warning Bulletin for October 2025

OCTOBER DEW PHASE	Early Warning Phase Classification			
<b>Drought Status: ALERT</b>    <b>Maandalizi ya mapema</b>	<b>LIVELIHOOD ZONE</b>	<b>EW PHASE</b>	<b>TRENDS</b>	
	PASTORAL	<b>ALERT</b>	STABLE	
	AGRO-PASTORAL	<b>ALERT</b>	STABLE	
	MIXED FARMING	<b>ALERT</b>	STABLE	
	<b>COUNTY</b>	<b>ALERT</b>	<b>STABLE</b>	
<p><b>Drought Situation &amp; EW Phase Classification</b></p> <p><b>Biophysical Indicators</b></p> <ul style="list-style-type: none"> <li>✓ The end of October marked the onset of short rains that come late and poorly distributed. Surface water sources are on average 20 % recharged. However, the forage is still poor.</li> </ul> <p><b>Socio Economic Indicators (Impact Indicators)</b></p> <p><b>Production Indicators</b></p> <ul style="list-style-type: none"> <li>✓ Livestock body condition range from good to fair. Milk production is on a declining trend but within normal range</li> </ul> <p><b>Access indicators</b></p> <ul style="list-style-type: none"> <li>✓ Distances to water sources are within the normal range and were likely to improve.</li> <li>✓ Terms of trade are above the normal range but on a declining trend which indicates a reduction in a household's purchasing power.</li> </ul> <p><b>Utilization Indicators</b></p> <ul style="list-style-type: none"> <li>✓ The risk of under-five malnutrition has remained slightly below the range for the last five years, suggesting better household's access to nutritious food and or better household health situation.</li> <li>✓ 5.7% of households were food insecure while 26.2 percent were vulnerable to food insecurity.</li> <li>✓ Although, the coping strategy index was below average, it was increasing steadily which suggest continuous strain of households to obtain food or money to buy foods</li> </ul>	<b>Biophysical Indicators</b>	<b>Observed Value</b>	<b>Normal Range/LTA</b>	
	Pasture condition	Fair - Poor	Good - Fair	
	Browse condition	Fair	Good	
	State of water	Adequate	Adequate	
	<b>Production Indicators</b>	<b>Observed LBS</b>	<b>Normal Range</b>	
	Livestock body condition	3 - 4	3 - 4	
	Milk production	2.0 lt	1.7 lt – 2.3 lt	
	Livestock migration	Outmigration	None	
	Livestock deaths	None	None	
	<b>Access Indicators</b>	<b>Observed Value</b>	<b>Normal Range</b>	
	Terms of trade (kg of maize for a goat)	97	64 – 94	
	Milk consumption	1.4 lt	1.6 lt – 2.1 lt	
	Distance to water sources	Livestock	6.8 km	6.6 km – 8.0 km
		Domestic	6.2 km	5.8 km – 7.1 km
	Cost of water at source (20 litres)	Ksh. 0-10	Ksh. 0-10	
	<b>Utilization Indicators</b>	<b>Value</b>	<b>Normal Range</b>	
	MUAC	8.3%	7.8% - 9.5%	
	CSI	5.2	6.7 – 8.1	
FCS	Acceptable	68.1%		
	Borderline	26.2%		
	Poor	5.70 %		

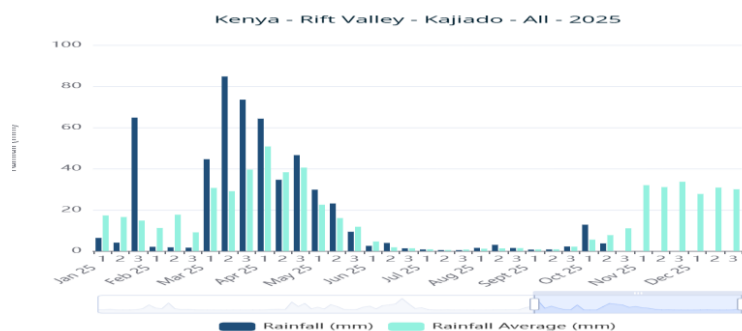
<ul style="list-style-type: none"> <li>▪ Short rains harvest</li> <li>▪ Short dry spell</li> <li>▪ Reduced milk yields</li> <li>▪ Increased HH food stock</li> </ul>	<ul style="list-style-type: none"> <li>▪ Long rains</li> <li>▪ Planting/weeding</li> <li>▪ High calving rate</li> <li>▪ Milk yields increase</li> </ul>	<ul style="list-style-type: none"> <li>▪ Long rains harvest</li> <li>▪ A long dry spell</li> <li>▪ Land preparation</li> <li>▪ Increased HH food stocks</li> </ul>	<ul style="list-style-type: none"> <li>▪ Short rains</li> <li>▪ Planting</li> <li>▪ weeding</li> </ul>								
		✓									
Jan	Feb	Mar	Apr	May	Jun	Jul	Aug	Sept	Oct	Nov	Dec

Seasonal Calendar

## 1.0 CLIMATIC CONDITIONS

### 1.1 Rainfall Performance

The onset of the short rains is normally by mid-October. This year, the onset for the October-



**Figure 1. OND Rainfall performance; Kajiado**  
Source: VAM-WFP

(Ewuaso) started receiving light to medium rains for two to three days in the third week of October (between 23<sup>rd</sup> and 25<sup>th</sup> October) 2025. By the fourth week, most parts of the county received medium to heavy rains for about two to three days (27<sup>th</sup> – 30<sup>th</sup> October 2025). The hotspots areas include Rombo, Magadi, Lenkism and Matapato south wards.

November-December rains was characterized by late onset and poor distribution both in space and time (Figure 1). The metropolitan part of the county (Ngong, Rongai, Kiserian, Isinya, Kitengela) and the northern part of Kajiado west

## 2.0 FORAGE AND WATER

### 2.1 Pasture and Browse Condition

By the end of October, pasture was depleted in most parts of the county. Pastoral West (Kajiado West sub-county) and South (Kajiado South sub-county) were the most affected areas. Browse was fair across the county especially now that some plants were sprouting. Sprouting of some vegetation a few weeks before the start of rains is normal. Forage is expected to start regenerating in most parts of the county by early November. This is because most parts of the county received medium to heavy rains in the last week of October. It is also notable that the invasive plant species such as ipomea are expected to regenerate and would most likely suppress the pasture growth and development.

### 2.2 Water Access and Utilization

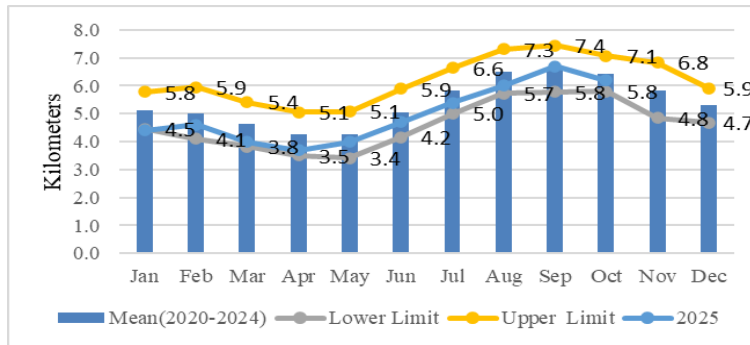
#### 2.2.1 Water Sources

By mid-October, boreholes and shallow wells were the main source of the water for the communities. In a typical year, households and livestock would be getting water mainly from pans and other surface water sources such as seasonal rivers and sand wells by mid-October. The difference in timing of water sources was due to late onset of the rains. Currently, ponds are about

20 percent recharged in most parts of the county. This is a great relieve especially to livestock.

### 2.2.2 Household Water Access and Utilization

On average, the return distance to water sources that people travelled to fetch water for domestic



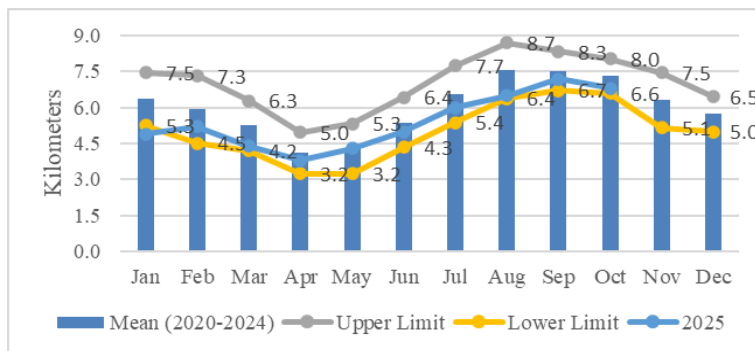
**Figure 2. Average return distance to water points from home; Kajiado, 2024-2025**

use was 6.2 km compared to 6.7 km in September. The current distances is within the normal range for this period of the year (Figure 2) when compare to the distance travelled in the last five years. It was worthy noting that three of these five years (2021, 2022 and 2023) were

characterized by long distances because of drought. The decrease in distance in October was due to the rains that was received in last week of the month. Household’s water consumption by end of October averaged between 10 lpp/day and 15 lpp/day in both Pastoral and Agro-Pastoral zones. The cost of water ranged from Ksh. 10 for a 20-litre Jerrican at the source to Ksh. 50 when delivered by a vendor. Both consumption and cost are normal at this time of the year. Most (30 %) of the households especially in the rural areas treated water for drinking by boiling.

### 2.2.3 Livestock Access to Water

Before the start of rains, livestock were trekking a return distance of 6.8 kilometers from the



**Figure 3. Average return distance to water sources from grazing fields; Kajiado, 2024-2025**

grazing fields to water sources (Figure 3). This distance has since reduced to about 6.0 after the county received some rains by the end of October. The watering frequency for livestock was now daily across all livelihood zones.

This distance is normal for this time of the year in relation to the distances trekked for the past five years. During the last five years, livestock trekked relatively long distances to get water for three years because of the drought.

### 3.0 PRODUCTION INDICATORS

#### 3.1 Livestock Production

##### 3.1.1 Livestock Body Condition

Nearly 43 percent of the cattle are thin (with tissue cover, but ribs and spine were prominent) while 47 percent of them are moderate (good balance of fat and muscle). About 50 percent of sheep have poor muscle coverage, and backbone and ribs are visible. Livestock body condition continue to deteriorate due to depletion of pasture and deterioration of browse.

##### 3.1.2 Livestock Mortalities

There were no reports of livestock deaths related to drought in October this year.

##### 3.1.3 Livestock Diseases

Endemic livestock diseases mainly Food and Mouth Disease (FMD) and Contagious Caprine Pleuropneumonia (CCPP) still persists. In October, the county initiated a countywide vaccination campaign against the FMD.

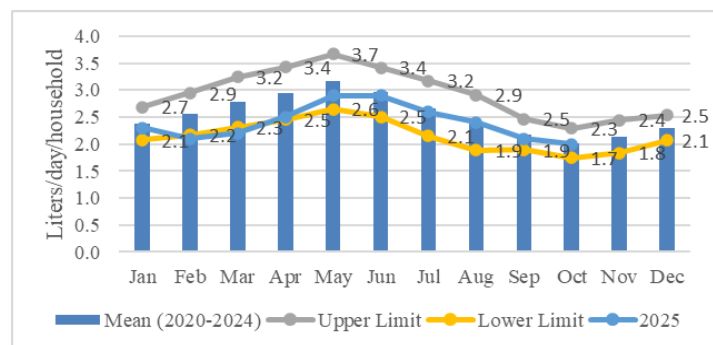
##### 3.1.4 Livestock Migration

Livestock continue to migrate both internally and externally since September. By October, about 50 percent of cattle from Kajiado South (Mbirikani, Lenkism, Rombo) had migrated to Chylu hills (Kajiado) and Makueni county in search of pasture.

##### 3.1.5 Milk Production

The average household's milk production continue to decline from 2.9 litres per day in June to 2.0 litres per day in October (Figure 4).

The decline would be attributed to the deteriorating livestock body condition during the dry spell that is characterized with long distances to water sources and low quality of forage. The current milk production is within the normal range when compared to the production for the previous five years. Three of these previous years namely 2021, 2022, and 2023 were drought years which means that milk production was low.



**Figure 4. Average daily milk production; Kajiado, 2020-2025**  
The decline would be attributed to the deteriorating livestock body condition during the dry spell that is characterized with long distances to water sources and low quality of forage. The current milk production is within the normal range when compared to the production for the previous five years. Three of these previous years namely 2021, 2022, and 2023 were drought years which means that milk production was low. The average daily household milk production in Rombo (Pastoral south) and Loodokilani wards (Pastoral west) was 1.1 litres each.

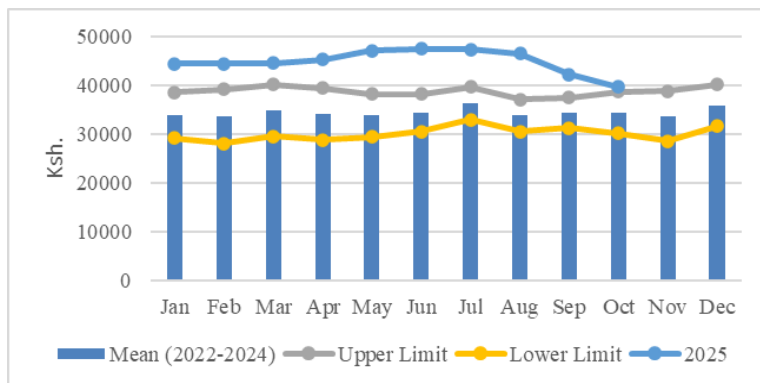
## 4.0 MARKET PERFORMANCE

### 4.1 Livestock Marketing

The main livestock markets in the County were in normal operations in October. These markets include Enkorika, Sajiloni, Mile 46, Isinya, Ibisil, Kimana, Ewuaso, Rombo, Shompole, and Kiserian.

#### 4.1.1 Cattle Prices

The average market price of cattle is on a steady decline from Ksh. 47,400 for a medium size



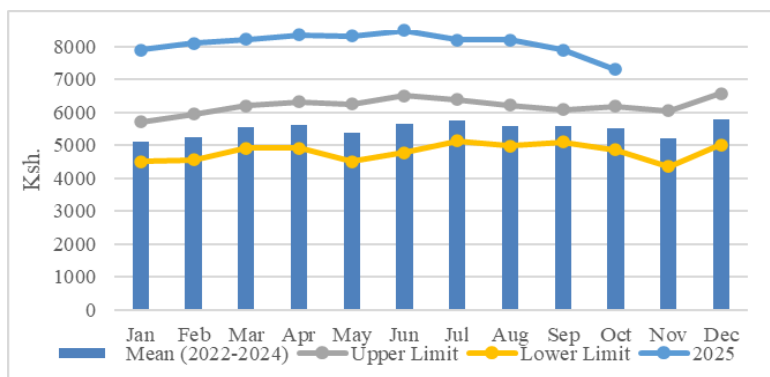
bull in July to Ksh. 39,700 in October. The normal average price for October based on the past three years is between Ksh. 30,100 and Ksh.38,700 (Figure 5). The decline in cattle prices correspond mainly with the deterioration of cattle body condition. In October, Shompole

**Figure 5. Average cattle prices; Kajiado, 2020-2025**

market in Magadi ward recorded the lowest average price of cattle of Ksh. 31,700.

#### 4.1.2 Goats Prices

The market price of a medium-size goat declined from Ksh. 8,500 in June to Ksh. 7,300 in



October. The normal average price for October based on the past three years is between Ksh. 4,900 and Ksh.6,200 (Figure 6). Unlike prices of cattle, the decline in goats' prices is probably due general economic hardships that may have reduced demand for

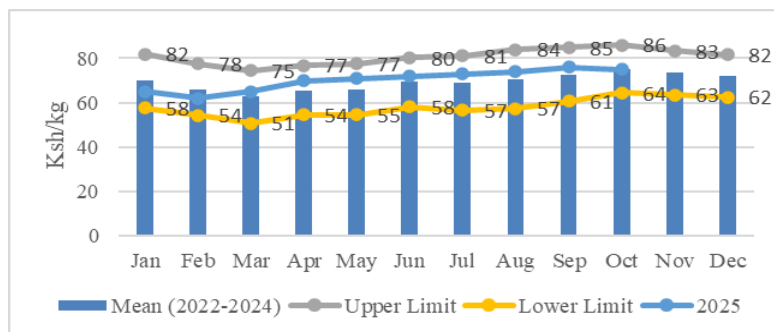
**Figure 6. Average goat prices; Kajiado, 2020-2025**

goats' meat. Rombo market in Kajiado south (Pastoral South) had the lowest average price of goat in October of Ksh. 5,000.

## 4.2 Prices of Cereals and Legumes

### 4.2.1 Maize Prices

Maize prices was stable and within the normal range between July and October at Ksh. 73 per



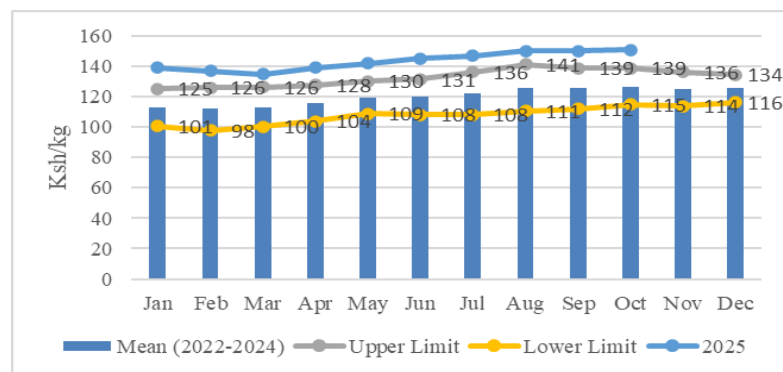
**Figure 7. Average price maize; Kajiado, 2022-2025**

kilogram and Ksh. 75 per kilogram respectively. The average price of maize in October for the last three years is Ksh.75 per kilogram (Figure 7). This stability was probably due to the availability of maize and other food stuffs in the markets during the said period. In Ewuaso market (in Ewuaso ward), maize was sold at Ksh. 120 per kilogram. Higher than average price of maize in this market was probably due to poor road network that increases the cost of transportation, in addition to the total reliance on markets. Ewuaso ward is purely Pastoral.

maize and other food stuffs in the markets during the said period. In Ewuaso market (in Ewuaso ward), maize was sold at Ksh. 120 per kilogram. Higher than average price of maize in this market was probably due to poor road network that increases the cost of transportation, in addition to the total reliance on markets. Ewuaso ward is purely Pastoral.

### 4.2.2 Beans Prices

The average price of a kilogram of beans was Ksh. 150 and Ksh. 151 in August and October



**Figure 8. Average price of beans; Kajiado, 2022-2025**

respectively. The average price of beans for October for the last three years is Ksh. 127 per kilogram (Figure 8). Beans prices have remained above the normal range based on the prices for the past three years. One of the factors contributing to high prices of food commodities including beans is the cost of production. Higher than average price of beans were observed in Ewuaso because of same reasons as for the maize.

respectively. The average price of beans for October for the last three years is Ksh. 127 per kilogram (Figure 8). Beans prices have remained above the normal range based on the prices for the past three years. One of the factors contributing to high prices of food commodities including beans is the cost of production. Higher than average price of beans were observed in Ewuaso because of same reasons as for the maize.

### 4.3 Milk Price

The average retail price of milk increase from Ksh. 66 per litre in June to Ksh. 81 per litre in

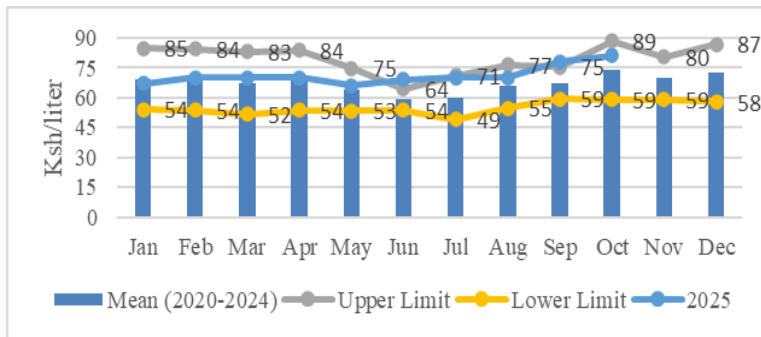


Figure 9. Average price of milk; Kajiado, 2022-2025

October. This increase corresponds to reduction in production. In the last five years, the price of milk in October averaged Ksh. 74 per litre (Figure 9). The variation of milk prices between livelihood zones was minimal.

### 4.4 Terms of Trade

The steady decline of terms of trade from 132 kilograms of maize for a medium size goat in

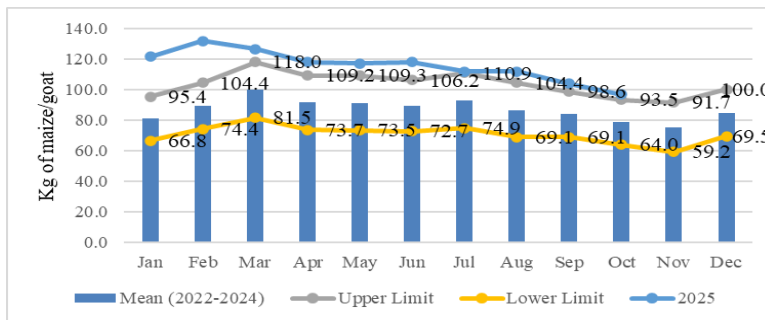


Figure 10. Terms of trade; Kajiado, 2022-2025

February to 97 kilograms of maize for a similar sized goat in October (Figure 10) signifies continuous reduction of households purchasing power. Basically, the prices of livestock has steadily decline while the prices of food

commodities have remained high. The average terms of trade in October for the past three year is 79 kilograms of maize for a medium-sized goat. Lower than average terms of trade were observed in Ewuaso. The variation would be attributed to high prices of food stuffs in this ward.

## 5.0 FOOD CONSUMPTION AND NUTRITION STATUS

### 5.1 Milk Consumption

On average, this year, households were consuming below the expected about of milk since

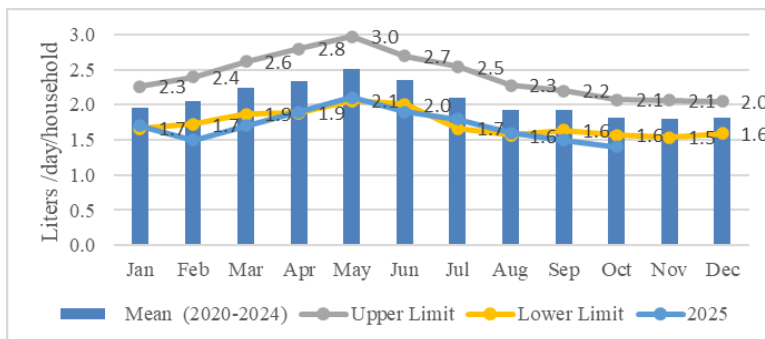


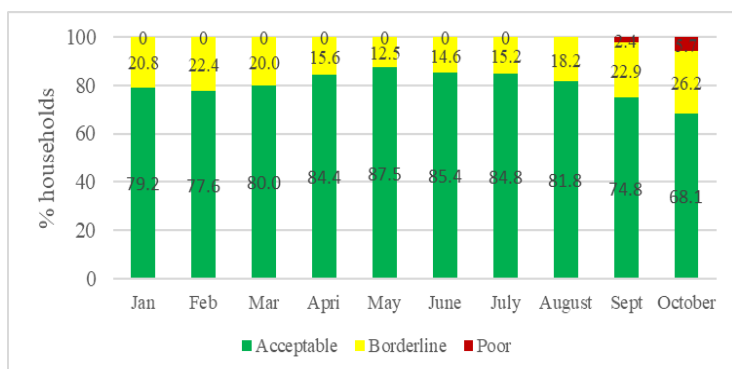
Figure 11. Household daily milk consumption; Kajiado, 2020-2025

September. In October, households were consuming, 1.4 litres per day. The long-term average household milk consumption in October is 1.8 litres per day (Figure 11). In addition to low milk production, households are also selling milk to

get money to cater for other household needs. Households' milk consumption varied among and within livelihood zones. For instance, the daily household milk production was 2.0 litres per household in Ewuaso (Pastoral) and in Kaputiei (Agro-Pastoral), and 1.0 litre in Illodokilani (Pastoral).

## 5.2 Food Consumption Score

The proportion of households in poor food consumption band and borderline band continue to



**Figure 12. % households in per food consumption band; Kajiado, Jan-Oct 2025**

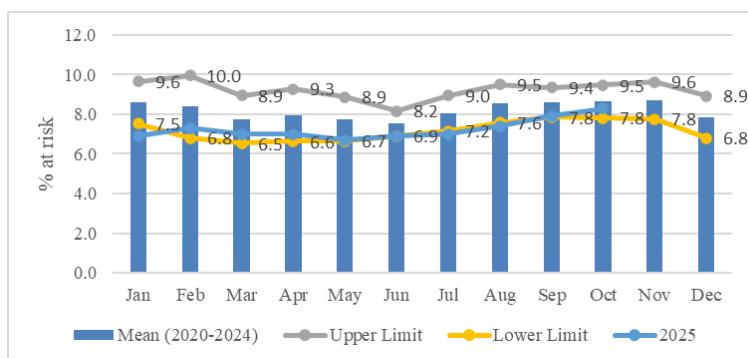
increase since July (Figure 12). This means that the number of food insecure households and those at risk of food insecurity continue to increase. This would be due to reduced milk consumption, declining terms of trade and high prices of food

stuffs. 13.3 percent and 10.0 percent of the households in Mbirikani (Pastoral South) and Ewuaso (Pastoral West) respectively are currently food insecure.

## 5.3 Health And Nutrition Status

### 5.3.1 Nutrition Status of Children Aged 6-59 Months

The proportion of under-fives who are at risk of malnutrition continue to increase from 6.9



**Figure 13. Average % of under-fives at risk of malnutrition; Kajiado, 2020-2025**

percent in June to 8.3 percent in October (Figure 13). Although the current proportion is within the normal range compared to the risk in the last five years, the increasing trend suggest increased household vulnerability to quality food. Hotspot areas include Mbirikani

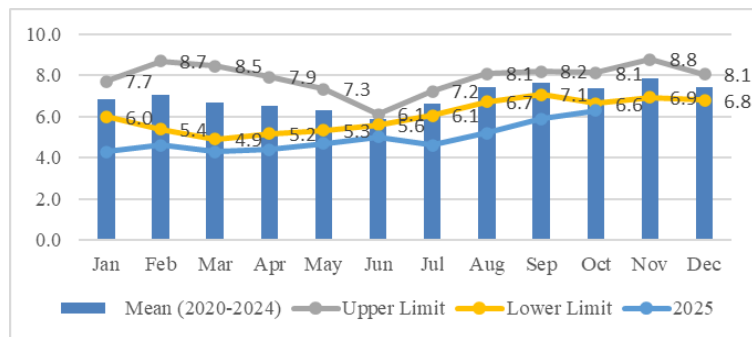
where 13.3 percent of the children were at risk of malnutrition.

### 5.3.2 Health

The county reported no incidence of human disease outbreaks during the month of October.

## 5.4 Coping Strategies

The coping strategy index continue to below the normal range that is based on the previous five years (Figure 14). However, the



**Figure 14. Coping strategy index; Kajiado, 2020-2025**

and 13.5 respectively. The average index for the past five years for the month is 7.4. Households were mainly and consuming fewer meals per day to deal with food shortage.

years (Figure 14). However, the continued increase of the index since July suggest continued strain for households to get food or money to buy food. In October, the coping strategy indices for Mbirikani and Rombo (Pastoral South) were 8.0

## 6.0 FOOD SECURITY PROGNOSIS

**Rainfall:** The county is experiencing depressed 2025 short rains that is characterized with late onset and poor spatial and temporal distribution. This was likely to result in poor regeneration of pasture and water inadequacy by January 2026.

**Livestock productivity:** Subsequent to poor forage and water inadequacy, livestock productivity including, their body condition, milk production and prices will probably deteriorate starting January 2026.

**Crop production:** Depressed rainfall would probably result in low crop yields or crop failure especially in Agro-pastoral zones.

**Markets:** Prices of food commodities would probably remain high for over the next eight months. Livestock prices may shoot down after December and consequently reduce the terms of trade. This will negatively affect the household's access to nutritious food.

**Food consumption:** The number of food insecure households was likely to increase continuously. In this case, the risk of malnutrition would subsequently increase.

**Coping strategies:** Households would continue using more stressful ways to get money to buy food. Some of them, such as charcoal production and sand harvesting, will affect the environment with long-term consequences.

**Risks:** Some of the risks to monitor include livestock diseases, crop pests and diseases, human-wildlife conflicts, diminishing rangelands due to invasion of ipomea and Mathenge species, and environmental degradation.

## **7.0 INTERVENTIONS**

### **7.1 Current Interventions**

#### **Ongoing Non-Food Interventions**

- Vaccination of livestock against FMD targeting 350,000 cattle across the county; By county government through the department of veterinary services with the funding from World Bank and GOK through NAVCDP.
- Capacity building of veterinary staff on participatory disease surveillance; By county government through the department of veterinary services with funding from FAO.
- Construction of 32,000 m<sup>3</sup> Enkutoto water pan targeting 11,000 people, 8,000 livestock and 2 primary schools; By National Drought Management Authority with funding from European Union through DCADR project.
- Supporting three (3) community farming initiatives targeting 80 households in Mili Tisa, Maparasha and Ipatimaru; By Feed the Children.
- Provision of corn soya bred flour to 43 primary schools in Matapato North and South wards; By Feed the Children.

### **7.2 Recommended Interventions**

- Carry out a quick livestock count/assessment; By county government and partners through the department of livestock production.
- Livestock disease surveillance and ring vaccinations in hot spot areas; By county government and partners through the department of veterinary services.
- Updating county response plan; by the National Drought Management Authority, County Government, and partners.
- Resource mobilization for response activities; by Multi-Agency team, partners and other stakeholders.
- Enhance nutrition surveillance in high-risk areas; By county government and partners through department of health and nutrition services.