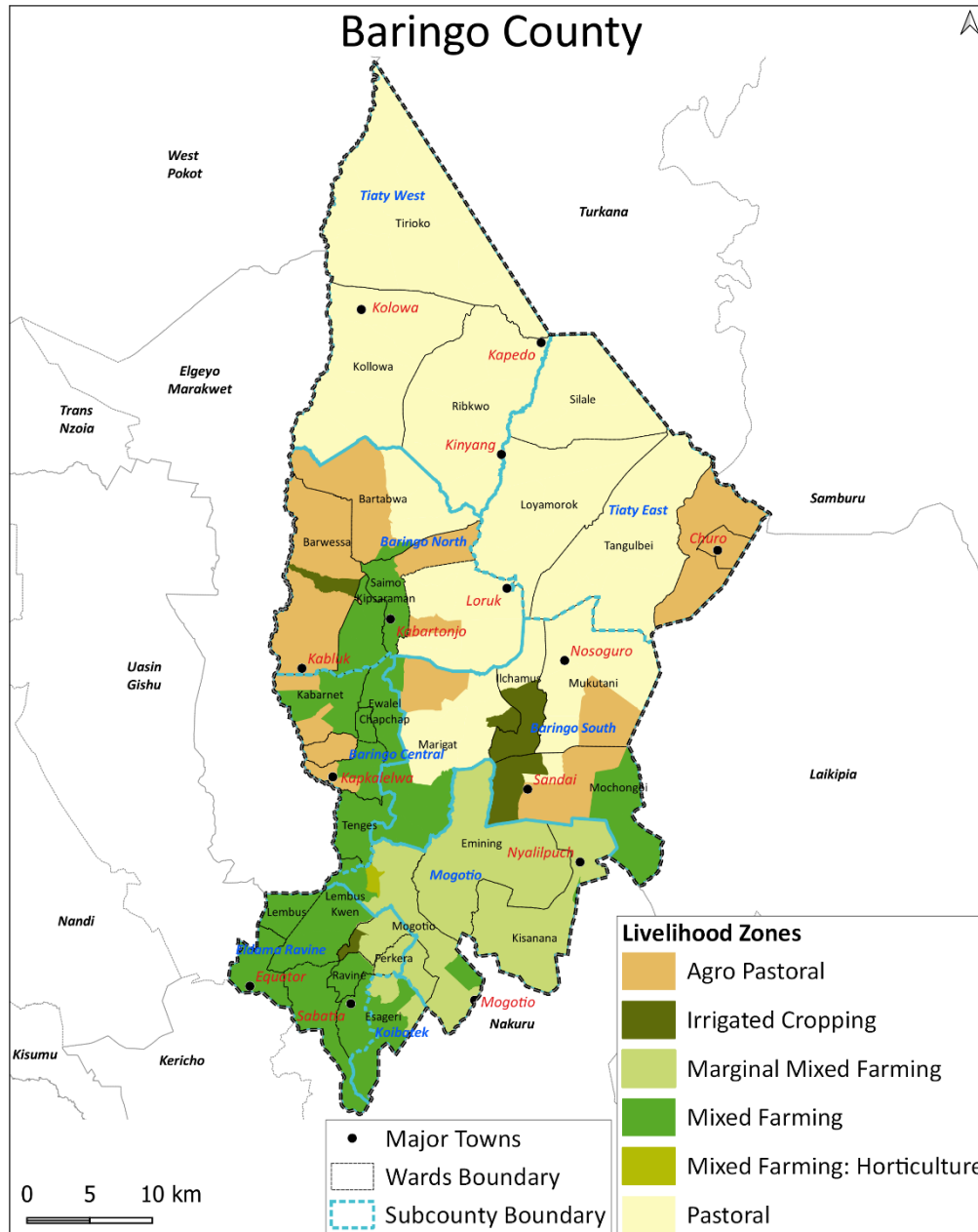


# BARINGO COUNTY 2023 SHORT RAINS FOOD AND NUTRITION SECURITY ASSESMENT



A joint report by the Kenya Food Security Steering Group (KFSSG) and Baringo County Steering Group (CSG), January 2024

## **EXECUTIVE SUMMARY**

The 2023 short rains assessment was conducted by the technical members of the Baringo county steering group (CSG) and supported by the Kenya Food Security Steering Group (KFSSG). The assessment was carried out in all the main livelihood zones. The main objective of the assessment was to develop an objective, evidence base and transparent food and nutrition security situation analysis following the onset of the short rains of 2023. Both qualitative and quantitative methods were used to carry out the situation analysis. The onset of the short rains season was observed in the first dekad of September which was earlier compared to normal with most parts of the county receiving 91-110 of the normal rains on average. Temporal distribution was good while spatial distribution was even during the first two months of the season. The season ceased early in the first dekad of December. Incidents of insecurity were reported in Baringo North and South sub counties which disrupted livelihood activities. Other shocks that were reported in the county were crop pests/diseases as well as livestock pests and diseases. Acreage put under both rain-fed and irrigated agriculture was above long term mean (LTA) while projected yield was expected to be above the LTA for nearly all the crops planted. Maize stocks at household level were at 88 percent of the LTA. Forage conditions were in good conditions across the livelihood zones apart from some pockets in Pastoral areas which were being affected by rainfall deficit and invasive species. Livestock body condition was good for all the livestock species across the livelihood zones while milk production and consumption were near normal and on improving trend. Milk prices were normal in Mixed farming livelihood zone but above LTA in other zones. Both livestock and cereal prices were above short-term average (STA) although the cereals were showing a gradual declining trend. Terms of trade were above LTA and on an improving trend. The main water sources were normal while the trekking distances were below LTA across the livelihood zones. Waiting time at water sources was normal while water consumption per person per day was above normal. The most common disease was upper respiratory tract infections (URTI) for both children and adults. The county had acceptable food consumption score although in the Pastoral zone, there was a significant number of households that had borderline and poor food consumption cores. About 83, 17 and zero percent of the sampled households were applying none coping, stressed and crisis food based coping strategies respectively while 83 and 17 percent of the sampled households applied none coping and stressed livelihood based coping strategies respectively. Tiaty East and West sub counties had the lowest latrine coverage at eight percent while hand washing practices were fairly fair across the livelihood zones. About 18 of the sampled children were at risk of malnutrition which was within the seasonal range. In comparison to the previous term, there was a positive change in enrolment of learners across all levels of education in term one of 2024. Most of the ECDE and primary schools had access to school feeding program apart from Eldama Ravine and Baringo Central sub counties.

The overall IPC phase classification for the county is at phase two (Stressed) whereby the Pastoral and Agro-pastoral livelihood zones were in phase two while Irrigated cropping and Mixed farming livelihood zones were in phase one (None/Minimal).

## TABLE OF CONTENT

<b>EXECUTIVE SUMMARY .....</b>	<b>ii</b>
<b>1.0 INTRODUCTION.....</b>	<b>1</b>
1.1 County background .....	1
1.2 Objectives of the assessment.....	1
1.3 Methodology and approach.....	1
<b>2.0 DRIVERS OF FOOD AND NUTRITION SECURITY .....</b>	<b>3</b>
2.1 Rainfall performance.....	3
2.2 Insecurity/Conflict.....	3
2.3 Other shocks and hazards.....	4
<b>3.0 IMPACTS OF DRIVERS ON FOOD AND NUTRITION SECURITY.....</b>	<b>5</b>
3.1 Availability.....	5
3.1.1 Crop production.....	5
3.1.2 Cereal stocks .....	6
3.1.3 Livestock production .....	7
3.2 Market operations.....	15
3.2.1 Market prices .....	15
3.2.3 Income sources .....	17
3.2.4 Water access and availability .....	17
3.2.5 Food consumption .....	19
3.2.6 Coping strategy.....	19
3.3.3 Nutrition status .....	21
3.3.4 Sanitation and Hygiene.....	23
Sanitation and Hygiene.....	23
3.4 Food security trends .....	25
3.5.1 Enrolment .....	26
3.5.2 Food availability in schools during the season.....	26
3.5.3 Water availability in schools during the season .....	27
3.5.3 Effect of the season on school infrastructure.....	27
3.5.4 Inter sector links .....	27
3.6 Child protection.....	28
<b>4.0 FOOD SECURITY PROGNOSIS.....</b>	<b>29</b>
4.1 Prognosis assumptions .....	29
4.2 Food security outlook for the next six months.....	29
<b>5.0 CONCLUSIONS AND RECCOMENDATIONS .....</b>	<b>31</b>
5.1 Conclusions .....	31
5.1.1 Phase classification.....	31
5.1.2 Summary of findings .....	31
5.1.3 Sub County ranking.....	31
5.2 Ongoing interventions .....	32
5.2.1 Food interventions .....	32
5.2.2 None food interventions .....	33
5.3. Recommended interventions .....	37
5.3.1 Food interventions .....	37
5.3.2 None food interventions .....	39

## 1.0 INTRODUCTION

### 1.1 County background

Baringo County shares borders with Turkana and Samburu Counties to the north, Laikipia to the east, Nakuru and Kericho to the south, Uasin Gishu to the southwest, and Elgeyo - Marakwet and West Pokot to the west. The county spans approximately 11,015 square kilometers (Km<sup>2</sup>) and has a projected population for 2024 as

749,000 persons according to the Kenya National Bureau of Statistics (KNBS). The county is divided into six (6) sub-counties namely: Baringo North, Baringo Central, Baringo South, Mogotio, Tiaty and Eldama Ravine. There are five main livelihood zones in the county which include Mixed farming, Pastoral, Agro-pastoral, Marginal mixed and Irrigated cropping (Figure 1). The main hazards that do affect the county occasionally are drought, floods, conflict/insecurity, crop pests and diseases as well as livestock diseases.

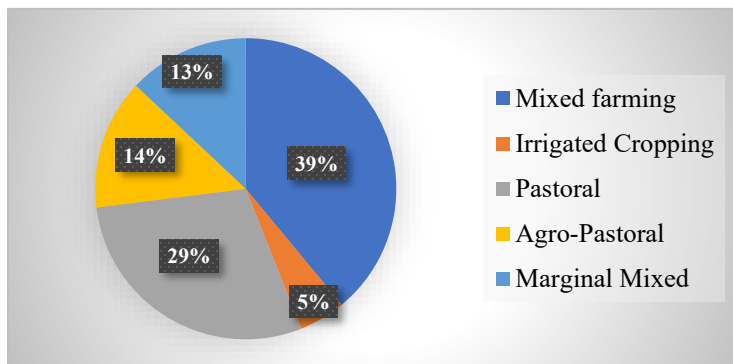


Figure 1: Population by livelihood zones

### 1.2 Objectives of the assessment

The main objective of the 2023 short rains food security assessment (SRA) was to conduct an evidence-based and transparent food security situation analysis following the performance of the 2023 short rains season in Baringo county, considering the cumulative effect of previous seasons, and to provide recommendations for possible response options based on the situation analysis. Specifically, the assessment aimed at ascertaining the quantity and quality of the 2023 short rains and assess the impact of the season on food security situation, obtain adequate and reliable information for projecting food security needs, assess the geographical spread of other hazards, and determine the impact of the shock on livelihoods, assess the impact on livelihoods including crop and livestock production, markets, water, nutritional status and socio-economic conditions. The assessment also aimed at taking stock of the available response activities addressing food insecurity and malnutrition and to establish required non-food intervention, with particular emphasis on programs that promote preparedness and build household resilience. It also assessed potential food needs, including options for appropriate transfer modalities such as food for assets, cash and vouchers, safety nets and general food distribution.

### 1.3 Methodology and approach

The 2023 Short Rains Assessment exercise was conducted by a multi sectoral and multi-agency team comprising members of the County Steering Group (CSG). This team included technical experts from various departments such as agriculture, livestock, water, education and health and nutrition as well as development partners operating at the county level. The assessment was conducted from 29<sup>th</sup> January to 7<sup>th</sup> February 2024. The process began with the administration of sector-specific checklists, followed by the initial CSG meeting where the aims and objectives of

the assessment were outlined. This was then followed by sector presentations and later a review of the sector checklists. Subsequently, technical teams proceeded to the field for a fact-finding mission, and selected representative sites based on livelihood zones. The aim was to triangulate the information gathered in the checklists with the actual situation on the ground. The process involved an in-depth analysis of primary data collected through Key Informant Interviews (KII), semi-structured community Focus Group Discussions (FGDs) comprising both gender, market surveys, and sectoral checklists. Transect drives were conducted, employing visual inspection techniques with observations noted. Secondary data was collected through the checklists which were administered to the relevant departments for collection of quantitative data and gave sectoral briefs during the county steering group. Other data that was available to assist in the analysis included livelihood zone data, satellite data for rainfall, routine Demographic Health Information Systems (DHIS) data, National Drought Management Authority bulletins and SMART survey report among others. Data collected was analyzed at the sub-county and livelihood zone levels and sectoral county reports prepared. Further analysis was done using the Integrated Food Security Phase Classification (IPC) reference tools. The team compiled and drafted a report, with preliminary findings presented to the CSG for adoption and ownership.

## 2.0 DRIVERS OF FOOD AND NUTRITION SECURITY

### 2.1 Rainfall performance

The onset of the short rains season occurred early in the highlands of the county, with the rainfall picking up from September (Figure 2). Conversely, in other parts of the county, particularly in the lowlands, the onset was normal and occurred in the third dekad of October. Throughout the review period, the county received an average rainfall amount of 194mm from October to December, which was 110 percent of the long-term average. Most parts in the county received on average 91-110 percent of the normal rains with parts of Eldama Ravine sub county receiving more than 110 percent of their normal rains (Figure 3). In terms of temporal distribution, it was good in the months of October and November but poor in December. Spatial distribution was even in the first two months of the season but poor in December. The cessation of rainfall was not within the normal period, occurring in early December 2023. Notably, off-season rains were observed mostly during the second dekad of January 2024.

### 2.2 Insecurity/Conflict

During the assessment period, insecurity incidents, including banditry attacks, were reported in

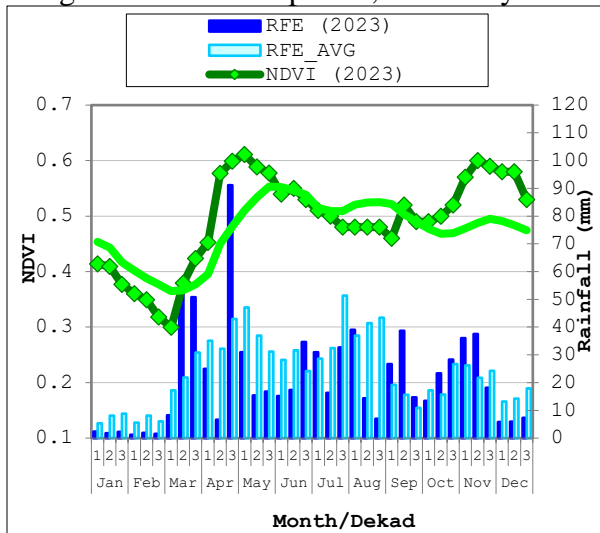


Figure 2: Temporal distribution

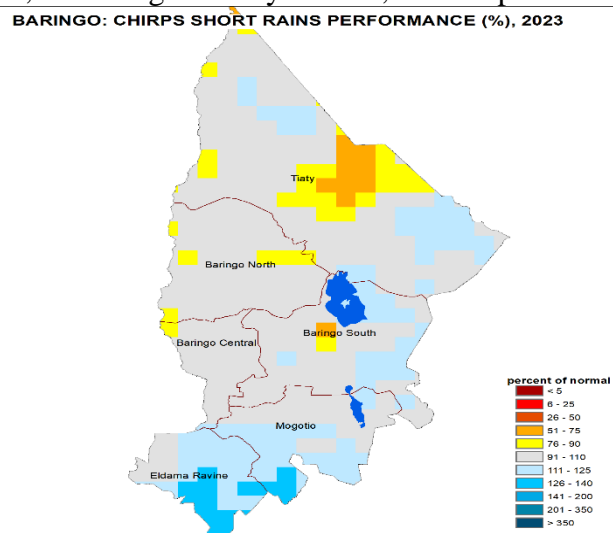


Figure 3: Rainfall amount and spatial distribution

Baringo North Sub County, which was the most affected area. According to the Multi-Agency assessment report on the impact of insecurity in Baringo North Sub County conducted in January 2024, these incidents have adversely affected various social dimensions and key sectors including health, education, shelter, agriculture/livestock among others. In January 2024, border points between Baringo North and Tiaty West sub-counties were characterized by unrest and tension following incidents of heavily armed bandits conducting cattle raids or attempted raids during the second week of the month. These attacks occurred in several pockets of Baringo North Sub County, particularly in Tuluk, Yatya, and Loruk sub locations. Tensions remain high as suspected bandits continue to roam in adjacent areas, causing disturbances and attempted raids, especially in parts of Yatya, Kosile, and Namba in Saimo Soi Ward, leading to continuous displacements due to fear of further attacks.

The increased incidents of rampant insecurity occurrences in various sub locations in Baringo North Sub County have resulted in significant disturbances, including loss of lives, destructions

and loss of property, closure of some Early Childhood Development (ECD) schools, disturbance among learners reporting to schools, restricted movements among residents due to tensions in hot spot areas, leading to displacements of communities and loss of seven **lives** in less than three weeks.

Approximately 542 households (HHs) (234 males, 308 females) have been displaced and/or affected in various ways, with the hardest hit population being the vulnerable segment of the **society**. Access to health facilities in Yatia, Loruk and Sibilo dispensaries was affected due to shortage of essential supplies and patients opting not to visit them due to tensions. Displaced families have reported cases of diarrhea due to current poor hygiene, high cases of acute respiratory infections, malaria upsurge signs and symptoms which has been confirmed through suspected cases in Sibilo dispensary due to lack of mosquito nets especially to the vulnerable segment. The affected households are currently depending on relatives, well-wishers and on families in their new settlements for food. A number of granaries with cereals have been destroyed/abandoned and stolen. Most households reported hundreds of their livestock heard, the sole source of milk for most families, had been taken. The purchasing power of displaced communities is compromised as their livelihood sources are disrupted and abandoned and hence not able to sufficiently obtain food in hosted areas. Similarly, pressure is exerted on the limited food available in most areas due to the sudden influx of people and this is being reported as a burden. The assessment revealed a dejected state where some of the affected populations are unable to access clean safe water for drinking and domestic use. Initially, the affected population depend on ground and surface water sources including boreholes, streams but now displaced and scattered in far hard to reach areas which constrain few water sources especially in parts of Bartabwa, Saimo Soi ward hence limiting access to safe clean water and increasing the distance of travel. Kipchemoi Borehole is the only safe water point for the entire displaced community, which is not sufficient. Market centers such as Yatia, Chemoe, Ng'aratuko shopping centers, Kosile, and Ng'aratuko remained closed and deserted due to the insecurity situation. The education sector has also been affected, with low school enrolment noted in various schools in hotspot areas, impacting both learners and teachers. Low school enrolment was noted in Kosile primary, Yatia Primary, Chemoe primary boarding school, Ng'aratuko primary, Kagir primary and Yatia secondary school.

## **2.3 Other shocks and hazards**

### **Hazards**

#### **Crop pests**

Crop pests and diseases posed a threat to crop production in Baringo County, particularly in Eldama Ravine and Baringo Central sub-counties. Approximately 5-10 percent of the total acreage under maize production was affected by fall armyworms and Maize Lethal Necrosis Disease (MLND), resulting in decreased maize yields in these areas.

#### **Livestock diseases**

Livestock diseases also emerged as a concern within the county. Various outbreaks were reported, with notable diseases including Lumpy Skin Disease (LSD) affecting cattle, Blue Tongue Disease affecting sheep, and *Peste des Petits Ruminants* (PPR) mainly affecting goats. The impact of these diseases was mostly felt in Baringo South and Baringo North sub-counties, where livestock productivity was hampered such as decreased milk production.

### 3.0 IMPACTS OF DRIVERS ON FOOD AND NUTRITION SECURITY

#### 3.1 Availability

##### 3.1.1 Crop production

###### Introduction

The short rains in Baringo County play a crucial role in ensuring food and nutrition security, as they complement the gains made from the long rains season and help in recharging of water sources for irrigation. During the season under review, the County received enhanced rains, which contributed positively to crop production in various parts of the county. Additionally, the main rivers that farmers depend on for irrigation were well recharged. All the livelihood zones within the County experienced wet spells in the months of October and November apart from small pockets in Emining, Silale and Loyamorock wards. Moderate temperatures were also reported, causing crops planted to thrive well. The harvest that was realized from this season did contribute to increased food stocks that had been carried over from the previous season. This led to a marginal decline of food prices particularly cereals, with a kilogram of maize selling between Kshs 50-80. The rains did lead to enhanced water availability in pans and rivers which were used for irrigation hence causing an expansion in acreage of land under irrigated agriculture. Stakeholders did carry out key messaging with regards to October-November-December rains (OND) forecast which made farmers increase acreage for crop production in anticipation of El Nino rains. The maize crop in the fields was affected by fall armyworm and maize lethal necrosis disease (MLND), affecting 5-10 percent of acreage under maize crop hence affecting the overall yield.

###### Rain fed agriculture

Although the county received enhanced rains during the season in terms of total amount received, the distribution in time was poor particularly during the month of December. Those farmers who planted late were caught up with dry spells in December causing moisture stress to some crops. The main crops planted during the season under review were maize, beans, cow peas and green grams. The area planted with maize was 32 percent higher than the LTA, and this could be attributed to farmers heeding to weather advisories that were issued by various stakeholders with regards to the OND forecast, a scenario that even made some farmers in low land areas to undertake maize planting which was not usual at this time of the year. The production for pulses which include beans, green grams and cowpeas increased by 300 percent, 400 percent and 4000 percent respectively compared to the LTA. The expected production for maize would have been much higher were it not due to the impacts of fall armyworms and MNLD disease that affected about 5-10 percent of the total acreage put under maize production. The production of beans and cowpeas was expected to increase by 30 percent and 20 percent respectively and this was attributed to good distribution of the rains during the first two months.

Table 1: Rain fed agriculture

Crop	Area planted during 2023 Short rains season (Ha)	Long-term average (5 year) area planted during the short rains season (Ha)	2023 short rains season production (90 kg bags) Projected	Long term average production (5 year) during the short rains season (90 kg bags)
Maize	421	318	10,525	7,950
Beans	3,568	915	42,816	13,725
Green grams	1240	280	9,920	1,680
Cow peace	1480	35	11840	142

### Irrigated crop production

The area planted for all crops during the 2023 short rains season was higher than the LTA except for green grams which was slightly lower than LTA and the expected production was expected to be higher than the LTA for all the crops planted (Table 2). This was attributed to the enhanced rains received during the season which led to increased recharge of irrigation water sources such as rivers. The area planted for beans and maize during the season was 85 percent and 1000 percent more than the short-term average (STA) respectively. Production for beans and maize during the season under review was projected to be 115 percent and 85 percent of the STA respectively. For tomatoes, the area planted during the season was over 500 percent of the STA while its production was expected to be 95 percent due to availability of irrigation water. For watermelon, the area planted during the season was 400 percent of the STA and the production was estimated to be 98 percent of the STA due to the increased water levels in the rivers but pests and diseases were affecting the crop, hence the expected yield may drop slightly. For green grams, the area planted during the season was almost normal and this was because most of the farmers planted the crop as a second crop for crop rotation but still the production was expected to be 120 percent higher than STA.

**Table 2: Irrigated agriculture**

Crop	Area planted during the 2023 short rains season (ha)	Short-term average (3 years) area planted during short rains season (ha)	2023 short rains season production (90 kg bags/MT) Projected	Short-term average production (3 years) during short rains season (90 kg bags/MT)
Beans	300	162	4500	2025
Tomatoes	650	127	12,000	1,905
Water Melon	408	90	6,120	1,350
Green Grams	168	172	1,008	1,032
Maize	550	45	16,500	1350

### 3.1.2 Cereal stocks

There were various cereal stocks held by different entities in the county during the season under review (Table 3) and these included households, traders, millers, food assistance, and the National Cereal and Produce Board (NCPB). The data also provides the current stocks and the stocks held in the long-term average (LTA) for comparison. The variation in stocks held at each level was due to a combination of factors including changes in demand, supply, prices among other reasons.

**Table 3: Cereal stocks**

Commodity	Maize (Bags)		Rice (Kgs)		Sorghum (Bags)		Green gram (Bags)	
	Current	LTA	Current	LTA	Current	LTA	Current	LTA
Households	528,409	601,180	0	0	2,163	2,322	1,028	334
Traders	84,440	72,421	284	12,000	1,352	496	205	268
Millers	18,300	12,904	0	0	0	0	0	0
Food Assistance		650	0	8,000	0	0	0	0
NCPB	811 (50kg)	0	1,100	280	0	0	0	0
Total	631,149	687,155	1,384	20,280	3,515	2,818	1,233	602

## Households

The stocks of maize held by households were 528,409 bags, which was 13 percent lower than the LTA. However, households did not have any stocks of rice as the crop was not planted in the irrigation schemes while the stocks for sorghum and green grams were slightly different from LTA. The reduction in maize stocks was attributed to the fact that farmers were selling them for school related expenses such as school fees. The stocks held by households were skewed in favor of Eldama Ravine sub county accounting for 60 percent of the total stocks held by households.

## Traders

The stocks for maize held by traders were 84,440 bags, which was 16 percent higher than the LTA. Traders also had 284 kgs of rice which was 4000 percent below LTA and then 2,163 bags of sorghum which was seven percent lower than the LTA. They also had 1,028 bags of green gram which was over 200 percent high than the LTA. The traders were holding more stocks of maize due to anticipation of higher demand in the market and also to take advantage of higher prices.

## Millers

The stocks of maize held by millers was 18,300 bags, which was 41 percent higher than the LTA of 12,904 bags. However, millers did not have any stock for rice, sorghum and green grams.

## NCPB:

The National Cereal and Produce Board (NCPB) had 811 bags of 50kg bags for maize but had no stock of sorghum and green grams and this could have been attributed to the unwillingness of farmers to sale maize to NCPB.

### 3.1.3 Livestock production

#### Introduction

The main livestock species in Baringo County include; cattle, goats, sheep, hived honeybees, poultry and camels. While the county relies heavily on the long rains for livestock production, the short rains play a crucial role in supplementing fodder and pasture production, as well as recharging water sources. Agricultural by-products, namely, maize stalks, maize cobs, sorghum, millet straw and the legume by-products are important as conserved feeds for future use. These by-products are important for utilization during dry periods and hence supplement strategic feed reserves in the semi-arid lands (ASAL) wards of the county. The table below (Table 4) presents the significance of livestock contribution to food and income.

**Table 4: Contribution of livestock to food and income**

Livelihood zone	% contribution	
	Food	Income
Mixed farming	25	30
Irrigated cropping	35	15
Agro-pastoral	50	50
Pastoral	70	85

Livestock play a crucial role in both Agro-pastoral and Pastoral livelihood zones, serving as a cornerstone of livelihoods in these communities. In Agro-pastoral zone, they equally support food security and income generation, with livestock contributing to 50 percent of food and 50 percent of income. This dual importance underscores their role as a vital source of sustenance and a key asset for generating income. Similarly, in Pastoral zones, livestock make the highest contribution to both food and income generation compared to other livelihood zones, accounting for 70 percent and 85 percent respectively.

### Pasture and browse situation

Overall, pasture and browse conditions across all livelihood zones ranged from fair to good, and was influenced by factors such as insecurity, the presence of invasive species, and livestock diseases which affect access and availability. The forages in the Mixed farming and Irrigated cropping livelihood zones enjoyed relatively good conditions, and were expected to last for three months without any limiting factors. Conversely, the Agro-pastoral and Pastoral livelihood zones experienced fair conditions, and were expected to last for a shorter duration of two months (Table 5). The forage conditions were largely attributed to the favorable OND rains and showers that were experienced in January 2024. Currently, there were no factors affecting access to pasture and browse in the Mixed farming and Irrigated cropping livelihood zones. Several factors affected access to forage, including resource-based conflicts in Baringo North, Tiaty, and Baringo South sub-counties, outbreaks of livestock diseases such as Peste des Petits Ruminants (PPR), Lumpy Skin Disease (LSD), Foot-and-Mouth Disease (FMD), and the presence of invasive plants. The invasive plants observed were such as *Opuntia ficus-indica*, *Dodonaea fiscosa*, *Prosopis juliflora*, *Acacia reficiens*, and *Panthenium hysterophorus*, which posed challenges to pasture regeneration, particularly in Tiaty East, Tiaty West, and parts of Baringo South sub-counties. To mitigate their effects, farmers were encouraged to utilize prosopis pods in livestock feed formulations and charcoal production, thereby reducing the spread of invasive trees.

**Table 5: Forage conditions**

Livelihood zone	Pasture					Browse				
	Condition		How long to last (Months)		Factors Limiting access	Condition		How long to last (Months)		Factors Limiting access
	Current	Normal	Current	Normal		Current	Normal	Current	Normal	
Pastoral	Fair	Good	2	3	Conflict, invasive species, livestock diseases	Good	Good	3	3	Conflict, invasive species, livestock diseases
Agro - Pastoral	Fair	Good	2	3	Insecurity, invasive species, livestock diseases	Good	Good	3	3	Insecurity, invasive species, livestock diseases
Irrigated zone	Good	Good	3	3		Good	Good	3	3	None

Mixed farming	Good	Good	3	3		Good	Good	3	3	None
---------------	------	------	---	---	--	------	------	---	---	------

### Livestock feed conservation status

Over 60 percent of the livestock farmers have embraced pasture production and conservation especially in the Agro-pastoral and Mixed farming livelihood zones whereby with good management, harvesting can be done twice a year. Pasture harvesting started in August for the first harvest and December for the second harvest and extended to January. Silage making started from mid-July and continued all through to September whereby there was a peak season in the Mixed farming livelihood zone. Farmers who planted forage maize and sorghums were currently harvesting for ensiling. The main institutions include BAMSCOS, Farmer cooperative societies, Koibatek ATC, farmer groups, large scale farmers and the small holder farmers. Additionally, Agro dealers were keeping hay stocks and bagged silage, hence facilitating easy access by farmers.

The percentage utilization of conserved pasture was three percent in the Agro-pastoral zone, two percent in the Mixed farming zone, and one percent in the Irrigated farming zone. Currently, boma rhodes and cenchrus ciliaris hay were available at Kshs 250-270 per bale. During the dry season, wheat, rice straws, and conserved crop residues are the hay available. In the month of February to April last year a bale of wheat straws was retailing at Kshs 380-400. The main factor limiting the utilization of conserved pasture was quality of the pasture. There were limited harvesting and baling machines leading to delayed harvesting. Currently, BAMSCOS in Eldama Ravine sub-county and RAE in Baringo South were the main players involved in pasture and seed production through land leasing.

Serious farmer groups were actively participating in commercial hay and seed production within the county. Following harvesting, the pasture was stored and distributed to community members and cooperative societies at subsidized prices. Moreover, last year, three cooperative societies, namely Mumberes, Sabatia, and Kiplombe FCS, produced maize for silage making, amassing approximately 600 tons of silage. This stock is currently available for sale to farmers at an average price of Kshs 10-12 per kilogram. Agro dealers such as Sokee, Hilltop Feeds, Chefkof, Kilimo, and Ukulima also stock hay, although their prices were subject to prevailing market rates.

During the period from December to February, crop residues serve as the primary source of feed, especially for farmers practicing free grazing. Given the limited availability of feed for grazing, crop residues function as supplementary feeds. Their value can be enhanced through chopping and treatment with additives like molasses. The following table (Table 6) gives a summary of hay status in the county during the season under review.

**Table 6: Livestock feed conservation status**

Sub County	No. of Hay Stores	Storage Capacity (Total number of bales)	No. of Bales currently being held	How long is expected to last (months)	Sub County demand	Average Weight per bale (in Kgs)	Average price per bale (Kshs.)	remarks
Eldama ravine	50	900,000	750,000	3	1,000,000	12-15	250	90% by farmers, 10% by Cooperative

								societies and Self-Help groups
Baringo South	10	100,000	20,000	2	250,000	12-15	250	80% by farmers, 20% by farmer groups
Baringo Central		20,000	3000	1	200,000	12-15	250	80% by farmers, 20% by farmer groups
Baringo North	14	150,000 bales	2,000	1	350	12-15	300	80% by farmers, 20% by farmer groups
Tiaty East and West	0	0	0	0	2.5M	-	-	No baling of hay

### Livestock body condition

There was a notable improvement in livestock body condition across all livelihood zones, attributed to the favorable performance of OND rains, except in isolated areas such as Kamar location in Mogotio sub-county (Table 7). There was a reduction in trekking distances to livestock watering points and pasture fields hence improving the animals body conditions. The body condition for all the livestock species was expected to remain good for the next three months due to the availability of good pasture and browse.

**Table 7: Livestock body condition**

Livelihood zone	Cattle		Sheep		Goat		Camel	
	Current	Normal	Current	Normal	Current	Normal	Normal	Current
Mixed farming	BCS4	BCS3	BCS4	BCS3	BCS4	BCS4	BCS3	BCS4
Irrigated cropping	BCS4	BCS3	BCS4	BCS3	BCS4	BCS4	BCS3	BCS4
Agro-pastoral	BCS4	BCS3	BCS4	BCS3	BCS4	BCS4	BCS3	BCS4
Pastoral	BCS4	BCS3	BCS4	BCS3	BCS4	BCS4	BCS3	BCS4

Note: BCS – Livestock Body Condition Score  
BCS 1 – Very Poor (Emaciated)    BCS 2 – Poor    BCS 3 – Fair    BCS 4 – Good    BCS 5- Very Good

### Tropical livestock unit (TLU)

The table below (Table 8) illustrates the distribution of Tropical Livestock Units (TLUs) across different livelihood zones and income levels. TLU serves as a standardized measure of livestock ownership, facilitating comparisons across diverse livestock species and hence providing valuable insights into livestock ownership patterns and their economic implications across and within different livelihood zones and income levels.

**Table 8: TLU**

Livelihood zone	Poor income households		Medium income households	
	Current	Normal	Current	Normal
Mixed Farming	2.45	3	5.8	5.5
Irrigated cropping	2.86	3.5	6.2	6.5
Agro-pastoral	3.87	5	7.5	7
Pastoral	4.35	6	9.3	7
<b>Average</b>	<b>3.68</b>	<b>4.5</b>	<b>7.2</b>	<b>9</b>

There was no significant variation on the TLU units for Mixed farming livelihood zone for the poor income households while in the Irrigated cropping, Agro-pastoral and Pastoral livelihood zones, there was a significant decrease in TLUs. The poor income households did experience a lot of livestock loses in the previous drought spells thus they are yet to recover their usual herd sizes. Other households have especially in the Agro-pastoral areas are opting to keep fewer animals but of superior breeds such as sahiwals thus contributing to reduction in TLUs.

### **Milk Production and consumption**

The table below (Table 9) presents data on average milk production and consumption per household per day, along with the corresponding prices per liter in different livelihood zones. Additionally, it compares the current values to the Long-Term Average (LTA) for reference. Milk production was higher than LTA, mainly due to the favorable rains experienced from October 2023 to January 2024, which improved feed availability across all livelihoods.

Milk consumption per household per day has remained more/less the same as compared to the LTA because most of the farmers preferred to sell their milk in order to buy other household goods. This was also attributed to the good milk prices prevailing in the markets.

The production, consumption and prices are predicted to remain the same for the next 3 months in Mixed and Agro-pastoral livelihood zones but may reduce in the Pastoral livelihood zone as pastures are likely to get poorer in the next two months as well as increased trekking distances to watering points.

**Table 9: Milk production, consumption and prices**

Livelihood zone	Average milk Production (Litres)/Household/day		Average milk consumption (Litres) per Household/day		Prices (Kshs)/Litre	
	Current	LTA	Current	LTA	Current	LTA
Agro-pastoral	1.2	1.4	1.1	1	60	60
Mixed farming	6	5	2	2	50	50
Irrigated	1.9	1.5	1.3	1	70	50
Pastoral	3.3	1.5	2.3	2	80	60

## Livestock Migration

During the review period, livestock migration patterns were observed to be normal, driven by factors such as pasture depletion, water scarcity, and insecurity tensions, particularly in Pastoral areas. Pastoral communities, facing poor or depleted pasture conditions, were observed migrating from Laikipia Nature Conservancy towards Lake Baringo and Arabal, while others from Tiaty areas moved towards Saimo Soi ward in Baringo North Sub County. These migrations led to reported insecurity tensions in Loruk, Kalabata, and Kinyach sub-locations. The migrations triggered by the search for pastures or insecurity necessitated the deployment of local conflict resolution mechanisms by relevant authorities to prevent escalations.

Various migratory routes identified include Barketiew-Kerio Valley, Barwessa, Sibilo, Lake Baringo, Solai-Laikipia-Kiptoim-Esageri-Koibatek forest, Mukutani-Rugus, along Lake Baringo shores, Sandai-Chebinyiny-Upper Mochongoi, Loboim-Emsos, Sandai-Kapkuikui, Loboim to Wildlife Conservancies, Churo-Laikipia Ranches, Churo-Tangulbei-Lake Baringo area, Kolloa/Tirioko-West Pokot-Uganda/Turkana/Lupeiton/Lokorin, Silale-Malaso-Turkana border, Kasarani, and Tangulbei-Laikipia/Mochongoi/Beyond Malaso (Moruakirin/Marti).

**Projected migration:** In the coming month, an increase in outward migration towards the Kerio Valley, West Pokot, Turkana, and around Lake Baringo is anticipated. Additionally, internal migrations are expected to intensify, with particular attention to areas such as Saimo Soi, Lake Baringo areas, and Arabal.

## Livestock diseases and mortalities

During the assessment period, the endemic diseases prevalent in Baringo County include contagious caprine pleuropneumonia (CCPP), *pestes des petits ruminants* (PPR), mange, sheep and goat pox, enterotoxemia, and helminthiasis. The enterotoxemia and Helminthiasis diseases were observed to have a presence across all livelihood zones. These diseases pose ongoing challenges, particularly in Pastoral and Agro-pastoral areas, affecting livestock health and productivity across the county.

Meanwhile, specific disease outbreaks were observed in various sub-counties. Sheep and goat pox outbreaks were reported in lower Mochongoi locations of Kapkuikui and Sandai, as well as in Kimondis and Sabor in Baringo South, and Barwessa and Ossen in Baringo North and Tiaty East and West. Additionally, blue tongue disease affected Ilchamus and Mukutani Wards, mainly impacting sheep populations in Agro-pastoral areas. These outbreaks resulted in mortalities, leading to losses in both income and food security for affected households. Efforts to control the outbreaks included targeted vaccinations, with 1,500 doses administered for Enterotoxemia and 1,000 doses for blue tongue disease. Mortality rate remained below one percent across all zones as shown by table 10.

**Table 10: Livestock mortalities**

County	Livestock species	Total Sub county/ county livestock Population	Livestock deaths per species	Mortality rate per species	Remarks
Baringo county	Cattle	507,672	1560	0.307%	normal
	Goats	943,607	2010	0.213%	Normal
	Sheep	377,231	3000	0.7%	Slightly above normal
	Camels	13,249	5	0.037%	normal

	Donkeys	5002	12	0.23%	normal
	Poultry	1,012,570	8000	0.79%	Normal

### Birth rate

The general birth rates were slightly above normal across all livelihood zones, at 2.5 percent as compared to mortalities which were at one percent.

### Reasons for Deviations:

The birth rates were attributed to good performance of both JJA and OND rains of 2022 during conception and gestation period. The birth rate remains normal (2-4%) for all livestock species across all livelihood zones. This normal rate was attributed to the good rainfall experienced last year, extending into January of this year, which provided sufficient feed, resulting in good livestock body condition and increased conception rates. This was normal for this time of the year, with most cows conceiving due to their good body condition.

### Water for Livestock

There were several sources of water for livestock, including streams, rivers, springs, piped water, boreholes, shallow wells, and water pans (Table 11). These sources differed in return average distances, with Mixed farming and Irrigated cropping livelihood zones typically having shorter distances of 1-2 kilometers, while Pastoral and Agro-pastoral livelihood zones had trekking distances of 4-7 kilometers. The expected duration for each source varied as well, with Mixed farming and Irrigated cropping zones benefiting from continuous water availability, while Agro-pastoral and Pastoral zones expect their sources to last for approximately three months.

The current sources of water, which include permanent rivers, streams, water pans, boreholes, and shallow wells, experienced a recharge of 60-80 percent during the review period. Despite variations in water sources and trekking distances attributed to recharge levels and rainfall amounts, there were no limiting factors affecting access to water across all livelihood zones. The successful recharge during the short rains, extending to off-season periods, ensured sufficient water availability for livestock, with durations ranging from continuous in some zones to several months in others.

**Table 11: Livestock water sources**

	Sources		Return average distances (km)		Expected duration to last (months) for each source	
	Current	Normal	Current	Normal	Current	Normal
Mixed Farming	Streams, Rivers, springs, piped water, boreholes,	Streams, Rivers, springs, piped water, boreholes,	1-2	1-1.5Km	Throughout	Throughout
Irrigated cropping	Rivers, shallow wells and springs.	Rivers, shallow wells and springs.	1-2	1-1.5	Throughout	Throughout
Agro-pastoral	water pans, Boreholes, rivers	Streams, water pans, Boreholes	4-5	4-7	3 months	3 months
Pastoral	Bore-holes, water pans,	Water-pans, Bore-holes	4-5	4-7	3 months	3 months

### Livestock watering frequency

Livestock watering frequency remained consistent across all livelihood zones in Baringo County, with cattle, goats, and sheep currently watering twice daily, while camels are watered once daily in comparison to normal. The uniformity in watering frequency was attributed to good water recharge across the county.

Most of the water sources in the county have been replenished, ensuring sufficient water supply for livestock in the coming three months. However, if the long rains do not arrive on time in the subsequent six months, there may be a reduction in watering frequency.

Livelihood zone	Cattle		Camels		Goats		Sheep	
	Current	Normal	Current	Normal	Current	Normal	Current	Normal
Agro pastoral Farming	Twice daily	Twice daily	NA	NA	Twice daily	Twice daily	Twice daily	Twice daily
Mixed farming	Twice daily	Twice daily	NA	NA	Twice daily	Twice daily	Twice daily	Twice daily
Pastoral	Once daily	Once daily	Once daily	Once daily	Once daily	Once daily	Once daily	Once daily
Irrigated cropping	Twice daily	Twice daily	N/A	N/A	Twice daily	Twice daily	Twice daily	Twice daily

#### 3.1.4 Impacts on availability

The OND season is important for the county's food security needs as it complements the gains made from the MAM season, contributing about 20 percent of the county's food needs. Crop harvests both from the rain fed and irrigated agriculture will enhance the existing food stocks hence ensuring that the stocks are able to last the up to the next long rains harvest by August. The improved milk production levels will contribute to households' incomes through milk sales especially in the Mixed farming livelihood zone as well as enriching household food diversity through direct milk consumption. Improved livestock body condition will enhance household income sources especially in the Pastoral areas as the animals are likely to fetch better market prices.

### 3.2 Market operations

Main livestock and food markets include Kipsaraman, Barwessa, Loruk and Kinyach in Baringo North sub county, Kolloa, Nginyang, Tangelbei and Amaya in Tiaty East and West sub counties, Marigat and Kabel in Baringo South sub county, Majimoto and Emining in Mogotio sub county, Iloti, Kapchorua and Kapcholoi in Eldama Ravine sub county. All the markets were operational as they were well stocked with various commodities although cereal prices including maize were still high compared to STA. On the other hand, livestock prices were on an improving trend due to the ongoing recovery in livestock body condition for all species. The demand for livestock animals was higher than the supply as most farmers opted to keep their animals for fattening and reproduction following an improvement in forage conditions. Insecurity challenges especially in Baringo North were affecting the feeder livestock markets. Food commodities such as maize were being sourced from both within and without the county.

#### 3.2.1 Market prices

##### Maize prices

The average maize prices were at Kshs. 70/kg by January, which was a decrease of seven percent in comparison to the previous month of December (Figure 4). The current prices were higher than the STA at this time of the year by 16 percent and were slightly above the seasonal range. The trend of decreasing maize prices over the last four months was attributed to the conclusion of harvesting of maize in the Irrigated and Mixed farming livelihood zone as well as in the neighboring counties. Pastoral livelihood zone recorded the highest average price of Kshs. 75 per kg while Irrigated livelihood zone recorded the lowest at Ksh.50 per kg.

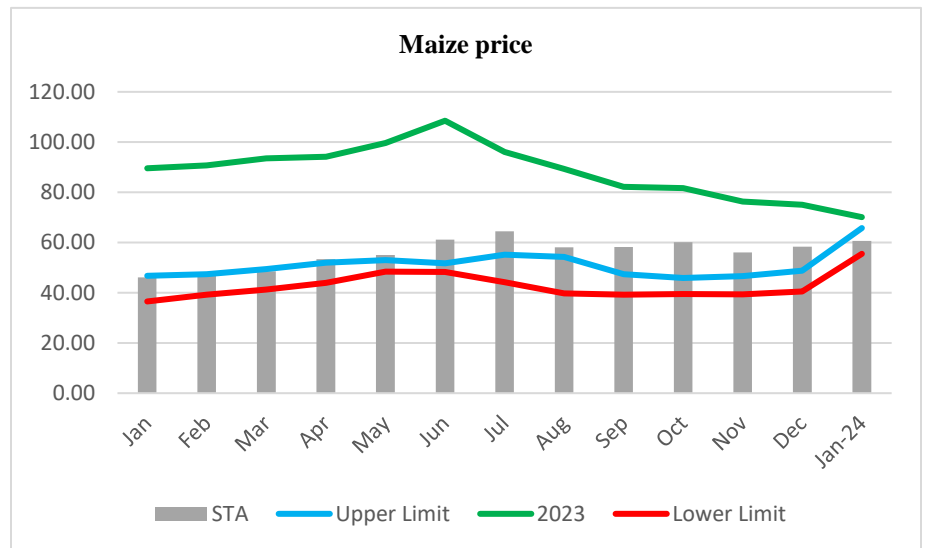


Figure 2: Maize prices

### Goat prices

The average price of a medium sized goat increased by 3.9 percent from the previous month of December to retail at Ksh.3,978 by January 2024 (Figure 5). The price was above the STA by 54 percent and falling outside the seasonal range. The prices were highest in Irrigated livelihood zone at Ksh. 4,233 and lowest in Agro-pastoral livelihood zone at Ksh.2,800. The low prices in the Agro-pastoral livelihood zone was attributed to the frequent insecurity situations that have affected market operations particularly in Baringo North sub county. The current trend of high goat prices was attributed to the prevailing good livestock body condition in the county.

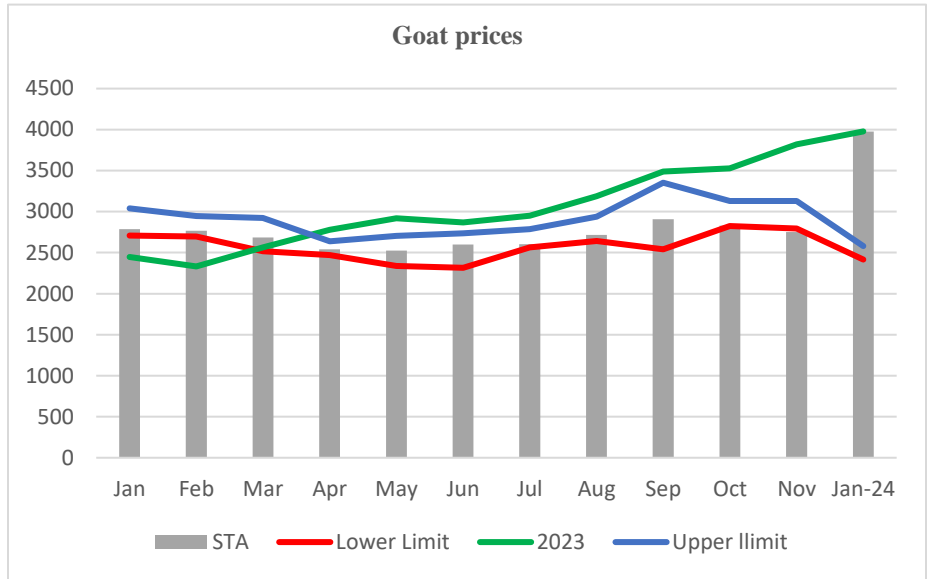


Figure 3: Goat prices

### 3.2.2 Terms of trade

The terms of trade were improving for the last four months whereby by January, a farmer was able to buy 57 kg of maize from the sale of one goat, which was an improvement of 12 percent as compared to the previous month (Figure 6). The current terms of trade were above the short-term

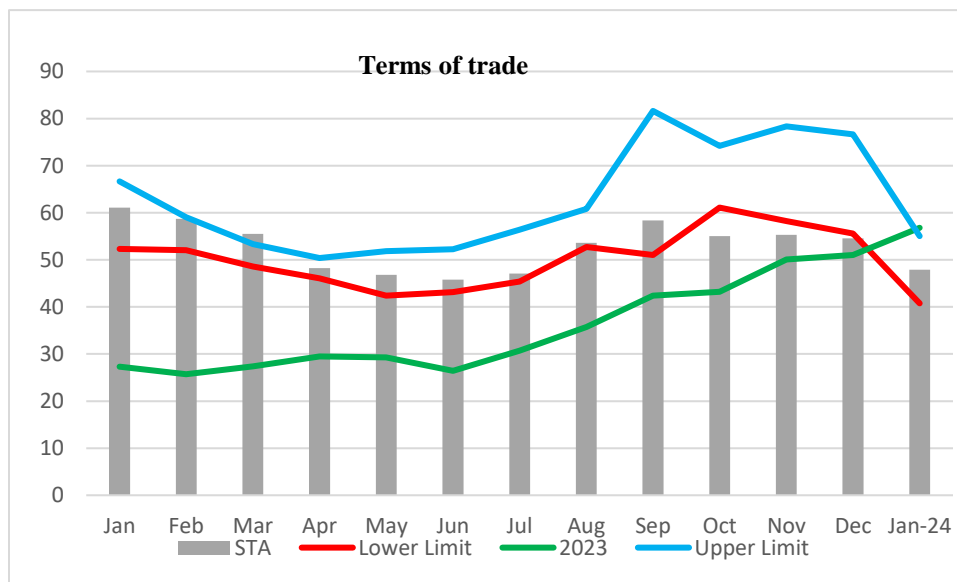


Figure 4: Terms of trade

mean by 19 percent and were almost falling within the seasonal range. The improving trend in terms of trade was attributed to better goat prices and decreasing maize prices. Irrigated cropping

livelihood zone had the highest terms of trade at 85 while Agro-pastoral livelihood zone had the least at 39.

### 3.2.3 Income sources

The main sources of cash income are varied across the livelihood zones key among them being livestock production, cash crop production, and casual waged labour among others as illustrated in Table 12. Income from sale of livestock went up due to improved livestock body condition which attracted good market prices. Sales from tomatoes and other horticultural crops in the Irrigated zone was good compared to the previous seasons.

**Table 12: Income sources**

Sources of Income	Contribution to Cash Income per Livelihood Zone (%)			
	Pastoral LZ	Agro-pastoral LZ	Irrigated LZ	Mixed Farming LZ
Livestock Production	88	50	5	23
Food Crop Production	-	4	5	5
Cash crop production	--	-	59	30
Small Business	1	4	5	7
Casual Waged Labour	1	15	10	20
Formal Waged Labour	1	5	4	5
Poultry Production	2	5	3	1
Fishing	-	10	4	-

### 3.2.4 Water access and availability

#### Major water sources

The main sources of water for both livestock and domestic use include; rivers, water pans, dams, lakes, streams, protected shallow wells, springs, swamps, boreholes and traditional river wells. Most water sources were mainly concentrated in Mixed farming livelihood zones where the potential is high and rainfall amounts are higher as compared to Pastoral and Agro-pastoral livelihood zones which are rocky and poorly served by rivers. Most of the rivers were operating below normal to normal capacities, ranging from 30-70 percent of their normal capacities across all the livelihood zones except for isolated cases like Endao and Kagir rivers that were dry. Water pans in Pastoral and Agro-Pastoral livelihood were recharged at 40-60 percent of their normal capacities as compared to 60-80 percent of their normal. In the Mixed farming and Irrigated cropping areas of Barwessa, Marigat wards and areas of Muserechi and Salawa it was recharged between 50-70 percent as compared to 70-90 percent normally. However, some few water pans in Emining ward, Silale ward and upper parts of Tirioko wards have already dried up as they were minimally recharged. The variance in the current water levels in the open water sources was due to poor temporal distribution of the rains in the county. The available water in open water sources was likely to last for one to two months in Pastoral Agro-pastoral areas while in Irrigated cropping and Mixed farming livelihood zones, it can last for three to four months.

The status of water levels in springs, shallow wells and boreholes were stable across all livelihood zones and can last for over six months. Currently 80 percent of the boreholes were operational across all livelihood zones; however, some few boreholes were not operational due to normal electromechanical breakdowns while the non-operational water pans was due to high siltation and poor recharge in areas that had poor distribution of the short rains.

### Distance to water sources and waiting time

The average distances to domestic water sources were stable at 3-4 km in Pastoral and Agro – pastoral livelihood zones, as compared to a normal of 3-5 km. The distances were normal at 0.5 - 1.5 km in Mixed farming and Irrigated farming zones with minimal increasing trends. The waiting time at the water source ranged between 1-5 minutes across all the livelihood zones due to water stability in terms of access and availability. Water was free at open water sources while the cost of water at developed water sources was generally stable at ksh.3-5 across all livelihoods. Water consumption per person per day was above normal at 20 – 25 litres per person per day in Mixed farming and Irrigated cropping livelihood zone while it was 15-20 litres in Agro-pastoral and Pastoral livelihood zone compared to a normal of 10-15km. About 10 – 15 percent of households were using treated water by boiling and others were using water treatment chemicals such as aqua tabs. Typhoid, Amoeba and Malaria were the main water related diseases which were commonly reported across all the livelihood zones. Table 13 gives a summary of trekking distances, cost, time and water consumption at household level across various livelihood zones.

**Table 13: Water distances, cost, waiting time and consumption**

Ward / livelihood zone	Return Distance to Water for Domestic Use (Km)		Cost of Water at Source (Ksh. Per 20litres)		Waiting Time at Water Source (Minutes)		Average Water Consumption (Litres/person/day)	
	Normal	current	Normal	Current	Normal	current	Normal	Current
Pastoral	3 - 5	2-4	3-5	3-5	3-5	3-5	10-15	12-15
Agro-pastoral	2-5	1-3	3-5	3-5	3-5	3-5	12-15	15-20
Mixed Farming	0.5-1.5	0.5-1.5	3-5	3-5	1-2	1-2	15-20	20-25
Irrigated Cropping	0.5-1.5	0.5-1.5	3-5	3-5	1-2	1-2	15-20	20-25

### Cost of water and Consumption

Water vendors were selling at Ksh. 20-50 per 20 litre jerry can depending on distances. About 30-40 percent of the villages relied entirely on water vendors county wide and this was attributed to poor water quality and long trekking distances to the water sources. The hot spot areas in terms of water deficit were; Lobo, kampi samaki, Kiserian, Bekibon, kalabata, katuru, kipkolonyin, kinyach, kamar oterit, Chepanda in Ribkwo; Chesetim, Embositita, silale ward, Patpat, Akoret, Kongor, Lokis and Ngoron in Tirioko

There were high concentrations at the following water points in the county; Kanguria ,akwichatis Wells,NaudoBH ,Chemeri BH,Tangulbei, Nginyang BH, Muiya, Noiywet BH,Nguberet BH,Kiptoim BH,Koitebes WS,Lelen BH,Kamar BH and Magoi, Kisanana BH,Olkokwe,Kamasai and Oldebos BH, Silonga BH, Chemorongion BH and Sirata BH, Ngoswonin and telan. Soymining BH, Kiplongony bh. *Kiberenge spring*, Kipsaraman BH, Karimo. The high concentration was attributed to limited water sources, poor recharge as well as mechanical/electrical breakdown of some water facilities.

### 3.2.5 Food consumption

#### Food consumption score

Food consumption score was acceptable across the county, which has been improving over the last four months (Figure 7). There was a decline in food consumption gaps at the household level as the county did achieve some crop harvest, improved milk production and consumption. Availability of leafy vegetables also assisted in improving nutrition status. However, in the Pastoral livelihood zone, about seven percent of the sampled households had poor food consumption score by January 2024 and this could have been attributed to poor feeding practices and food consumption gaps in areas that did not receive adequate rains such as Silale and Loyamorock wards. Issues of insecurity in Pastoral areas were also contributing to food consumption gaps as the displaced households were having challenges of food access.

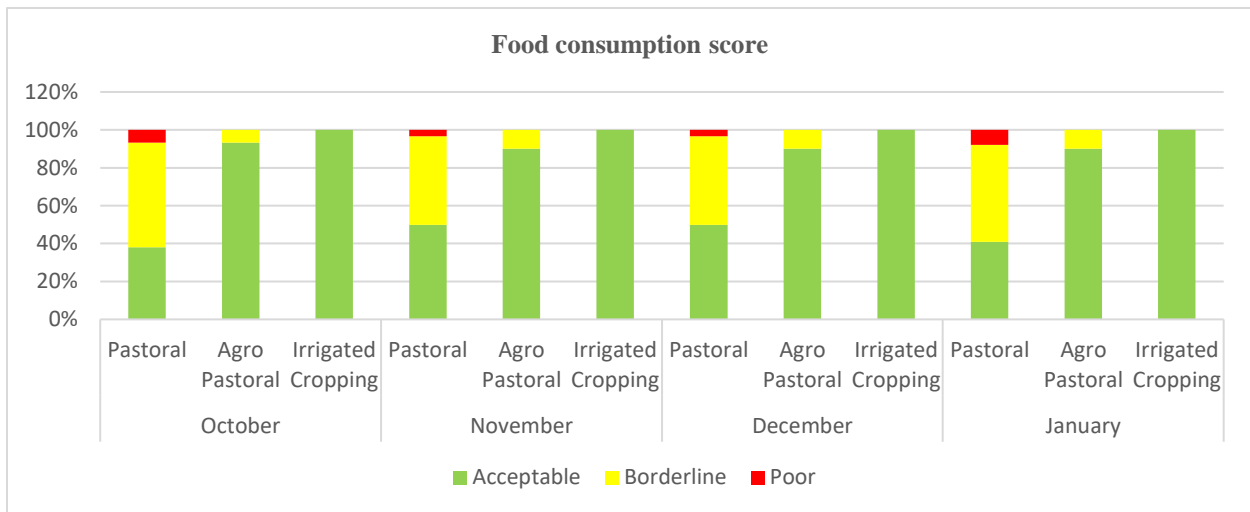


Figure 5: Food consumption score

### 3.2.6 Coping strategy

#### Coping strategy index

(CSI) The average coping strategy index was at 13 by January, which was almost stable compared to the previous three months (Figure 8). Households in the Pastoral livelihood zone employed more coping strategies at 15 followed by Agro-pastoral livelihood zone at nine while the Irrigated cropping zone employed the least coping mechanisms at 3.2.

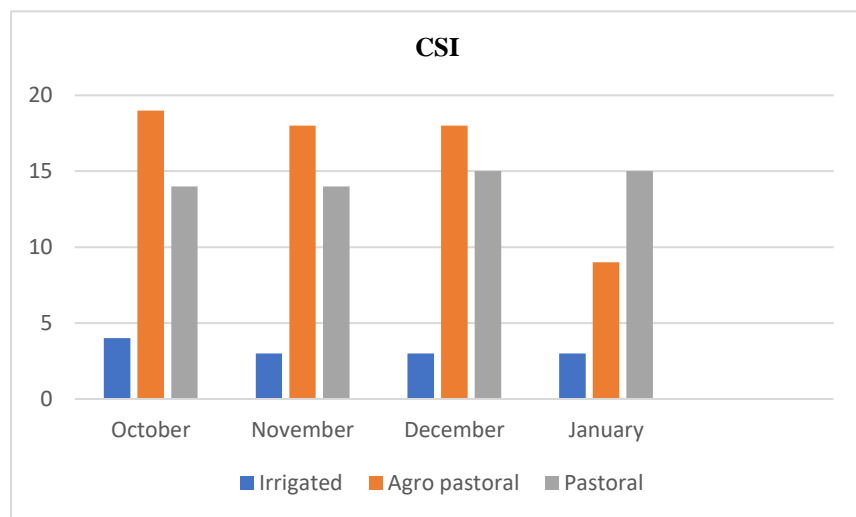


Figure 6: CSI

### 3.3.1 Morbidity and mortality patterns

#### Morbidity for General Population and under five children

The number of children seen with upper respiratory tract infection in the period under review was higher compared to the long-term average. During the OND season, there was an increase in morbidity due to malaria upsurge compared to LTA. The higher number of cases of upper respiratory infections could be attributed to cold season during the short rains season in the high lands. Morbidity among the adult population followed the same pattern (Figure 9).

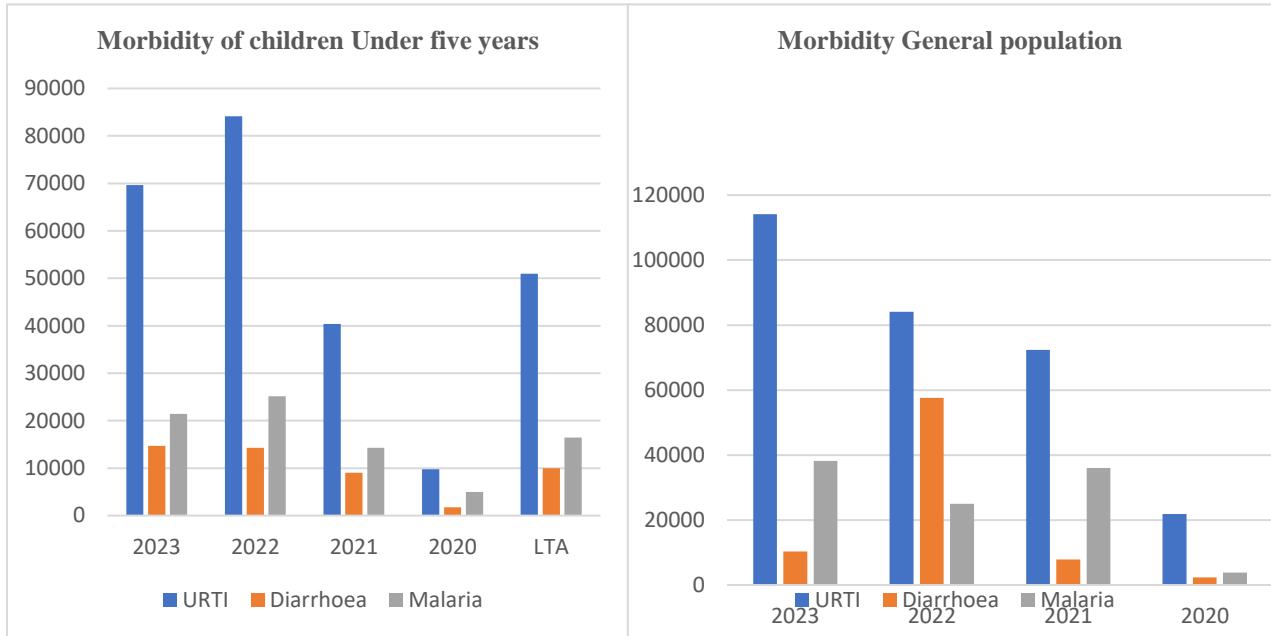


Figure 7: Morbidity

### 3.3.2 Immunization and Vitamin A supplementation

#### Immunization coverage

Data from DHIS indicates that the proportion of children who were fully immunized in 2023 was above the national target of 80 percent (Figure 10). The data showed that all antigens were above the acceptable level of 80 percent coverage and this could be attributed to intergraded health and nutrition outreaches in the period under review.

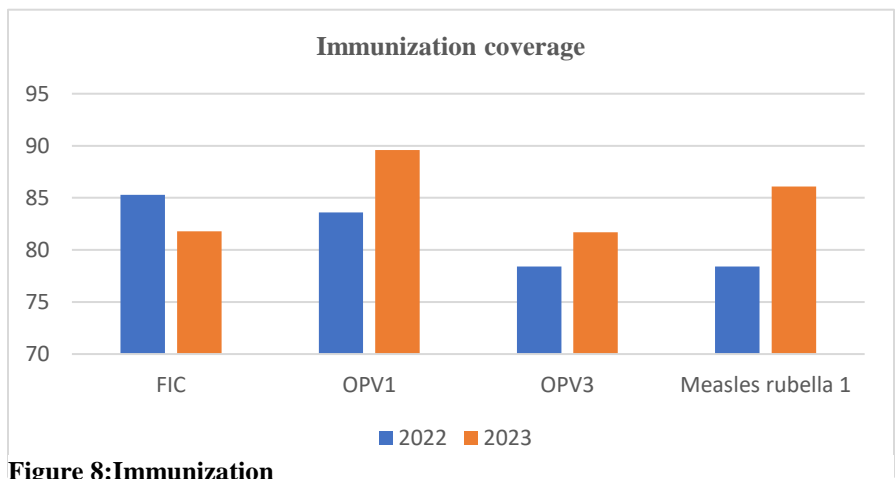


Figure 8: Immunization

### Vitamin A supplementation

The bar chart (Figure 11) shows a high vitamin A supplementation coverage above the nation target for the year 2023 for children aged 6 -59 months was (82%) compared to last year 2022(80.7%) and this could be due to improved documentation and accelerated Malezi bora program in the county.

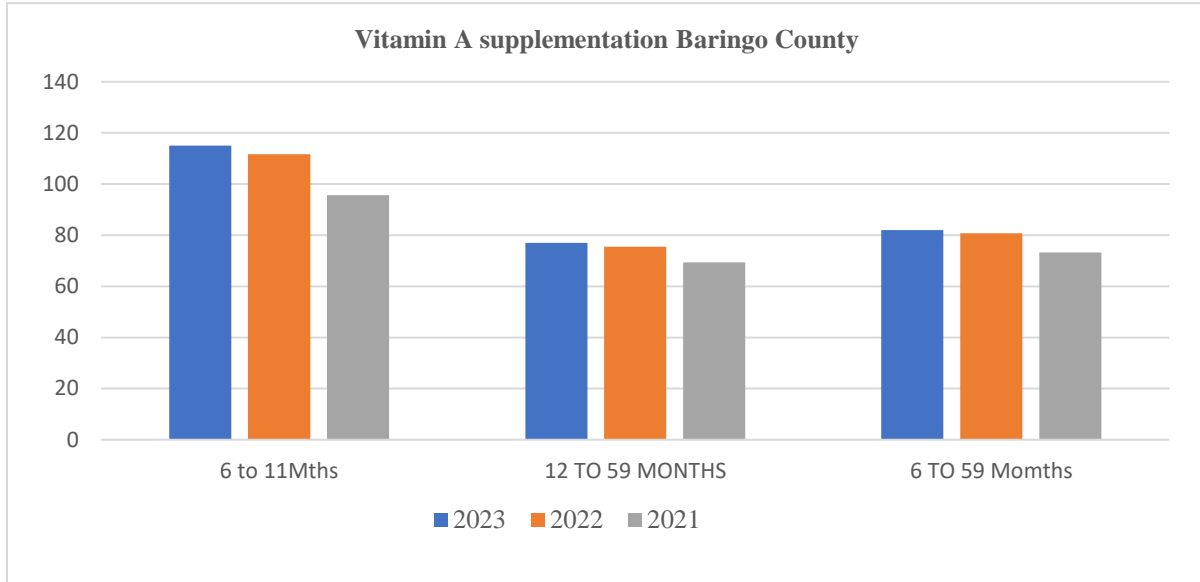


Figure 9: Vitamin A coverage

### 3.3.3 Nutrition status

#### Nutrition status by GAM and SAM

The proportion of children (6-59 months) who were found malnourished based on the global acute malnutrition (GAM) reduced from 26.4 percent in 2022 to 23.3 percent in 2023 (Figure 12). This was attributed to intervention put in place by Baringo County Government, -Department of Health with support from partners. However, GAM rates still remained high at Critical phase. Malnutrition levels were in serious phase in Baringo North and South with GAM prevalence of 8.2 percent.

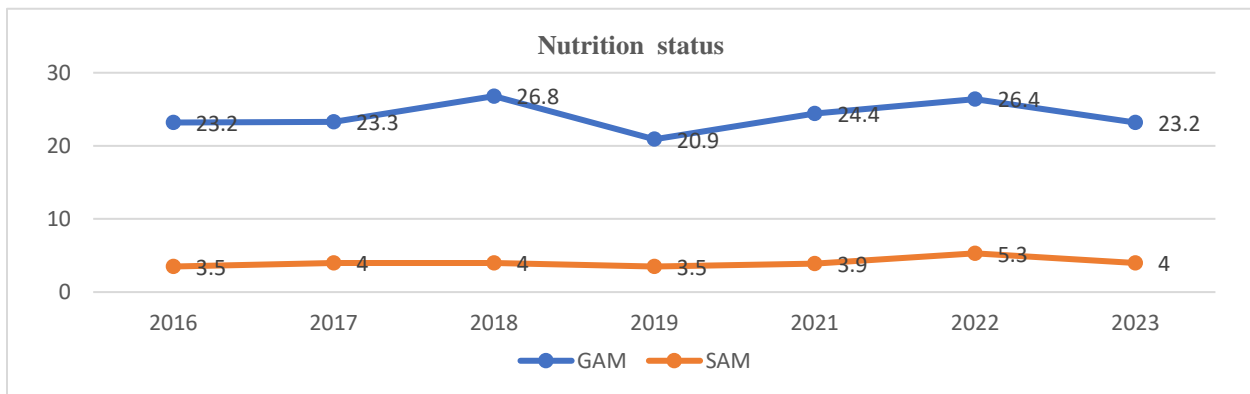


Figure 10: Nutrition status by GAM and SAM

### Nutrition status by MUAC

The proportion of children sampled with a MUAC below 135mm during the month was 17 percent. This was 2.6 percent higher as compared to the previous month (Figure 13). The current proportion is stable in relation to the long-term mean. The high malnutrition cases across all livelihood zones is contributed by poor hygiene practices as well as child care practices. However, the cases still within normal seasonal ranges due to the ongoing nutrition interventions in Tiaty East, Tiaty West and Baringo South sub counties. The situation is expected to worsen because of down scaling of Supplementary feeding program (SFP) in Baringo central, Mogotio, Koibatek and Baringo North and the reduction of the nutrition outreaches in some part of the county.

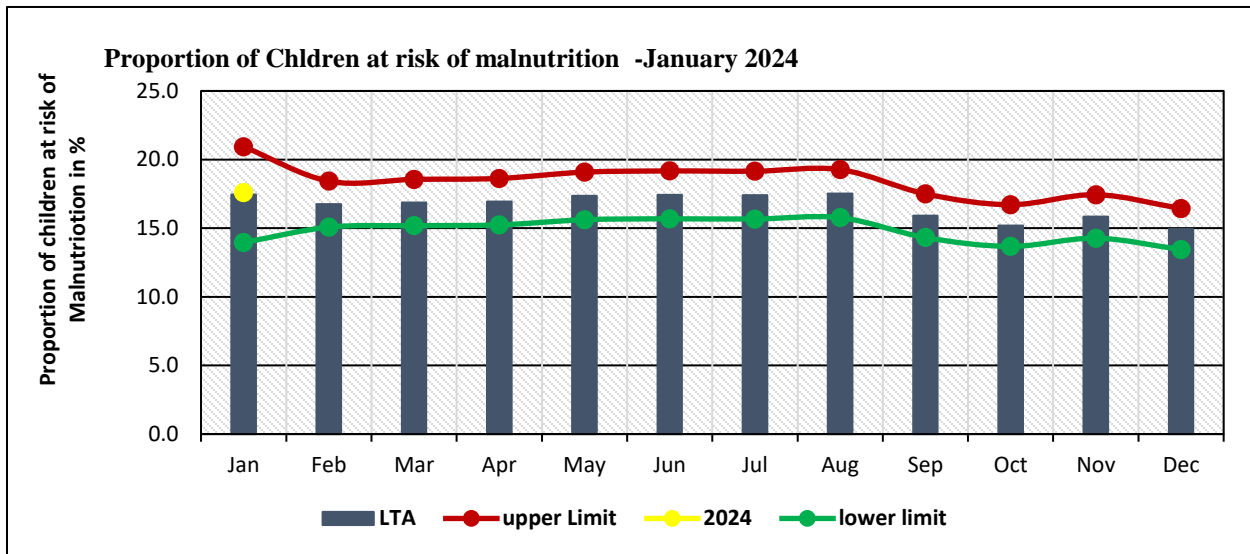


Figure 11: Nutrition status by MUAC

### Admission trends

The number of children attending OTP and SFP programs declined during the season under review as compared to the same period in year 2022 (Figure 14). The decline could be attributed to the presence of favorable conditions for food productivity in the last two rainfall seasons resulting in improved food consumption in terms of quantities and quality. The ongoing nutrition outreach programs also played a big role in arresting cases of malnutrition at an earlier stage hence reducing admission cases.

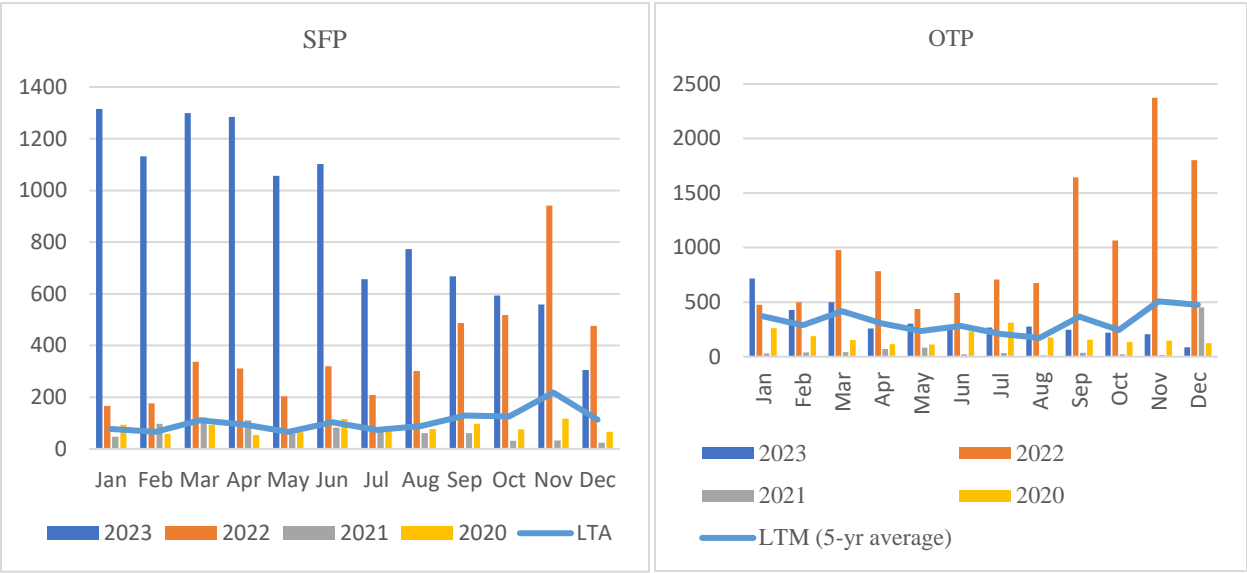


Figure 12: Admission trends

### 3.3.4 Sanitation and Hygiene

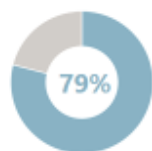
#### Sanitation and Hygiene

According to the SMART survey findings of July 2023, the main water sources in Tiaty East, Tiaty West, Baringo North and Baringo South sub counties were traditional river wells at 25 percent followed by boreholes at 15 percent. Over 90 percent of the households washed hands before eating with Tiaty areas leading at 97.7 percent (Figure 15). This was followed by washing hands after visiting toiled at 90.2 percent in Baringo North and South sub counties while Tiaty was at 37.7 percent. About 19.9 percent of the respondents in Baringo North and South sub counties and 12.3 percent in Tiaty East and West sub counties washed hands at four Critical times. These habits have been sustained after COVID 19 pandemic. About 22 percent of the respondents washed hands with soap and water while 51.6 percent washed hands with water only.

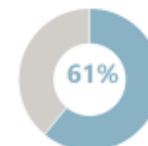
## Hand Washing knowledge and practice

Percentage of respondents who are aware of hand washing moments

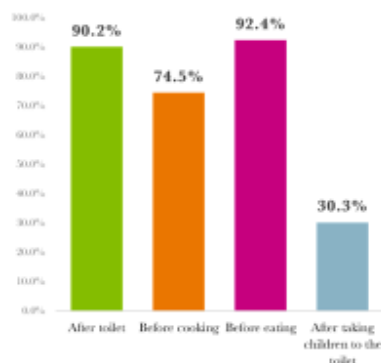
Baringo N&S= 504



Tiaty N= 558



Hand Washing Practice N= 396



Hand-Washing Practice N= 342

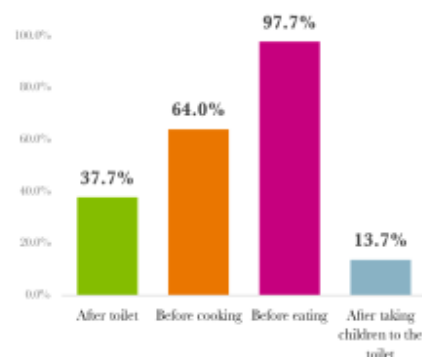


Figure 13: Hand washing practices

### Latrine coverage

Tiaty sub counties had the lowest latrine coverage and the highest open defecation in the County although there has been a gradual improvement in coverage over the last few years due to enhanced awareness campaigns carried out by stakeholders (Table 14). The low coverage in Tiaty was mainly attributed to the cultural practices and nomadic lifestyle of the community and this has a negative impact on nutritional status due to possibility of upsurge of water related diseases that may affect food utilization.

Table 14: Latrine coverage

Sub County/ Livelihood zone	Latrine coverage		
	July -Dec 2022 % Coverage	July-December 2023 % Coverage	Open defecation (bushes) (%)
Eldama Ravine	78	90	3
Baringo Central	47	71	7
Baringo South	46	48	24
Mogotio	45	78	8
Baringo North	42	46	23
Tiaty West	3.14	8	93
Tiaty East	3.14	8	88

### 3.4 Food security trends

**Table 15: Food security trends**

Indicator	Long rains assessment, July, 2023		Short rains assessment, January, 2024	
% of maize stocks held by households	15		88	
Livestock body condition (Cattle)	Agro-pastoral	Fair	Agro-pastoral	Good
	Irrigated cropping	Good	Irrigated cropping	Good
	Mixed Farming	Good	Mixed Farming	Good
	Pastoral-all species	Fair	Pastoral-all species	Good
Water consumption (litres per person per day)	Agro-pastoral	10-15	Agro-pastoral	15-220
	Irrigated cropping	20-25	Irrigated cropping	20-25
	Mixed Farming	20-25	Mixed Farming	20-25
	Pastoral-all species	12-15	Pastoral-all species	12-15
Price of maize (per kg)	96		70	
Price of goat	2,950		3,978	
Distance to grazing	Agro-pastoral	6-10	Agro-pastoral	1-3
	Irrigated cropping	1-2	Irrigated cropping	0.5-1.5
	Mixed Farming	1-2	Mixed Farming	0.5-1.5
	Pastoral-all species	7-10	Pastoral-all species	2-4
Terms of trade	31		57	
Coping strategy index	County-14 Agro-Pastoral-17 Pastoral-15 Irrigated Cropping-4		County-13 Agro-Pastoral-9 Pastoral-15 Irrigated Cropping-3	
Food consumption score	Acceptable	50	Acceptable	54
	Borderline	40	Borderline	40
	Poor	10	Poor	6

### 3.5 Education

#### 3.5.1 Enrolment

Baringo county has 1,045 public ECDE centers with an enrolment of 44400 children (21780 Boys and 22620 Girls), private ECDE centres are 176 with an enrolment of 7,880 (3,971 boys and 3,909 girls). There are 741 public primary schools with enrolment of 131784 (67939 boys, 63845 girls) while private primary schools are 102 with an enrolment of 19,658 (10,044 boys and 9,602 girls). Public Secondary schools are 194 (189 public) with an enrolment of 59126 (29872 Boys and 29254 Girls) and finally 5 private secondary schools having 1,971 learners (906 boys & 1065 girls). The positive deviation in enrolment (one percent) was attributed to the mop exercise which emphasizes on 100 percent transition government policy, new admissions in the JSS and Secondary schools, availability of school meals programs, availability of bursaries and scholarships. Enrolment in Junior secondary schools were stable in comparison to the previous term though there were reported cases of JSS and Secondary school drop out in Central totaling 112 JSS (40 boys and 72 girls), 105 Secondary (70 boys, 45 girls).

Baringo South experienced a drop in Secondary school enrollment because of conflicts.

There was increase in Koibatek and Baringo North by 3296 and Decrease in other sub counties by 8548. JSS increased by 12140. Increase in secondary by 1979 all sub counties except Marigat which decreased by 812. Table 12 summarizes enrolment status in the county.

**Table 16: Enrolment**

SCHOOL	2023			2024			Indicate Increase (+) and Decrease (-)
	BOYS	GIRLS	TOTAL	BOYS	GIRLS	TOTAL	
PRESCHOOL	20188	16813	37001	21780	22620	44400	+7399
PRIMARY	71013	57303	137106	67939	63845	131784	+3296 (Koibatek/B.North) -8548(All)
JSS	8193	7611	15804	13603	13582	27185	+12140(All JSS increased)
SECONDARY	29016	28635	57651	29872	29254	59126	+1979(All) -812(Marigat)

#### 3.5.2 Food availability in schools during the season

There was In-kind meals provision for Tiaty East, Tiaty West, Baringo North, Mogotio and Baringo South sub counties targeting 151,832 learners. The county also had cash transfers or HGSMF for Baringo Central targeting 29 schools with a combined 530 learners (BBoys-250, Girls-.300). Koibatek and Baringo Central sub counties benefited from none of these programs, implying that about 76,274 learners were not having access to feeding programs. Measures put in place on handling and storage of food include; All the cooks were required to have medical certificates, clean water was used for food preparation, presence of food stores which have been fumigated and there are stacks for food storage and lastly there was proper dressing by the cooks (aprons and headgears). Table 17 gives a summary of school meals feeding status in the county.

**Table 17: School feeding program**

S/NO	SCHOOL	UNDER SMP			WITHOUT SMP		
		BOYS	GIRLS	TOTAL	BOYS	GIRLS	TOTAL
1	Pre school	16674	18504	35178	5106	4116	10022
2	Primary	47084	43246	90330	20855	20599	41454
3	JSS	10505	10561	21066	3097	3021	6118
4	Secondary	29872	29254	59126	0	0	0

### 3.5.3 Water availability in schools during the season

The main water sources for schools in the county were boreholes, rivers, water bowsers, rain water harvesting and water pans. The number of schools with no access to safe water sources were 620 ECDE centers, 486 primary schools and 35 secondary schools. There were 678 ECDE, 468 primary schools 154 secondary schools with functional rain-water harvesting infrastructure. Some schools were treating their water. Education partner impact provided water tanks to 731 primary and 68 secondary schools and water treatment solutions. Water from the community managed boreholes also benefitted from treatment plants. Wherever there was no water in schools, no cooking takes place thus resulting in high cases of absenteeism, breakout of diseases and food contamination.

### 3.5.3 Effect of the season on school infrastructure

There was no school that was closed but learning was temporarily disrupted because of the effects of the short rains and some of the school infrastructure was damaged during the review period. Some schools had their roofs blown off by strong winds. Teachers and learners' toilets were also flooded. The rains also affected accessibility to education institution as some institution although not flooded, were marooned by flood waters rendering them inaccessible for example Kiserian school the learners needed a boat and a foot bridge to access the school. In sandai and Lobi, learners needed foot bridges for them to cross over the swollen lake Bogoria to reach their respective schools. In other cases, heavy rainfall resulted in rock falls and landslides that blocked access to schools, a good example of this was experienced in Eitui, Kaplel, Tabagon in Baringo Central and Sangarau in Baringo South and Kipng'orom in Mogotio. None of the schools was hosting any IDP camps during the season under review.

### 3.5.4 Inter sector links

During the Short rains season, a number of students both from ECDE to secondary level were affected by common colds, malaria and were treated by health personnel. The students also benefitted from deworming, vitamin A supplementation and supply of mosquito nets from the Ministry of health. The number of schools with inadequate functional latrines were 308 ECDE, 134 primary schools and 7 secondary schools. Most schools have benefited from handwash tanks and water points done by Save the Children, UNICEF and IMPACT water. Those with inadequate or no hand-washing facilities were 58 ECDE, 145 primary schools and 4 secondary schools. Girls received sanitary kits during the third term which were issued by the Government (MOE) and education partners.

### 3.6 Child protection

#### Child migration

During the season under review, about 28 percent (a total of 23 boys; 3 girls) of the interviewed household respondents stated that they had experienced various forms of child migration which included intra and inter county migrations. These migrations were attributed to parents' separation, insecurity in the place of origin, drought, search for water and good pasture for the animals, orphan hood and child labor.

#### Family separation

Forty-two households (57%) reported various forms of family separation which included separated parents, children living on streets, unaccompanied children and child headed households. The separations were attributed to lack of food/ poor nutrition, parental neglect, insecurity, peer pressure, poverty, alcoholism, child labor, harmful cultural practices among other reasons.

**Table 18: Breakdown of Separated Children by Categories: Boys, Girls, and Specific Subgroups**

Type of Separations	Boys	Girls	total
Separated children	56	34	90
Unaccompanied	2	1	3
Living on the streets	7	2	9
Child headed	24	6	30

#### Violence against children, GBV

About 43 percent of the sampled households reported having experienced incidents of violence against children which included sexual violence, neglect, psychological violence, corporal punishment, emotional abuse, physical abuse among others. Some of the reasons attributed to violence against children include harmful cultural practices (forced marriage), neglect, lack of basic needs, inadequate parental care and guidance, family separation, poverty issues, abusive parents, alcoholism, mental issues among other reasons.

**Table 19: Types of Violence Affecting Children: Gender-Specific and Total Counts**

Type of Violence	Boys	Girls	Total
Sexual violence	3	10	14
Neglect	32	41	73
Psychosocial violence	4	9	
Physical Abuse	6	4	10
Emotional Abuse	3	2	5

#### Child marriage

About 30 percent of the sampled households reported incidents of early child marriage particularly affecting the girls while another 36 percent reported incidents of teen pregnancy during the assessment period under review. This was attributed to by parental neglect, forced marriages, cultural practices, high level of illiteracy, poor attitude by parents on matters education, child separation, peer pressure, sexual abuse, drug and alcohol abuse, use of phone and other social media platforms and lack of parental guidance among other reasons.

**Table 20: Child Marriage and Teen Pregnancy: Gender-Specific and Total Counts**

<b>Child marriage &amp; Teen Pregnancy</b>	<b>Boys</b>	<b>Girls</b>	<b>Totals</b>
Child Marriage	5	27	32
Teenage Pregnancy	10-14 yrs	15-17 year	
	23	564	587

### **Children with disability**

About 18 percent of the sampled households reported that they were accommodating children with various forms of disability which included physical disability, cerebral palsy among others.

### **Intervention Measures**

There were various forms of ongoing interventions addressing child protection rights and these included case management services, family reunification services, cash transfers, referrals for multi sectoral services, psychosocial support, justice services, health services and prevention services/social norms/change programs.

## **4.0 FOOD SECURITY PROGNOSIS**

### **4.1 Prognosis assumptions**

- According to FEWSNET seasonal forecast review, the March-April-May (MAM) rains Of 2024 will most likely be normal within the region while temperature regimes are likely to be slightly above normal.
- Market prices for livestock are expected to continue improving due to the prevailing good livestock body condition while cereal prices may continue to exhibit a marginal decline due to supply forces
- Forage conditions are expected to remain good especially in the Mixed farming, Irrigated cropping and parts of Agro-pastoral livelihood zone.
- Livestock body condition for cattle and other livestock species will remain stable and in good condition due to the expected stability in forage conditions across livelihood zones
- Water access and availability will continue to be stable in most parts of the county and may last up to the next season.
- The existing household cereal stocks will be able to sustain households up to the next long rains crop harvest.
- Resource based conflicts may continue to be witnessed in parts of Baringo North and Baringo South sub counties.

### **4.2 Food security outlook for the next six months**

#### **February-March-April**

Food consumption at the household level is expected to remain near normal across all the livelihood zones due to availability of food stocks that have been accumulated over the last two seasons as well as improved milk production. Access to cereals within the Pastoral areas is expected to be good due to improving terms of trade which will enhance household purchasing power. On the other hand, range land conditions are expected to remain fair to good across the livelihood zones hence resulting in improved pastures and browse availability. However, there are

pockets that may experience forage deficit especially in Silale, Loyamorok, Tirioko and parts of Emining wards and this was caused by poor rainfall distribution. Milk production and consumption will remain near normal for the next one month but may decline towards the end of March. Milk prices are expected to remain stable for the next three months. Market operations are expected to remain normal with livestock prices improving gradually while cereal prices will decline marginally for the next two months due to the supplies that are coming from the other counties. Terms of trade are therefore expected to improve mostly for the Pastoral households.

Water access and availability will remain stable for the next two months although the trekking distances to watering points may start to increase gradually by March due to the prevailing high temperatures that may cause water reduction via high evaporation rates. Water consumption at the household level will remain normal to above normal across all livelihood zones while cost of water will remain normal. Water quality will remain relatively good during the first two months but may deteriorate towards the end of March due to reduction in water volumes which may result in increased water concentrates. Dietary diversity is expected to improve due to readily available green vegetables and fruits which are mostly being sourced from within the county. In the Pastoral areas, access to a variety of food stuff including vegetables and fruits will improve due to favorable terms of trade thus resulting in improved purchasing power. Households are expected to reduce adoption of severe coping strategies as a means of accessing food due to the expected marginal improvement in food availability and reduced cereal prices. Malnutrition cases are expected to remain stable and within the seasonal range.

### **May-June-July**

Food consumption at the household level will remain stable and near normal across all the livelihood zones as the county will still be having adequate food stocks that may last up to the next long rains crop harvest. As for the Pastoral areas, access to food will be fair as terms of trade are expected to remain favorable to Pastoral households. It is expected that rangeland conditions will be rejuvenated further due to the impact of the MAM rains whose performance is expected to be normal. This therefore means that pasture and browse will be in sufficient quantities and quality hence resulting in improved livestock productivity in terms of milk production, live carcass weight among other parameters. Water access and availability is expected to have improved further due to recharge of water sources following the onset of the MAM season. Water consumption per person per day will therefore be expected to remain normal to above normal across livelihood zones. Issues of water quality and quantity will therefore be expected to remain good during the outlook period. Dietary diversity across livelihood zones is expected to remain within acceptable limits as the MAM rains will trigger improved availability of fresh leafy vegetables and fruits which will go a long way in complimenting the existing cereal stocks. There will be minimal cases of households adopting severe forms of coping strategies in accessing food while incidents of malnutrition will remain within acceptable range.

## 5.0 CONCLUSIONS AND RECOMMENDATIONS

### 5.1 Conclusions

#### 5.1.1 Phase classification

The overall county IPC phase was in phase two (Stressed). Pastoral and Agro-pastoral livelihood zones were in phase two (Stressed). The Irrigated, Marginal mixed and Mixed farming livelihood zones were in phase one (None/Minimal).

#### 5.1.2 Summary of findings

The county had acceptable food consumption score of 39 percent, although the Pastoral livelihood zone had the highest proportion of households not having acceptable food consumption during the period under review, whereby about eight, 51 and 41 percent of the sampled households had poor, borderline and acceptable food consumption score by January 2024. For consumption based coping strategies (rCSI), about 83 percent, 17 percent and zero percent of the sampled households were applying none, stressed and crisis strategies respectively by January. On livelihood coping, about 17 and 83 percent of the sampled households in January had crisis and no coping strategies respectively. The proportion of children at risk of malnutrition was 18 percent by the end of January which was within the seasonal range.

#### 5.1.3 Sub County ranking

Sub County	Rank (Worst to best)	Main food security threat/Contributing factors	
Tiaty West	1	<ul style="list-style-type: none"><li>• Poor pastures</li><li>• Malnutrition</li><li>• Insecurity</li></ul>	<ul style="list-style-type: none"><li>• Livestock diseases</li><li>• Livestock migration</li></ul>
Mogotio	2	<ul style="list-style-type: none"><li>• Livestock migration</li><li>• Poor rainfall performance</li></ul>	

Baringo North	3	<ul style="list-style-type: none"> <li>• Livestock diseases</li> <li>• Insecurity</li> <li>• Crop pests and diseases</li> </ul>	
Tiaty East	4	<ul style="list-style-type: none"> <li>• Poor rainfall distribution</li> <li>• Malnutrition</li> </ul>	<ul style="list-style-type: none"> <li>• Livestock diseases</li> <li>• Livestock migration</li> </ul>
Baringo South	5	<ul style="list-style-type: none"> <li>• Conflict</li> <li>• Livestock migration</li> </ul>	<ul style="list-style-type: none"> <li>• Livestock diseases</li> <li>• Crop pests and diseases</li> </ul>
Baringo Central	6	<ul style="list-style-type: none"> <li>• Good rainfall performance</li> <li>• Crop pests and diseases</li> </ul>	
Eldama Ravine	7	<ul style="list-style-type: none"> <li>• Good rainfall performance</li> <li>• Crop pests and diseases</li> </ul>	

## 5.2 Ongoing interventions

### 5.2.1 Food interventions

Food and Agriculture organization (FAO) carried out a cash transfer program targeting 1,000 households whereby each beneficiary is benefiting Kshs 12,000. So far they have received the first tranche of Kshs 6,000.

Give Direct is implementing a none conditional cash transfer program in Baringo South sub county targeting 10 locations where each beneficiary is expected to receive a total of Kshs 110,000 in three tranches. The program targeted 6,487 beneficiaries out of which 3,159 have already received their full transfers.

Reconcile is also implementing a cash transfer program in Tiaty East sub county targeting 635 beneficiaries whereby each beneficiary is expected to receive Kshs 8045.

The Kenya Red Cross is implementing a six months cash transfer program which is funded by USAID-BHA and is targeting 2,859 households, each receiving Kshs 6,539 per month. The program is being implemented in Mogotio, Baringo South, Baringo North, Tiaty East and Tiaty West sub counties.

## 5.2.2 None food interventions

AGRICULTURE							
Sub County	Intervention	Ward	No. of beneficiaries	Implementers	Impacts in terms of food security	Cost	Time Frame
Baringo South, Baringo North, Tiaty East and West, Baringo Central, Mogotio	Resilient building program to households	Saimo Soi, Bartabwa Sacho, , Churo/Amaya, , Mochongoi, Kolowa, Ilchamus and Kisanana	9,725	County Government of Baringo, ELRP	Restoration and rehabilitation of livelihoods destroyed by DL	67 M	November 2020-December 2024
ALL	Affruiation program	ALL	5,000	County Government of Baringo	Increased area under fruits cover for environmental conservation and food security	10 million	2023-2024
ALL	Promotion of farmer service centres	Marigat, Mogotio, Kabarnet, Kabartonjo, Eldama Ravine	25	County Government and WFP	Improve access to inputs by farmers and promote entrepreneurship	10 Million	2023-2024
ALL	Nutrition Sensitive and Food Utilization initiatives	ALL	25,000	WFP, SHA, County Government of Baringo, DRLSP, KCSAP, National Government	Increased household food nutrition and stability in food security	300 M	2020-2024
LIVESTOCK							
Baringo South Baringo North	Vaccination against LSD, CCPP and PPR	All wards	3000HH	BCG/ELRP	10M	Boost livestock Health	MAY-JULY 2023

Mogotio , Baringo Central							
Baringo north, Baringo South, Tiaty and Mogotio	Provision of Galla bucks, Sahiwal bulls and Dorper rams to groups	All wards	500HH	BCG/SHA/FSK/ KCSAP/ ELRP	Improve livestock productivity	2.M	MARCH-JULY 2024
All sub-counties	Capacity building of Farmers and staff.	All wards	1,000HH	BCG(MOALF) Partners	Well Infirm staff and farmers for best practices	1M	Through out
Mogotio	Construction of livestock feed store	All wards	200HH	BCG/DRLSP	Improved pasture conservation	5M	MARCH-SEPT 2024
<b>WATER</b>							
Pastoral and Agro-Pastoral livelihood Zones	General water supply and borehole rehabilitation	All wards	380HH	BCG, NG, KRCS,	Improved water access and availability	18m	On going
All sub counties	Construction of New water Projects	All wards	1560HH	BCG, NG,	Improved water access and availability	46M	On going
All sub counties	Drilling and Equipping Strategic 10 No. BHs	All wards	2620 HH	BCG, NG,	Improved water access and availability	200M	On going
All sub counties	Capacity building on water management and Catchment protection	All wards	2130 HH	BCG, NG, RCS, WV, UNCEF,	Improved water access and availability	4.5m	Ongoing

<b>HEALTH</b>							
Countywide	Vitamin A Supplementation	All health facilities, selected ECD	82,268 children	MOH supported by UNICEF, Helen Keller and child fund	Increased immunity against infections	2.5m	Two time a year (Malezi Bora Days)
Countywide	Zinc Supplementation	All health facilities	77,000	County department of health	Increased immunity against infections	900,000	Routine
Countywide	Management of Acute Malnutrition (IMAM)	120 health facilities	107,492	County department of health	Increased immunity against infections	250,000, 6000	6 routine
Countywide	IYCN Interventions (EBF and Timely Intro of complementary Foods) and promotion of Orange flesh sweet potato	All health facilities and community units	107,492	County department of health supported by IPC			

Countywide	Iron Folate Supplementation among Pregnant Women	All health facilities and community units		County department of health supported by WVK, UNICEF			Routine
Countywide	Deworming	All health facilities and community units		County department of health supported by WVK, UNICEF			Routine
Countywide	Positive deviance hearth models to rehabilitate underweight children/school vegetable lunch	14 sites in 3 sub counties		County department of health services, WFP, Catholic mission	200 learners		
<b>EDUCATION</b>							
MOGOTIO	Parents provided fuel wood and paid cooks  Providing the children with utensils	<b>Pre-primary/primary/Junior School</b>	<b>34139</b>	Parents, NGOs	Promote retention of learners in school		Termly
Koibatek	We need a school feeding program in schools in this location. This is the semi-arid lands of Koibatek	All Locations	30,0fx 00	GOK and World Food Program.	Increased Enrolment.		12 Months

### 5.3. Recommended interventions

#### 5.3.1 Food interventions

Sub County	2023 SRA Food security rank (Worst to best)	Population	Estimated proportion in need of immediate food assistance (%) per sub county	Wards	Estimated proportion in need of immediate food assistance (%) Per Ward
Tiaty West	1	73,424	(18,356) 25%	Tirioko	15-20
				Kolowa	0-5
				Ribkwo	15-10
Mogotio	2	91,104	7,288 (8%)	Mogotio	0-5
				Emining	15-20
				Kisanana	15-20
Baringo North	3	104,871	(12,584) 12%	Barwessa	10-15
				Saimo/Kipsaraman	0-5
				Saimo/Soi	20-25
				Kabartonjo	0-5
				Bartabwa	15-20
Tiaty East	4	79,923	19,980) 25%	Silale	15-20
				Loiyamorok	15-20
				Tangulbei/Korossi	10-15
				Churo/Amaya	10-15
Baringo South	5	90,104	(5,460) 6%	Mukutani	15-20
				Marigat	0-5
				Ilchamus	5-10
				Mochongoi	0-5
Baringo Central	6	96,951	(2,908)3%	Kabarnet (salawa)	0-5
				Sacho	0-5
				Tenges	0-5
				Kapropita	0-5
				Ewalel Chapchap	0-5

Eldama Ravine	7	129,535	2950 (2%)	Lembus	0-5
				Ravine	0-5
				Lembus Kwen	0-5
				Koibatek	0-5
				Lembus Perkerra	0-5
				Mumberes/maji mazuri	0-5
<b>Total population in need of food assistance</b>			<b>69,526</b>		

### 5.3.2 None food interventions

AGRICULTURE							
Sub County	Intervention	Ward	No. of beneficiaries	Proposed Implementers	Required Resources	Available Resources	Time Frame
All	Agri nutrition support – 1. Purchase and distribution of Traditional high value crops. 2. Construction of farm ponds 3. Supply of drip kits and multi-storey gardens and vegetable seeds	all	10000	National Government, County Government and FAO, WFP, ELRP,	Finances (Kshs 200 million)	Staff	2023-2024
ALL	Value addition of produce cereals (Maize, Sorghum and Millet) through milling and fortification of flour and Market linkages	Mogotio, Marigat Tenges	2000	WFP and County Government of Baringo	56M	Staff, Groups identified for support	2020-2024
ALL	Crops Post-harvest management • Construction of cereal stores • Purchase and distribution of hermetic bags • Purchase and distribution of solar	All	10000	National Government, County Government, and development partners	Finances (Kshs 20 Million)	Staff	2023-2024
LIVESTOCK							
Baringo	Vaccinations against LSD, CCPP and PPR Deworming Disease surveillance	-B/North, Mogotio & Tiaty(LSD , CCPP)	100,000 Cattle, 270,000 goats	BCG, FAO and other Development partners	5M	-	DEC 2024

		Tiaty, B/North (LSD)	50,000 Sheep		.4M		
Baringo	Establishment of strategic livestock feed reserves; 12 across 6 sub-counties	-Baringo North -Tiaty(E &W) -Baringo - South Mogotio	4,500HH	MOALF BCG NDMA(EU) Partners	90 M	-	July,2024 -Dec 2024
Baringo	Renovation/Construction of livestock Auction yards	Loruk, Amaya, Nginyang and Kolloa	13,000HH	BCG, Partners	50M		July,2024 -Dec 2024
Baringo	Provision of pasture seeds	All sub-counties	5000HH	BCG/Partners	5M	-	July,2024 -Dec 2024
Baringo	Employment of addition extension staff to replace retirees	All sub-counties	6,000HHs	BCG	100M	-	Continuous
<b>WATER</b>							
All	Water Harvesting (installation of water gutters)				Education partners i.e. Save the children, UNICEF, World vision	Funds to purchase water tanks, gutters	
All	Psychosocial Support			1245	Education partners i.e. Save the children, UNICEF, World vision	Funds	

Koibatek	Introduction of school feeding program		.	Increased Enrolment.	GOK and World Food Program		
<b>HEALTH</b>							
	Intensify Mass screening and referrals	150 facilities in the County			3.5M		43 sites reached-, 11 KRCS, UNICEF
	Provision of food supplements	County			38M		WFPF supporting through WVK UNICEF supporting through KRCS National government supporting through county commissioner
	<i>Integrated outreach services</i>	<i>115 hot spots and hard to reach sites in 6 sub counties</i>			15.0M		KRCS 22 sites –East Pokot on going WVK 4 sites in East Pokot-ongoing UTJ & ACF
<b>EDUCATION</b>							
All	Water Harvesting (installation of water gutters)		Education partners i.e. Save the children, UNICEF, World vision	Increased enrolment	Funds to purchase water tanks, gutters		
All	Psychosocial Support		Education partners i.e. Save the children, UNICEF,	Increased enrolment	Funds		

			World vision				
Koibatek	Introduction of school feeding program		GOK and World Food Program	Increased enrolment			