




A Vision 2030 Flagship Project



National Drought Management Authority
WEST POKOT COUNTY
DROUGHT EARLY WARNING BULLETIN FOR MAY, 2025.

MAY EW PHASE	Early Warning Phase Classification		
Drought Status: NORMAL  Shughuli za kawaida	LIVELIHOOD ZONE	EW PHASE	TRENDS
	Agro Pastoral	Normal	Stable
	Pastoral	Normal	Stable
	County	Normal	Stable

<p><u>Drought Situation & EW Phase Classification</u></p> <p><u>Biophysical Indicators</u></p> <p><u>Rainfall</u></p> <ul style="list-style-type: none"> The county received above normal rains during the reporting period. The amounts received were fairly good in both time and space across the livelihood zones. <p><u>Forage condition:</u></p> <ul style="list-style-type: none"> Vegetation condition index was above normal ranges Forage condition was fair to good which was normal <p><u>Socio-Economic Indicators (Impact Indicators)</u></p> <p><u>Production Indicators</u></p> <ul style="list-style-type: none"> Weeding stages for maize are in fair to good condition. Livestock body condition was fair to good. Low livestock in-migration was reported Livestock diseases were reported. Milk production was within normal ranges. <p><u>Access Indicators</u></p> <ul style="list-style-type: none"> Terms of trade were within normal ranges. Household water distances were within normal. Livestock watering distance were within the normal ranges. Water consumption was normal. <p><u>Utilization Indicators</u></p> <ul style="list-style-type: none"> Risk of malnutrition was within the normal ranges. Milk consumption was within the normal ranges Reduced Coping Strategy Index was above normal ranges. Proportion of households in acceptable were below the long-term average 	Biophysical Indicators	Value	Normal ranges	
	Rainfall (% of normal)	112	80-120	
	Rainfall Estimates in mm	134.61	50.71-130.02	
	VCI-3 month (NDMA FAO)	87.89	35-50	
	Forage Condition	Fair to good	Fair to Good	
	Production indicators	Value	Normal ranges	
	Maize Crop Condition	Fair to Good	Fair to Good	
	Livestock Body Condition	Fair to Good	Fair to Good	
	Milk Production (in litres)	1.4	1.4-1.9	
	Livestock Migration Pattern	Normal	Normal	
	Livestock Deaths (from Drought)	0.0%	≤5%	
	Access Indicators	Value	Normal ranges	
	Terms of Trade (ToT)	58	56-119	
	Return Distance to Water Sources (Km)	Household	3.2	2.3-4.0
		Livestock	2.4	1.7-3.9
Water Consumption	At Household	15	≥ 15	
Utilization indicators	Value	Normal ranges		
Percentage of children 6-59 months – At Risk < 135 mm	5.0	2.7-8.8		
Milk Consumption (in litres)	1.23	1.1-1.6		
Reduced Coping Strategy Index (rCSI)	5.28	1.2-2.1		
Food Consumption Score	32	80-100		

<ul style="list-style-type: none"> Short rains harvests Short dry spell Reduced milk yields Increased HH Food Stocks Land preparation 	<ul style="list-style-type: none"> Planting/Weeding Long rains High Calving Rate Milk Yields Increase 	<ul style="list-style-type: none"> Long rains harvests A long dry spell Land preparation Increased HH Food Stocks Kidding (Sept) 	<ul style="list-style-type: none"> Short rains Planting/weeding 								
Dry Season	Long Rains	Dry Cool Season	Short Rains Season								
Jan	Feb	Mar	Apr	May	Jun	Jul	Aug	Sept	Oct	Nov	Dec

1.0 CLIMATIC CONDITIONS

1.1 RAINFALL PERFORMANCE

- The county received good amounts of rain, which were fairly distributed in time and space across the livelihood zones. According to WFP-VAM datasets, the cumulative rainfall estimates amounts

improved by 24 percent to 134.61 mm from 108.69 mm in the previous month as shown in figure 1.

- According to data from the Kenya Meteorological Department's Automatic Weather Stations and

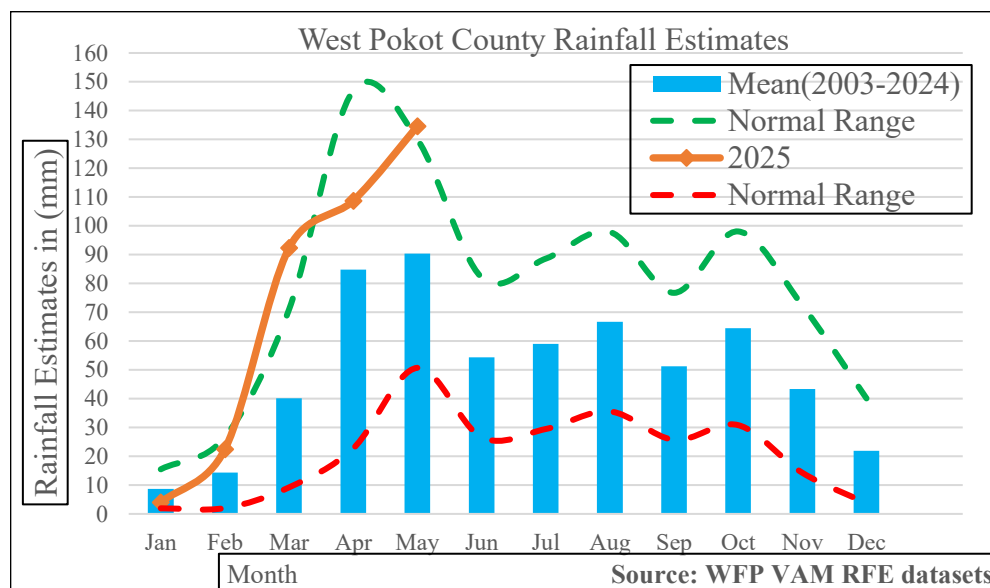


Figure 1: Rainfall Amounts in West Pokot County

manned rain gauges, the county received near-normal rainfall in May 2025 (Table 1). The heaviest rainfall of 229.5 mm was recorded at the Kapenguria AWS in Pokot West sub-county, while the least rainfall was received at the Kacheliba DCC office in Suam ward of Kacheliba sub-county.

- The rainfall estimates (WFP-VAM) amounts received were 49 percent above normal and four percent above the normal range of 50.71-130.02 mm as shown in figure 1.

Table 1: Weather Stations Rainfall in West Pokot County

Weather Station/Sub- County	Livelihood Zone	April 2025 Total Rainfall in (mm)	May 2025 Total Rainfall in (mm)
Sigor AWS (Pokot Central)	Agro-pastoral	127.5	145.2
Nasukuta (Pokot South)	Agro-pastoral	91.6	133.1
Chepareria (Pokot South)	Agro-Pastoral	119.4	182.6
Alale (Pokot North)	Pastoral	157.6	106.2
Kacheliba AWS (Pokot North)	Pastoral	117.3	70.3
Konyao – Kapchok (Pokot North)	Pastoral	129.2	79.4
Surumben-Masol (Pokot Central)	Pastoral	82.3	119.4
Kaibos (Pokot West)	Mixed Farming	138.3	162.8
Kapkatet (Pokot West)	Mixed Farming	182.1	156.4
Kapenguria AWS (Pokot West)	Mixed Farming	181	229.5
Total Rainfall		1326.3	1384.9

1.2 Other Events

1.2.1 Flooding

- During the month under review, River Korkou in Kasei Ward, Pokot North Sub-County, reported flooding of the river leading to two fatalities and interruptions to access to Kasei villages/centres across the river.

- In addition to as result of heavy rains that were experienced Kamila River overflowed and swept away a lorry that was carrying goods to Amudat market in Alale ward in Pokot North. No casualties were reported.
- The flooding events reported not only caused significant loss of life but also disrupted the livelihoods of the residents, as many were cut off from essential services and supplies. Local communities and authorities have not assessed the damages to guide planning for emergency relief to support the affected communities.

2.0 IMPACTS ON VEGETATION AND WATER

2.1 VEGETATION CONDITION

2.1.1 NDMA FAO Vegetation Condition Index (VCI) May 2025

- The 3 month vegetation condition index(VCI) improved to 134.61 from 103.62 recorded previous month. The VCI value indicated above normal of 35-50 of vegetation condition across the livelihood zones according to FAO monthly satellite datasets as shown in figure 2.
- The map shows that majority of the wards are with above normal vegetation condition. Kodich and Suam wards worsened to normal vegetation condition have as shown in figure 2 .
- The improved situation has been occasioned by the good amount of rains that were received across the livelihood zones. The situation improve from the second dekad through the third dekad of the current month under review.

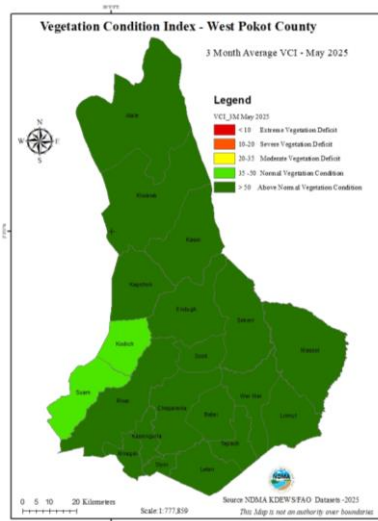


Figure 2: VCI 3 Month Map

2.1.2 Pasture

- The quality and quantity of pasture improved by 76 percent to stand at fair conditions of 88 percent from 12 percent in the previous month. Improving situation of pasture was as a result of wetter days during the current month.
- Pasture was fair to good across the livelihood zones, conversely, during the month indication to improvements towards good pasture conditions as shown in figure 3.
- Agro- pastoral livelihood zones showed an improvement at 100 percent (fair condition) while Pastoral showed an improvement at 82 percent (fair pasture condition).
- Pasture condition was worse compared to the similar period in the year 2023. The available pasture is likely to last for 2-3 months; as is the norm.

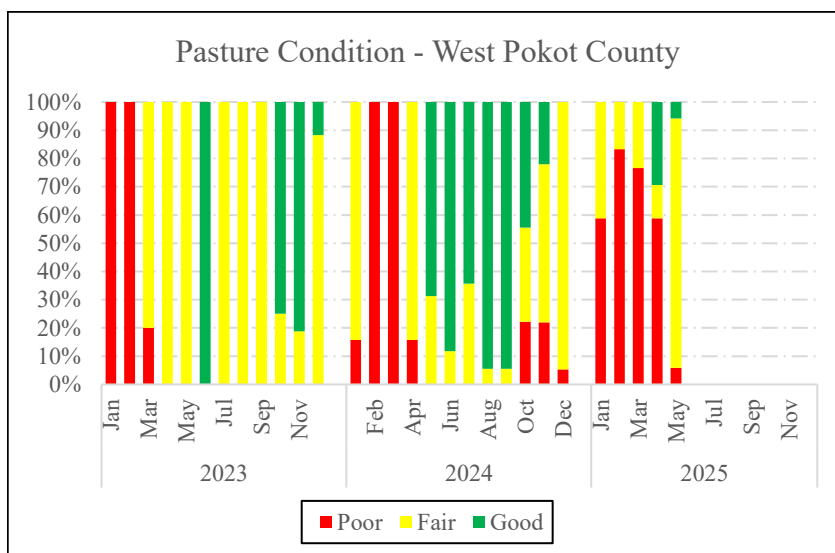


Figure 3 : West Pokot County Pasture Condition

2.1.3 Browse

- Browse condition improved by 65 percent to stand at 94 percent of good condition from 29 percent in the previous month in both quality and quantity (figure 4). The improved browse condition was occasioned by good rains received to offer supportive browse regeneration.
- Pastoral livelihood zone depicted fair and good conditions than Agro-Pastoral livelihood zone. This was occasioned with fairer wet conditions reported in the area.
- The browse condition was better than year 2024 and worse than 2023 in the same period.
- The available browse is likely to last for 3-4 which is normally.

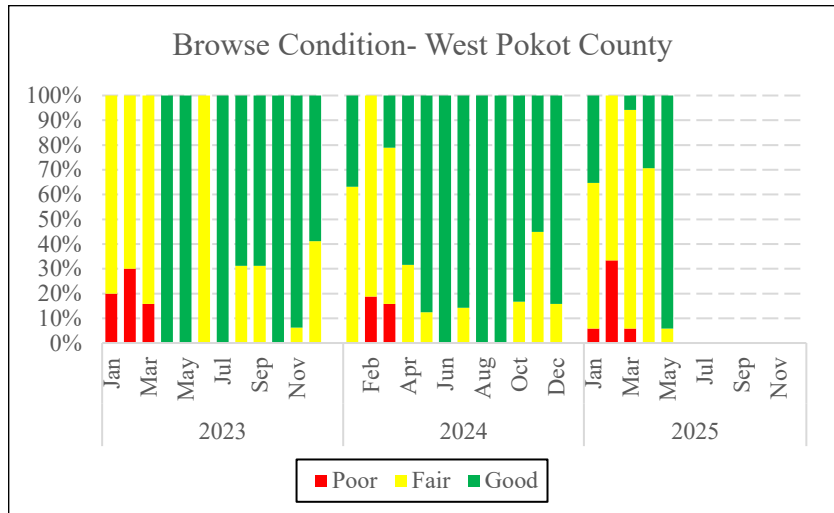


Figure 4 : West Pokot County Browse Condition

2.2 WATER RESOURCE

2.2.1 Sources

- The current major water sources for both human and livestock consumption during the month were boreholes, pans/ dams and traditional river well as shown in figure 5.
- Pans/dams, Boreholes and traditional river wells were relied on by households at 28, 24 and 18 percent respectively as shown in figure 5. The traditional river wells and boreholes use has been reported to be stable owed to stable state of water, specifically underground recharge.
- The state of water stabilized from previous month with recharge of open water facilities being at 40-50 percent from 35-45 in most areas. The recharge of water facilities was hampered by siltation occasioned by damming at the inlets of these facilities and breach embarkment.
- Pastoral and Agro-Pastoral livelihood zones recharge levels is about 25-35 and 60-70 percent respectively.
- The available open water sources are likely to last for 2-3 months compared to 3-4 months normally.

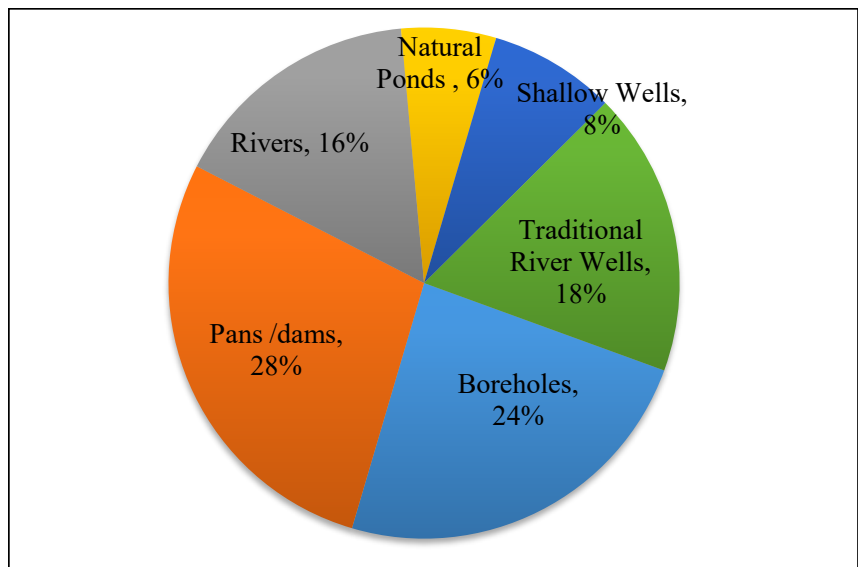


Figure 5 : Water Sources in West Pokot County

2.2.2 Household Access and Utilization

- The average return distances from the households to water sources stabilized at 3.2 km similar to that recorded in the previous month.
- Households across livelihood zones had no variations in trekking distances
- The households' trekking distances is three percent above normal, and 18 percent within the normal ranges of 2.3-4.0 km as shown in figure 6.

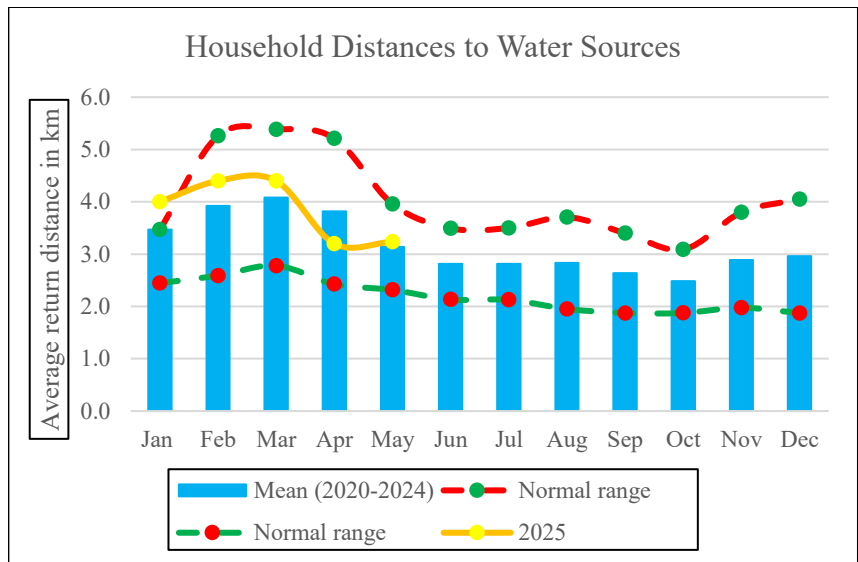


Figure 6: Household Access to Water

- Water consumption per person per day improved from 13 litres to 15 litres this attributed to improving water situation. The water consumption is within the normal 15 litres per person per day. Agro-Pastoral livelihood zone is consuming 13 litres per person per day while Pastoral zone is consuming 16 litres per person per day.
- None of households were purchasing water and treating water before consumption compared previous month.
- Based on the peak month for March-April-May (MAM) rains, the water sources are expected to improve in their volumes for a period of 1-3 months.

2.2.3 Livestock Access

- The average return distances from livestock grazing areas to watering points improved by eight percent to 2.4 km from 2.6 in the previous month. The improved livestock water access was occasioned by the recharge of open water sources.
- Livestock in Pastoral livelihood zones trekked higher distance compared to Agro-Pastoral Livelihood zone. Highest trekking distances was recorded in Masol and Weiwei ward.
- Livestock watering frequency was alternate and daily in Pastoral and Agro Pastoral livelihood zone respectively.

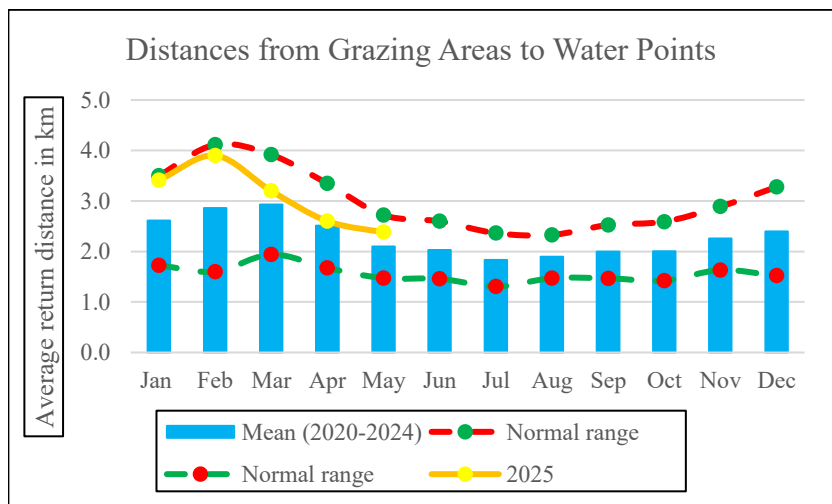


Figure 7: Distances from grazing areas to water points

- The current average distance from livestock grazing areas to watering points is 14 percent above normal, and 12 percent within the normal range of 1.5–2.7Km as shown in figure 7.

3.0 PRODUCTION INDICATORS

3.1 LIVESTOCK PRODUCTION

3.1.1 Livestock Body Condition

- Livestock body condition depicted moderate, neither fat nor thin, body condition for all species across the livelihood zones with an improving trend by 12 percent from 94 to 82 percent towards a good smooth body appearance in the current month as shown in figure 8.
- A large proportion of livestock in Pastoral livelihood zone had moderate, neither fat nor thin, body condition compared to Agro Pastoral livelihood zone had good smooth appearance.

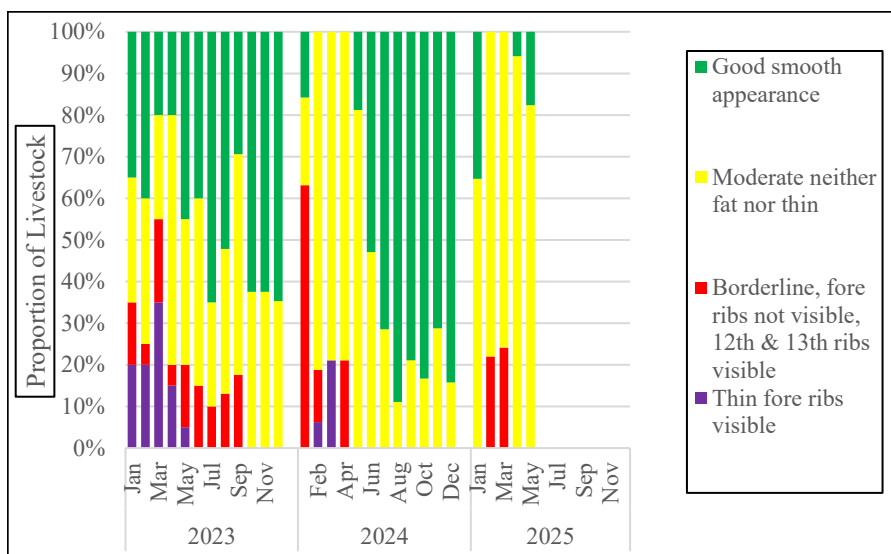


Figure 8: Cattle Body Condition

- The current livestock body condition was better compared to year 2023 in the same period.

3.1.2 Livestock Diseases

- Lumpy Skin Disease (LSD) cases were reported in Pokot North Sub County while Contagious Bovine Pleuropneumonia (CBPP) cases were reported in Pokot North, and Pokot Central Sub-Countries. Sheep and Goat pox disease was reported in Pokot North Sub County.
- Contagious Caprine Pleuropneumonia (CCPP) cases were reported in West Pokot, Pokot North, and Pokot Central Sub Counties, while Newcastle disease affecting poultry was reported in all Sub Counties. Fowl Pox was reported in Pokot South Sub Counties. (Table 2)
- The Veterinary department conducted vaccinations against black quarter (BQ) and CBPP, Peste des Petits Ruminants (PPR), and Fowl Pox targeting cattle, goats, sheep, and poultry. A total of 10,338 livestock populations were vaccinated in Pokot North, Pokot South, and Pokot Central Sub Counties.

Table 2: Livestock Pests and Diseases in West Pokot County, May 2025

Pest/Disease	Sub County	Case (s)	Mortality(ies)
Lumpy Skin Disease	Pokot North	44	0
CBPP	Pokot North and Pokot Central	298	5
Black Quarter	West Pokot, Pokot North and Pokot Central	2	2
PPR	Pokot North	279	4
CCPP	West Pokot, Pokot North and Pokot Central	948	64
Sheep and goat Pox	Pokot North	550	7
New Castle	All	272	39
Fowl Pox	Pokot South	216	10
Total Rainfall		2609	131

3.1.3 Milk Production

- The average milk production improved by 12 percent from 1.23 litres in the previous month to 1.38 litres in May.
- This improving trend was attributed to improving livestock body condition occasioned by improving water, pasture and browse situation.
- Milk production was higher in Agro-Pastoral livelihood zones compared to Pastoral zones.
- Current milk production was 18 percent below the short-term average amount and four percent below the normal ranges of 1.4-1.9 litres per household per day as shown in figure 9.

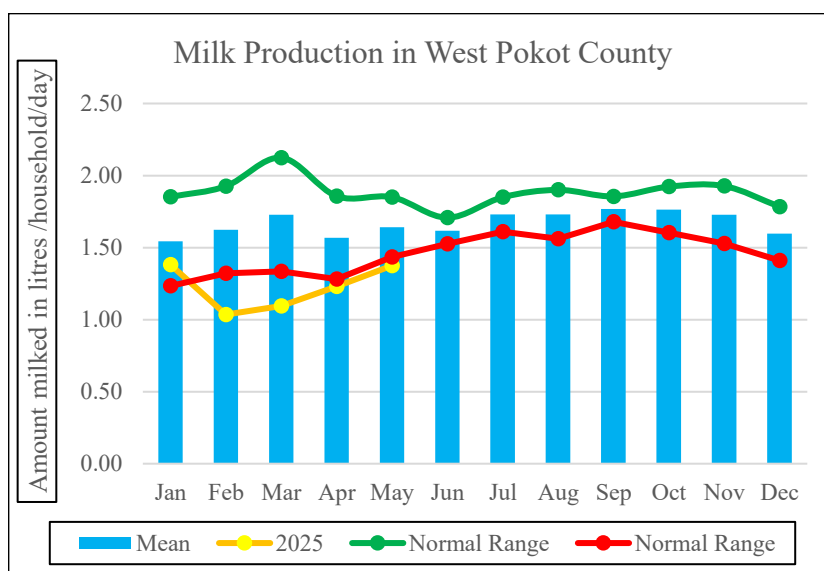


Figure 9: Milk Production
 Current milk production was 18 percent below the short-term average amount and four percent below the normal ranges of 1.4-1.9 litres per household per day as shown in figure 9.

3.2 RAIN-FED CROP PRODUCTION

3.2.1 Stage and Condition of Food Crops

- The major crops planted under rain-fed conditions in the Agro-Pastoral livelihood zone were maize and beans, while maize, beans, and Irish potatoes were major crops planted in the Mixed Farming livelihood zone.
- Currently, the majority of crops across the livelihood zones are at weeding stages and are in fair to good condition. Moreover, few of the farmers are still doing land preparations especially in low lands.
- The effect of the rainfall on the performance of the main food crops during the month. Maize – about 35,000 ha has been attacked by the fall armyworm. This attack has been made worse by the little rainfall received during the reported period. Farmers were advised to use various insecticides available in the local agrovet shops. In addition to Irish potato-growing areas, reports of late blight disease affected most crops (2,400 ha) due to the wet conditions, and this will lead to yield reduction. Farmers were advised to apply fungicides. Bacterial wilt disease was also reported in a number of fields.
- In addition to rain-fed cropping, the main crops grown under irrigated farming were onions, tomatoes, cabbages, and kales in parts of Pokot South and Pokot West Sub-Counties. The crops were in various stages of growth and in good condition.

4.0 MARKET PERFORMANCE

4.1 LIVESTOCK MARKETING

4.1.1 Cattle Prices

- The average market price for cattle improved by five percent to stand at Ksh. 26,500 compared to Ksh.25,250 recorded in the previous month.
- Cattle prices were higher in Pastoral livelihood zone at Ksh. 30,333 compared to Ksh 25,455 in the Agro-Pastoral livelihood zone. Lower livestock prices in the Agro-Pastoral livelihood zone were attributed to low demand of the commodity.
- The current market price of cattle was nine percent above the short-term average price and three percent below the normal range of Ksh. 19,567 – 28,250 (Figure 10).

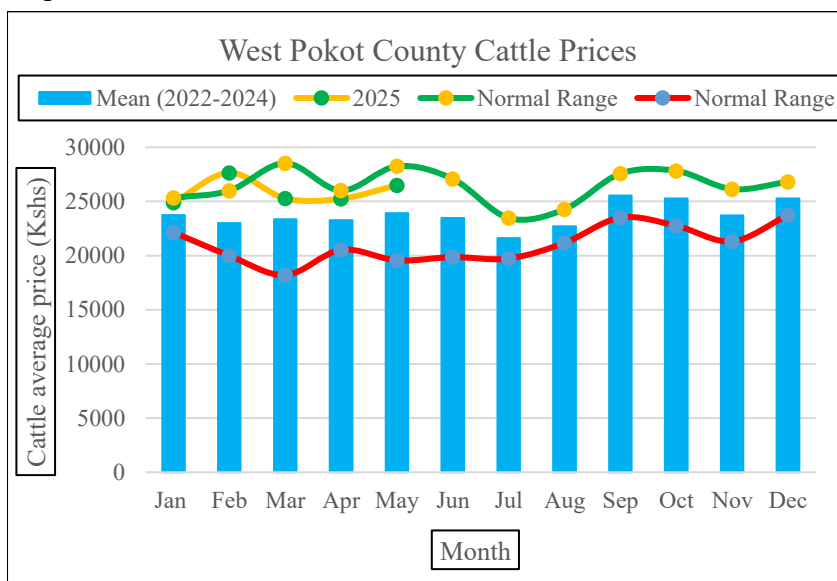


Figure 10: Cattle Prices

4.1.2 Small Ruminants Prices (Goat Price)

- The average market price of a goat worsened by five percent in May to stand at Ksh.4,512 from Ksh. 4,729 in previous month. The decrease in prices was attributed to decrease in demand owed to increased livestock pest and diseases.
- Agro-Pastoral livelihood zone recorded a higher price of Ksh. 5,667 compared to Ksh. 3,882 in Pastoral livelihood zone.
- The current market price of a goat is below normal by 16 percent and 28 percent within normal range of Ksh. 4,500-6,250. (Figure 11).

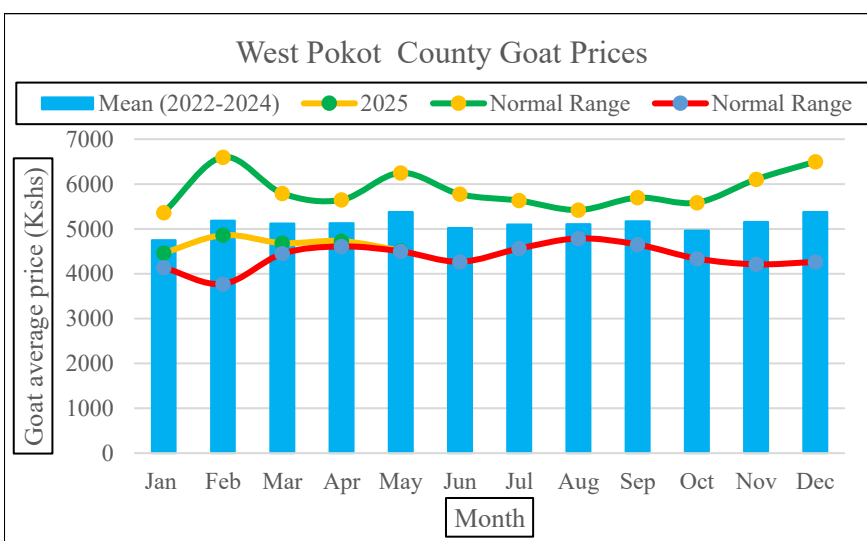


Figure 11: Goat Prices

4.2 CROP PRICES

4.2.1 Maize

- The average market price of maize per kilogram worsened by 12 percent in May to stand at Ksh. 77 compared to Ksh. 69 in previous months. This was attributed to increase in demand due low production and urgent need for maize seed for planting.
- Maize prices were higher in Pastoral livelihood zone at Kshs. 78 compared to Kshs. 76 in the Agro-Pastoral livelihood zones.
- Supplies of the maize commodity was mainly from outside source markets such as Trans-Nzoia County and the Republic of Uganda.
- The current market prices were 17 percent compared to the short-term average prices and 15 percent within the normal ranges of Ksh.42-91 as shown in figure 12.

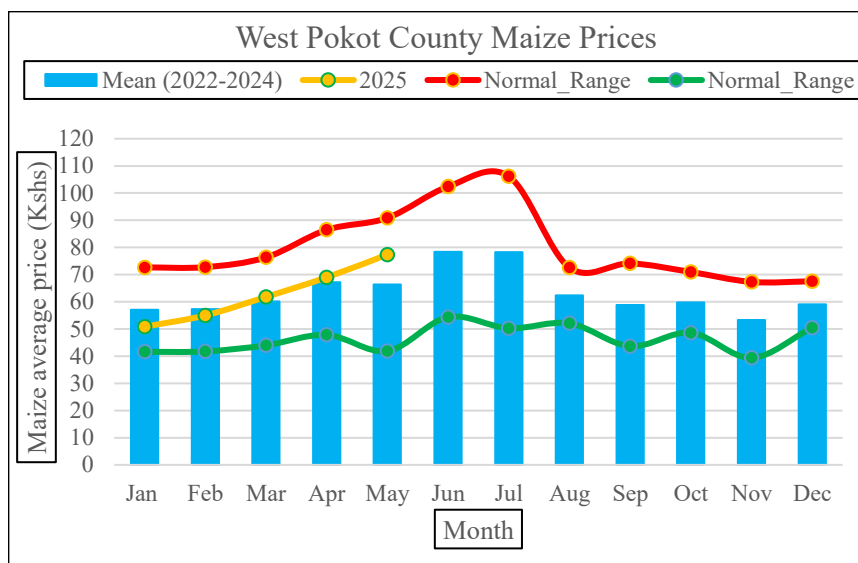


Figure 12: Maize Prices

4.2.2 Beans

- The average market price of beans per kilogram worsened by six percent in May to Ksh. 157 from Ksh. 148 in the previous month. The increase was noted due to low production and depletion that necessitated increase in demand.
- Beans price was lower in Pastoral livelihood zone compared to Agro Pastoral livelihood zone. Pastoral were well provisioned from outside the county.
- The current beans price is six percent lower than the short-term mean and six percent within the normal range of Ksh. 110-224 as shown in figure 13.

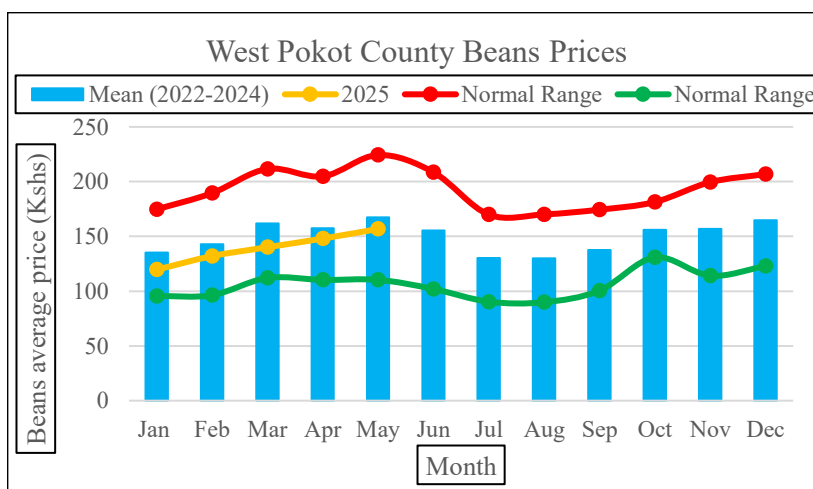


Figure 13: Beans Prices

4.3 Livestock Price Ratio/Terms of Trade

- Terms of trade worsened by 15 percent to 58 Kilograms in May from 69 kilograms in previous month. This shows that households were able to purchase 58 kilograms of maize from exchange of a goat. The terms of trade worsened due to high crop prices during the month under review.
- Terms of trade was unfavourable in Pastoral Livelihood zone compared to Agro-Pastoral livelihood zone.
- The current terms of trade are 33 percent below normal and four percent within the normal range of 56-119 kilograms as shown in figure 14.

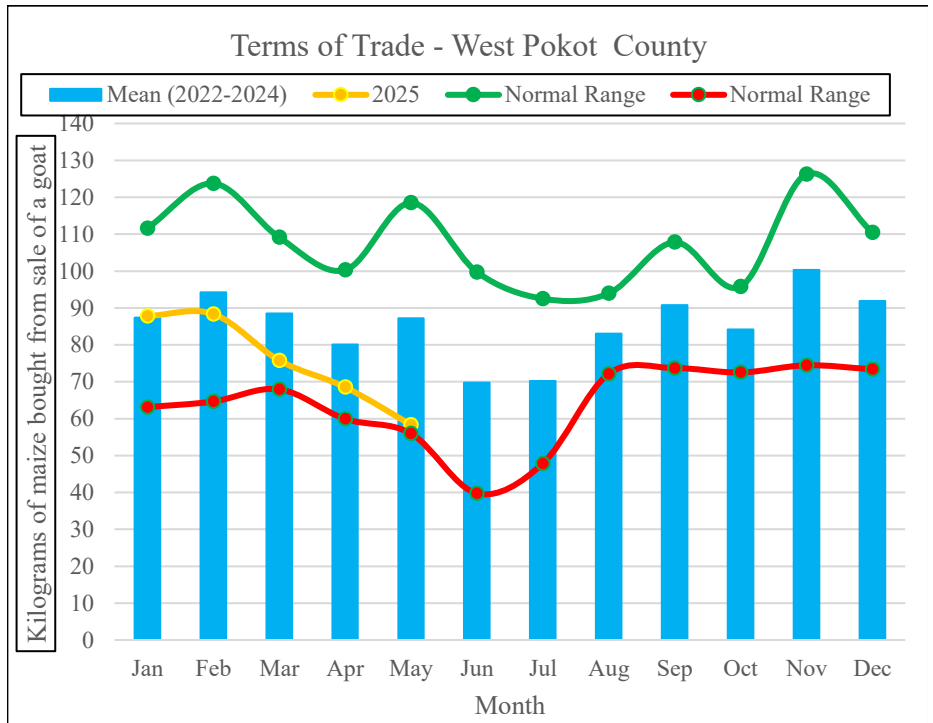


Figure 14: Terms of Trade

5.0 FOOD CONSUMPTION AND NUTRITION STATUS

5.1 MILK CONSUMPTION

- The average daily milk consumption per household per day improved by eight percent to 1.23 litres in May from 1.14 litres recorded in the previous month.
- The increase in milk consumption is attributed to improving livestock body condition, water access, pasture and browse.
- Agro Pastoral livelihood zone recorded highest milk consumption compared to Pastoral livelihood zone.
- The current milk consumption is 13 percent lower than the short-term average and four percent below normal range of 1.28-1.55 litres per household per day as shown in figure 15.

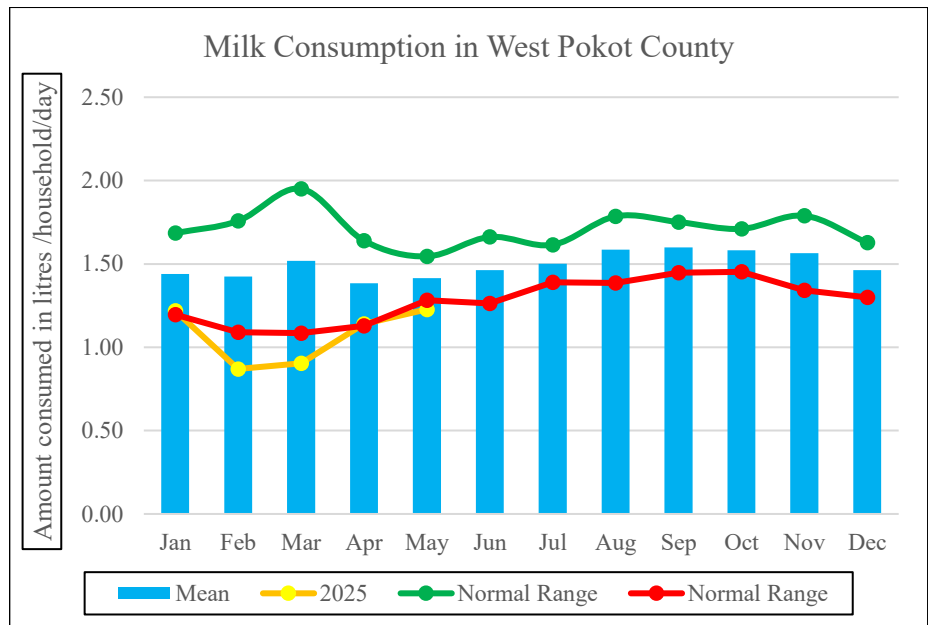


Figure 15: Milk Consumption

5.2 FOOD CONSUMPTION SCORE

- The proportion of households in acceptable food consumption category worsened to 32.0 percent in May compared to 36.0 percent previous month. The decrease has been contributed to by high food prices and low availability of food.
- The remaining 65.3 and 2.7 percent of households were both in borderline and poor food consumption categories respectively.
- Agro-Pastoral livelihood zone had the highest number of households in acceptable food consumption category compared to Pastoral livelihood zone.
- Households with acceptable food consumption score were lower in May 2025 compared to similar periods of 2024 and 2023 respectively as shown in figure 16.

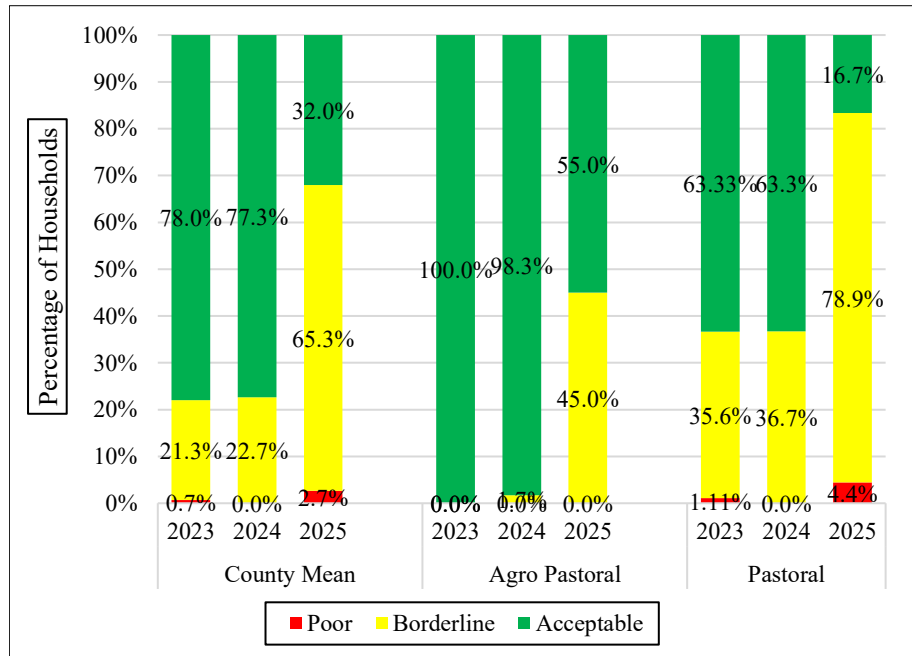


Figure 16: Food Consumption Score

5.3 HEALTH AND NUTRITION STATUS

5.3.1 Nutrition Status

- The proportion of children 6-59 months who were at risk of being malnourished improved by 0.7 percent to stand at 5.0 percent in May, compared to the previous month. The improved situation was attributed to the on-going nutrition activities and milk availability across the county.
- The Agro Pastoral livelihood zone recorded the highest proportion of children who were at risk at 10.3 percent compared to Pastoral livelihood zone with 1.5 percent. High risk of malnutrition in the Agro Pastoral was as result households preferring to sell milk and eggs rather than consumption, further aggravated with poor child care and poor health seeking behaviour.
- The current level of children who are at risk of being malnourished was below normal at 0.8 percent and 3.8 percent within the normal range of 2.7-8.8 percent as shown in figure 17.

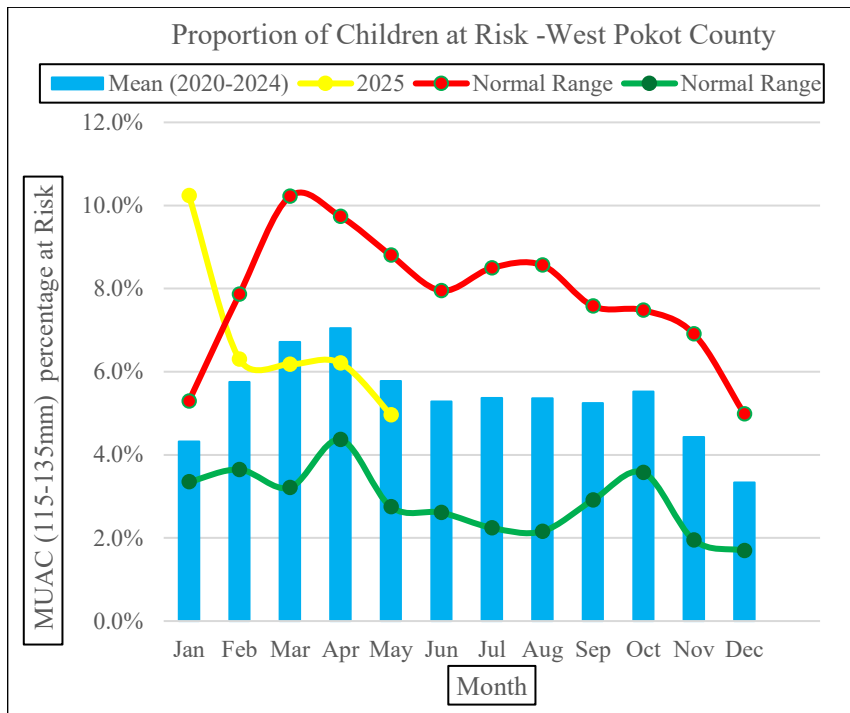


Figure 17: Children at Risk of Malnutrition

5.4 COPING STRATEGIES

- The mean of reduced coping strategy index (rCSI) improved by seven percent to stand at 5.28 in May. The improved reduced coping strategies was as result of improved optional means access to food and money to buy food.
- Households in Agro Pastoral livelihood zone had a higher rCSI compared to Pastoral livelihood zone.
- Reliance on less preferred or less expensive food, reduced portion size of meals, reduced quantity of food for children to eat, reduced number of meals eaten per day were the most frequent coping mechanisms adopted across the livelihood zones.
- The current rCSI was 251 percent above the long-term mean and 172 percent above the normal range of 1.2-2.1 mean rCSI as shown in figure 18.

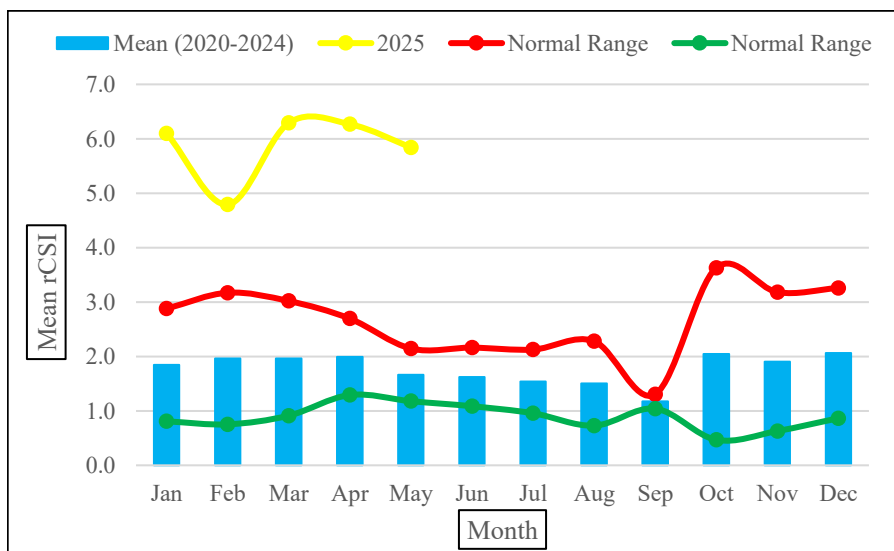


Figure 18: Reduced Coping Strategy Index (rCSI)

- Households employing stressed food-based coping mechanisms stabilized at 68.7 percent in May comparable to previous month. The stability in populations in stressed has been contributed by stability and availability of vegetable and milk/milk products as food for season.
- During the month under review households that employed higher stressed food-based copying strategies were from the Agro Pastoral livelihood zone
- About 7.3 and 8.0, 8.0 percent of households employed stressed, crisis and emergency livelihood coping mechanisms. This was indication of a stable situation.

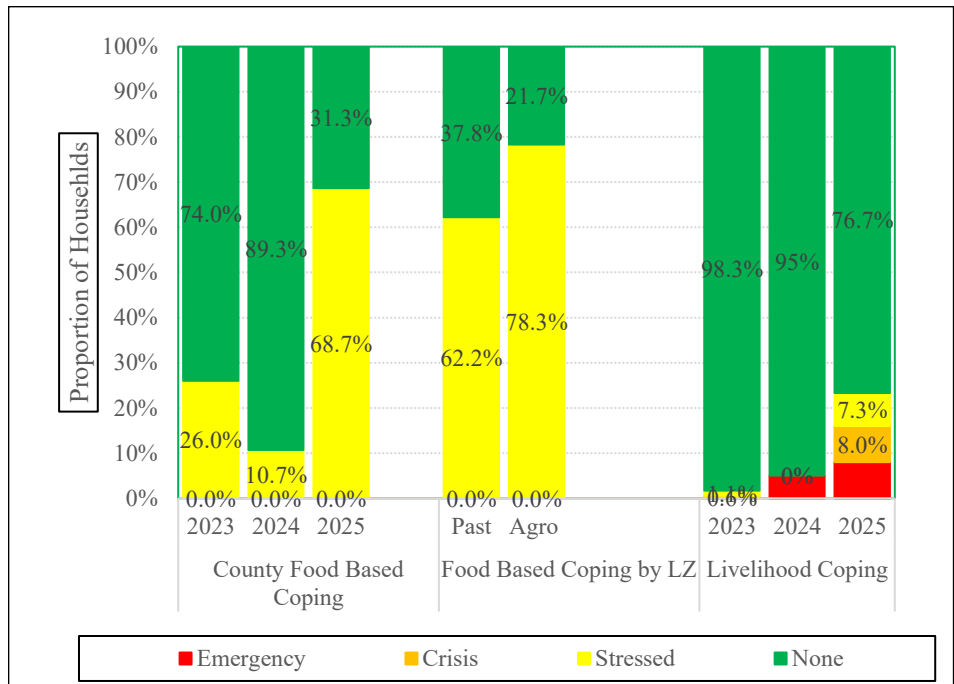


Figure 19: Households Employing Coping Mechanisms

- Households employed food-based coping strategies more frequently in May 2025 compared to similar period in 2024 and 2023 as shown in figure 19.

6.0 CURRENT INTERVENTION MEASURES

6.1 NON-FOOD INTERVENTIONS

Sector	Intervention	Quantity & Type (Cumulative to date)	Beneficiaries reached (Cumulative to date)			Supporting Agency	Geographical coverage	Quantify the cost of the intervention	Intervention gaps (Quantify and cost the intervention)
			Population/Numbers ¹	Households	Institutions (specify) ²				
Water	Rehabilitation and repair of strategic boreholes	Ongoing rehabilitation of 5 boreholes		1500	2 dispensaries, 2 schools	ACF	Pokot Central: -Dung Dung and FR Leo. Pokot North & Kacheliba: Nakuse Agamit and Kanyin gey	15M	Ongoing rehabilitation works
	Rehabilitation and repair of strategic boreholes	9 boreholes	7780	1800		Kenya Red Cross Society	Kases, Rukey Konyao, Ortum lorema, tunoyo, kokwomeses, otulpogh and surumbun and annetborehole	20M	The community was hesitant to commercialize water, hence limiting resources for community-led repairs

¹ The population in terms of human elements and numbers for the case of non-human elements

² Critical facilities like schools, health facilities, markets among others.

Sector	Intervention	Quantity & Type (Cumulative to date)	Beneficiaries reached (Cumulative to date)			Supporting Agency	Geographical coverage	Quantify the cost of the intervention	Intervention gaps (Quantify and cost the intervention)
			Population/Numbers ¹	Households	Institutions (specify) ²				
	Provision of Water Storage Tanks	Nine 10,000 tanks	7780	1800		Kenya Red Cross Society	Kases, Rukey Konyao, lorema, Ortum, Tunoyo, kokwo meses, otulpogh and surumbun and annetbo rehole	900,000	
	Drilling of Boreholes	Two boreholes		200		Zoe Foundation	Namodo and Cheptungus villages in Kodich Ward	3.6M	
	Sub-Total							18.6 M	
Livestock	Vaccination against notifiable diseases	Vaccination against black quarter, PPR and CBPP	10,338 cattle, goats and sheep			County Veterinary Department	Pokot South and Pokot Central Sub Counties	Kshs 220,000 facilitation	Vaccines which require about 50 M
	Sub-Total							0.22 M	

Sector	Intervention	Quantity & Type (Cumulative to date)	Beneficiaries reached (Cumulative to date)			Supporting Agency	Geographical coverage	Quantify the cost of the intervention	Intervention gaps (Quantify and cost the intervention)
			Population/Numbers ¹	Households	Institutions (specify) ²				
Agriculture	Provision of relief seed and farm inputs	Assorted vegetable seeds, Boma Rhodes, Orange flesh sweet potato vines, Cereals and pulses		4,600		ADS NRR	Kacheliba-Suam Kipkomo-Batei Pokot Central-Masol West Pokot-Riwo	1,064,000	On-going
	Post-harvest handling techniques	Technical training on post-harvest techniques		4,600		ADS NRR	Kacheliba-Suam Kipkomo-Batei Pokot Central-Masol West Pokot-Riwo	100,000	On-going
	Provision of relief seed and farm inputs	Support to 25 MTMSGs with assorted certified vegetable	3600	600	0	Action Against Hunger (ACF)	Pokot North (Kiwawa ward) Kacheliba (Suam, Kodich wards) Pokot South (6.8M	Supporting only 9 wards out of 20 wards. Inadequate extensi

Sector	Intervention	Quantity & Type (Cumulative to date)	Beneficiaries reached (Cumulative to date)			Supporting Agency	Geographical coverage	Quantify the cost of the intervention	Intervention gaps (Quantify and cost the intervention)
			Population/Numbers ¹	Households	Institutions (specify) ²				
		seeds layered with trainings (Butternut, Bulb Onion, Tomato, collards, spinach and indigenous vegetable)					Lelan ward) Kipkomo (chepereria ward) Pokot central (Weiwei, Lomut, masol)		on staff to support in routine trainings and follow ups.
	Construction and Equipping of Farm Ponds	20 farm ponds	2000	400		ADS NRR	Kacheliba-Suam Kipkomo-Batei Pokot Central-Masol West Pokot-Riwo	1,232,000	On-Going
	Post-harvest handling techniques	Support 25 MTMSGs on post-harvest handling techniques	3600	600	0	Action Against Hunger (ACF)	Pokot North (Kiwawa ward) Kacheliba (Suam, Kodich wards)	6.8M	Supporting only 9 wards out of 20 wards. Inadequate

Sector	Intervention	Quantity & Type (Cumulative to date)	Beneficiaries reached (Cumulative to date)			Supporting Agency	Geographical coverage	Quantify the cost of the intervention	Intervention gaps (Quantify and cost the intervention)
			Population/Numbers ¹	Households	Institutions (specify) ²				
		through training and provision of a dehydrator vegetable solar drier					Pokot South (Lelan ward) Kipkomo (chepereria ward) Pokot central (weiwei, Lomut, masol)	extension staff to support in routine trainings and follow ups.	
	Sub-total						15.896		
Health and Nutrition	Screening of Children under 5		7000		Health facilities implementing IMA M	Action Against hunger/MOH	1.Kacheliba Sub County (Kodich and Kapchok wards) 2 Pokot North (Kiwawa and Kasei wards) Pokot Central (Sekerr	2M Mass screening was conducted in 6 wards out of 20 Approximately 15M is required to conduct exhaustive mass screening	

Sector	Intervention	Quantity & Type (Cumulative to date)	Beneficiaries reached (Cumulative to date)			Supporting Agency	Geographical coverage	Quantify the cost of the intervention	Intervention gaps (Quantify and cost the intervention)
			Population/Numbers ¹	Households	Institutions (specify) ²				
							and Masol wards)		
	Malnourished children linked to facilities for support		Total malnourished 1667 SAM 288 MAM 1379		Health facilities implementing IMAM	Action Against Hunger/MOH	All Facilities implementing IMAM across the county	10M	On-Going Activity
	Integrated health and nutrition outreaches	20 integrated outreaches			20 integrated health and nutrition outreaches	Action Against Hunger/MOH	Pokot North Pokot central Kacheliba sub county	7M	Out of 215 outreaches mapped in the county, ACF is supporting only 20 sites Approximately 40M required to support all the mapped outreaches
	Health Prom		4908			Kenya RedC	Pokot North	2M	

Sector	Intervention	Quantity & Type (Cumulative to date)	Beneficiaries reached (Cumulative to date)			Supporting Agency	Geographical coverage	Quantify the cost of the intervention	Intervention gaps (Quantify and cost the intervention)
			Population/Numbers ¹	Households	Institutions (specify) ²				
	otions and sensitization community engagements					ross and MOH	and Pokot Central Sub Counties		
Subtotal								21M	
Total Cost of Interventions								52.796 M	
Total Cost of Interventions Gaps								105 M	

7.0 EMERGING ISSUES

7.1 Insecurity/Conflict/Human Displacement

- No major conflict issues that are related to drought were reported during the month under review.

7.2 Migration

- No major migrations were reported across the livelihoods. This is expected to emerge though at minimal levels

7.3 FOOD SECURITY PROGNOSIS- MAY – JUNE 2025

- According to the Kenya Meteorological Department (KMD) weather forecast for June-July-August 2025, released on May 30, 2025, the county is likely to experience rainfall with occasional breaks throughout the season. The expected rainfall amounts are likely to be above the long-term average for the season. This increased precipitation is expected to benefit agricultural activities, providing much-needed water for crops. However, residents are advised to remain vigilant for potential flooding in low-lying areas during periods of heavy rainfall.
- The vegetation condition index is expected to improve and stabilize in the next three months. This will result in improving forage condition availability for livestock. As forage conditions enhance, farmers will be better positioned to support their livestock. This, in turn, can lead to increased productivity and economic resilience in the region.
- With prevailing climatic conditions flooding events, emergence of livestock and crop pests and diseases is expected this would have a negative impact on food security. This situation necessitates urgent attention and coordinated efforts to enhance resilience in agricultural practices. By implementing sustainable farming methods and investing in pest management strategies, we can mitigate these adverse effects and safeguard food supplies for the future.

- Water for livestock and household use would be available in June 2025; however, it would be hindered by high siltation levels and breach embankments of open water sources while rangelands are expected to improve as result of expected wet days.
- It is anticipated that subsurface water supplies would have moderate to high recharge, which will result in reduction of population of dwellings and livestock at draw off locations and, ultimately, reduced breakdowns.
- Livestock productivity is likely to improve in areas with high rainfall, positively impacting food security.
- Due to the current conditions, regular rainfall is expected, which will improve food availability at household.
- Staple food prices are likely to be moderate to high compared the long-term average, since the harvests for March to May season is expected in July-August, leading to favorable terms of trade, further improve food security.
- Household food consumption is expected to stabilize due to expected reduction on reliance on the on markets.

8.0 RECOMMENDATIONS

Immediate/Short term

National Government, County Government and Development partners to collaborate on:

SECTOR	INTERVENTION	TARGET AREA	ESTIMATED COST (Ksh.) in Million
Livestock	Carrying out mass disease surveillance, vaccination and provision of supportive treatment and vaccinations in the affected areas	Lomut, Kiwawa Kapchok, Riwo Endugh, Chepareria	10
Water	Provision/supportive Water catchment and storage tanks	County wide	50
Agriculture	Formulation, adoption and implementation of new and existing arable farming technologies that conserves water	County wide	90
Health and Nutrition	Supportive Water treatment and trainings	Kiwawa, Kapchok, Lomut, Chepareria, Riwo, Endugh	10
Cross Cutting	Peace and conflict resolution missions in areas recently affected by resource-based conflicts.	Lomut, Masol, Sekker and Tapach	3.0
	Prepositioning of Non-food and food items in nearby areas to affected by floods	Sekker Ward in Pokot Central Sub-County, Riwo Ward in Pokot West Sub-County and Chepareria and Batei wards in Pokot South Sub-County	1.5