




A Vision 2030 Flagship Project



**National Drought Management Authority  
NAROK COUNTY  
DROUGHT EARLY WARNING BULLETIN FOR APRIL, 2025.**

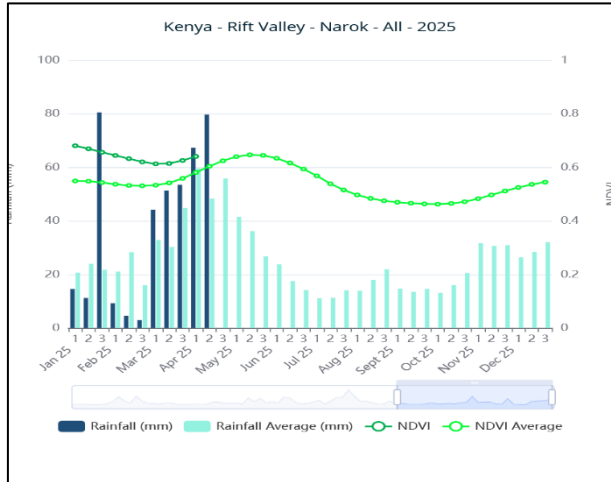
| APRIL EW PHASE  |                        | Early Warning Phase Classification              |  |                            |
|---|------------------------|---|--|----------------------------|
| <p><b>Drought Status: NORMAL</b></p>  <p><b>Shughuli za kawaida</b></p>  | <b>LIVELIHOOD ZONE</b> | <b>EW PHASE</b>                                 | <b>TRENDS</b>                                      |                            |
|   | Agro-Pastoral          | Normal  | Stable   |                            |
|   | Mixed Farming          | Normal  | Stable   |                            |
|   | Pastoral               | Normal  | Stable   |                            |
|   | <b>County</b>          | <b>Normal</b>                                   | <b>Stable</b>                                      |                            |
| <b>Drought Situation &amp; EW Phase Classification</b>  |                        | <b>Biophysical Indicators</b>                   | <b>Value</b>                                       | <b>Normal ranges</b>       |
| <b>Biophysical Indicators</b>   |                        |   |  |                            |
| <b>Rainfall</b>   |                        |   |  |                            |
| <ul style="list-style-type: none"> <li>The county recorded above normal rains with fair distribution in both time and space during the month under review.</li> </ul>   |                        | Rainfall (% of normal)                          | 124%   | 80-110                     |
|   |                        | Rainfall Amounts in mm                          | 146.93   | 48-108                     |
|   |                        | VCI-3 month                                     | Normal   | Normal-above normal        |
|   |                        | SPI -3 Month                                    | 2-3  | ≥ 3                        |
|   |                        | Forage Condition                                | Fair to Good                                       | Fair to Good               |
| <b>Forage condition:</b>  |                        |   |  |                            |
| <ul style="list-style-type: none"> <li>The county is experienced normal vegetation greenness as depicted by the vegetation condition index (VCI) this month.</li> <li>Forage condition across the livelihood ranged from fair to good.</li> </ul>   |                        | <b>Production indicators</b>                    | <b>Value</b>                                       | <b>Normal ranges</b>       |
|   |                        |   |  |                            |
|   |                        | Maize and beans Crop Condition                  | Fair to Good                                       | Fair to Good               |
|   |                        | Livestock Body Condition                        | Fair to Good                                       | Fair to Good               |
|   |                        | Milk Production (in litres)                     | 4.2  | 3-5                        |
|   |                        | Livestock Migration Pattern                     | No migration                                       | Normal                     |
|   |                        | Livestock Deaths (from Drought)                 | 0.0%   | ≤ 2%                       |
| <b>Socio-Economic Indicators (Impact Indicators)</b>  |                        | <b>Access Indicators</b>                        | <b>Value</b>                                       | <b>Normal ranges</b>       |
|   |                        |   |  |                            |
|   |                        | Terms of Trade (ToT)                            | 101  | 60-110                     |
|   |                        | Return Distance to Water Sources (Km)           | Household: 1.2<br>Livestock: 2                     | 2.0-3.0<br>2.0-4.0         |
|   |                        | Water Consumption                               | At Household: 13.03                                | ≥ 15                       |
| <b>Production Indicators</b>  |                        | <b>Utilization indicators</b>                   | <b>Value</b>                                       | <b>Normal ranges</b>       |
| <ul style="list-style-type: none"> <li>Planting and weeding is on-going.</li> <li>Livestock body condition ranged from good to fair across the livelihood zones.</li> <li>No livestock migration was registered.</li> <li>Milk production was within the normal range.</li> </ul>   |                        |   |  |                            |
|   |                        | Percentage of malnourished children 6-59 months | 1.4  | 2.5-5                      |
|   |                        | Milk Consumption (in litres)                    | 2.1  | 2-4                        |
|   |                        | Reduced Coping Strategy Index (rCSI)            | 3.9  | 2-4                        |
|   |                        | Food Consumption Score (%)                      | Acceptable: 98.5<br>Borderline: 1.13<br>Poor: 0.37 | 80 -100<br>20 -79<br>0- 20 |
| <b>Access Indicators</b>  |                        |   |  |                            |
| <ul style="list-style-type: none"> <li>Terms of trade were within the normal range.</li> <li>Household water distances were below the normal.</li> <li>Livestock watering distance were within the normal.</li> <li>Water consumption was below normal.</li> </ul>  |                        |   |  |                            |
| <b>Utilization Indicators</b>   |                        |   |  |                            |
| <ul style="list-style-type: none"> <li>Malnutrition cases were within normal range.</li> <li>Milk consumption was within the normal range.</li> <li>Majority of households were in acceptable food consumption category.</li> <li>Reduced Coping Strategy Index slightly increased when compared to previous month.</li> <li>No households employed stressed livelihood coping mechanisms.</li> </ul> |                        |   |  |                            |

|  |   |   |   |     |     |     |     |      |     |     |     |
|--|---|---|---|-----|-----|-----|-----|------|-----|-----|-----|
| <ul style="list-style-type: none"> <li>Short rains harvests</li> <li>Short dry spell</li> <li>Reduced milk yields</li> <li>Increased HH Food Stocks</li> <li>Land preparation</li> </ul> | <ul style="list-style-type: none"> <li>Planting/Weeding</li> <li>Long rains</li> <li>High Calving Rate</li> <li>Milk Yields Increase</li> </ul> | <ul style="list-style-type: none"> <li>Long rains harvests</li> <li>A long dry spell</li> <li>Land preparation</li> <li>Increased HH Food Stocks</li> <li>Kidding (Sept)</li> </ul> | <ul style="list-style-type: none"> <li>Short rains</li> <li>Planting/weeding</li> </ul> |     |     |     |     |      |     |     |     |
| <b>Dry Season</b>  | <b>Long Rains</b>   | <b>Dry Cool Season</b>  | <b>Short Rains Season</b>   |     |     |     |     |      |     |     |     |
| Jan  | Feb   | Mar   | Apr   | May | Jun | Jul | Aug | Sept | Oct | Nov | Dec |

# 1.0 CLIMATIC CONDITIONS

## 1.1 RAINFALL PERFORMANCE

- During the month under review, the county registered above normal rains. The rains received were erratic with dry days intervals across the livelihood zones. The temporal and spatial distribution was fair across the livelihood zones. The Mixed farming and Agro-pastoral livelihood zone recording more rainfall amonths when compared to areas in the pastoral livelihood zone which recorded few rainy days. The pastoral livelihood zone recorded an average of 8-12 rainy days compared the mixed and Agro-pastoral livelihood zones which recorded 10-20 rainy days.



**Figure 1: Rainfall performance and NDVI**

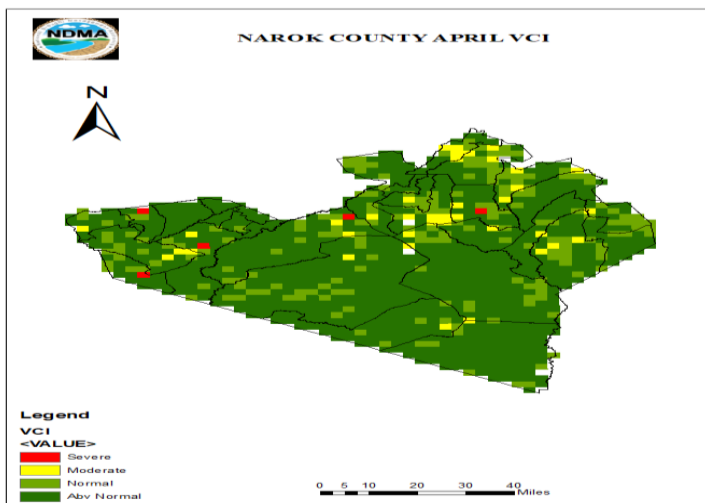
- According to WFP-VAM, CHIRPS/MODIS data, the county recorded an average of 67.29 and 79.64 milimetres of rainfall in the first and second dekad of the month compared to 59.55 and 48.26 milimetres normally respectively. The rainfall amounts received were above the previous month and the normal range as shown in figure 1.
- The county registered above normal Normalized Difference Vegetation Index (NDVI) was at 1.28 compared to 1.18 long term average (Figure 1).

## 2.0 IMPACTS ON VEGETATION AND WATER

### 2.1 VEGETATION CONDITION

#### 2.1.1 Vegetation Condition Index (VCI)

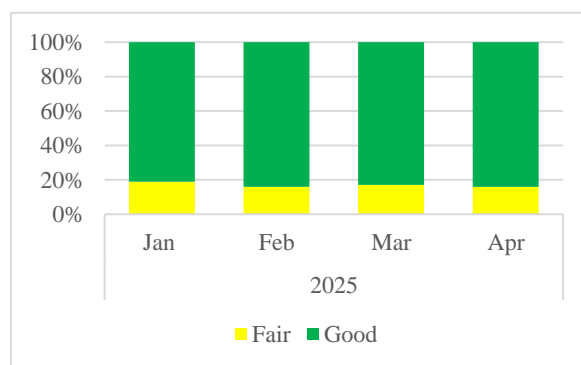
- The three months vegetation condition index (VCI-3 months) is within the normal vegetation condition category, the normal condition is due to March-April-May season on going rains which occasioned the vegetation cover greenness. The VCI value is within the normal range of 25 – 70 of vegetation condition across the livelihood zones as shown in figure 2.



**Figure 2: Three months vegetation condition index (VCI-3 months)**

#### 2.1.2 Pasture

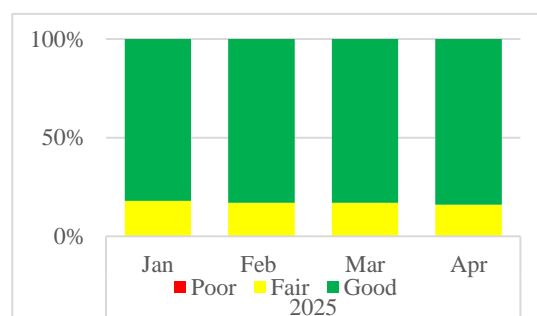
- The quality and quantity of pasture improved when compared to the previous month. The Pasture was generally good in the Mixed and Agro-pastoral livelihood zone and fair-good in the pastoral livelihood. The pasture condition improved owed to on-going showers during the month under review.
- About 84 percent of pasture was good in both quality and quantity from 83 percent in previous month as indicated in figure 3.
- The available pasture is likely to last for 2-4 months compared to the normal 2-3 months.



**Figure 3: Pasture condition**

#### 2.1.3 Browse

- The quality and quantity of browse condition improved in April when compared to the previous month. The conditions across the livelihood zones ranged was generally good.
- The quality and quantity of browse condition was within normal range during the month under review as indicated in figure 4.
- The available browse is likely to last for 3-4 months.

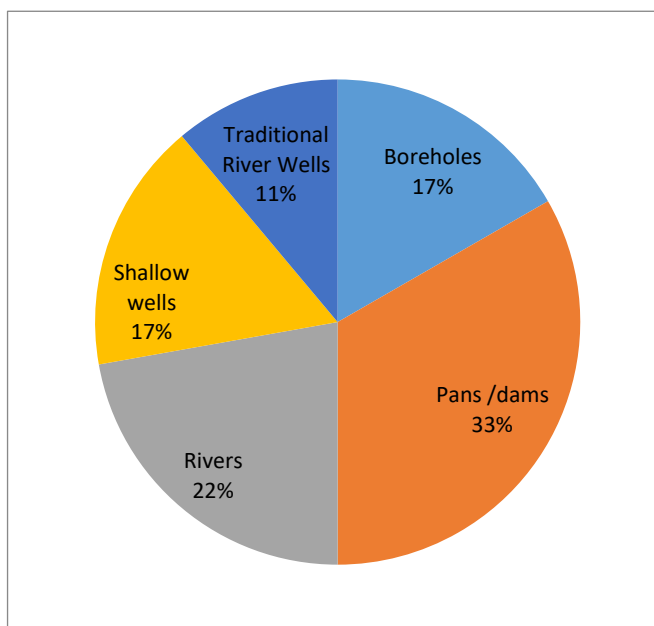


**Figure 4: Browse condition**

## 2.2 WATER RESOURCE

### 2.2.1 Sources

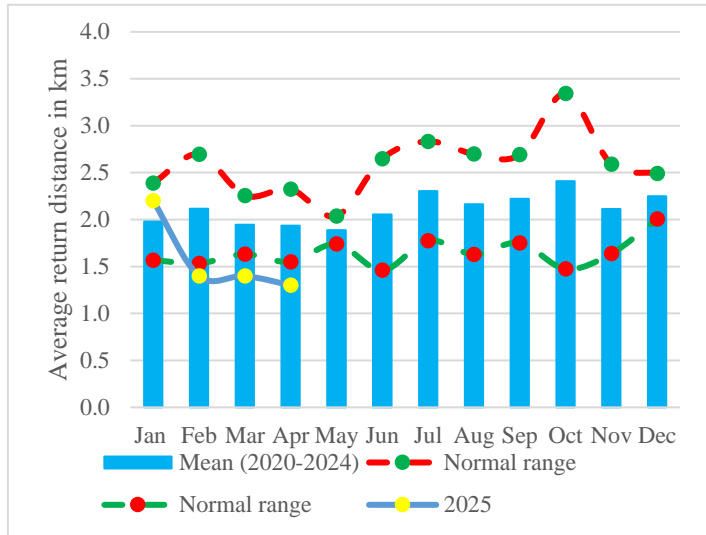
- In April, the major water sources for both human and livestock consumption were pans/dams, rivers, boreholes and shallow wells which were the normal water sources relied on. About 33, 22 and 17 percent households relied on pans/dams, rivers, boreholes and shallow wells respectively.
- State of water improved from previous month with recharge of water sources being at 80-90 percent from 70-80 percent this was occasioned by rains received during the month under review.
- The quantity and quality of water ranged from fair to good in the mixed farming and agro-pastoral livelihood zones with the pastoral livelihood zone ranging from poor to fair quality owing to siltation of open water sources.
- The current water sources were expected to last for about 2-4 months in mixed farming and agro-pastoral livelihood zones. In pastoral livelihood zone, the water is likely to last for 2-3 months (Figure 5).
- The current water situation is above the normal range at this time of the year.



**Figure 5: Water Sources in Narok County**

### 2.2.2 Household Access and Utilization

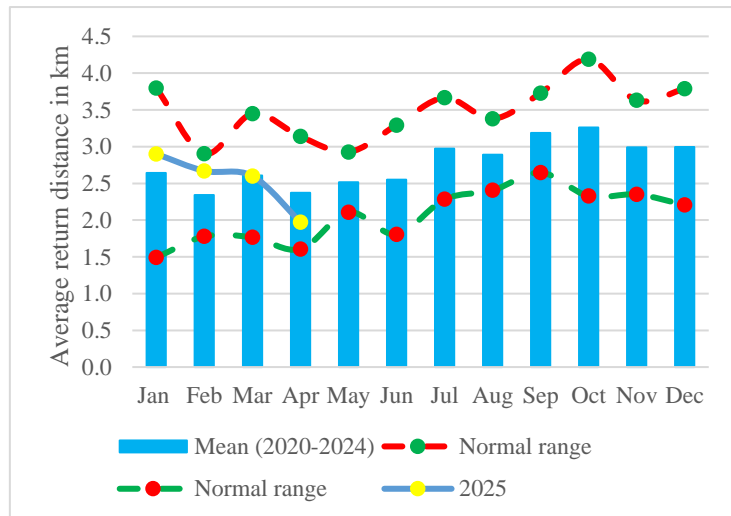
- The average return distances from the households to water sources decreased to 1.3 km from 1.4 km when compared to the previous month (Figure 6).
- The pastoral livelihood zone trekked the longest distance of an average of 2.1 km compared 0.5-1km in the mixed farming and agro-pastoral livelihood zones which recorded the shortest distance.
- Water consumption per person per day was at 13.0 litres.
- The Cost of a 20 litre *jerican* of water ranged from Kshs.0 -5 in mixed farming and agro-pastoral livelihood zones and Kshs 0-10 in pastoral areas.
- Approximately 0.5 percent of the sampled households purchased water during the period under review. Minimal water treatment methods were employed in the sampled household before consuming with boiling being the most used water treatment method by households.
- The current households trekking distances to water source was 32.9 percent below the normal range (figure 6).



**Figure 6: Distances to water sources**

### 2.2.3 Livestock Access

- The average return distances from livestock grazing areas to watering points reduced to 2.0 km from 2.6 km when compared to the previous month.
- In the Pastoral livelihood zones, livestock trekked for 4.3 km and about 0.5-1 km Mixed farming and agro-pastoral livelihood zones.
- The watering frequency daily across all the livelihood zones in the county.
- The current average distance from livestock grazing areas to watering points was within the normal range as indicated in figure 7.



**Figure 7: Distances from grazing areas to water points**

### 3.0 PRODUCTION INDICATORS

#### 3.1 LIVESTOCK PRODUCTION

##### 3.1.1 Livestock Body Condition

- In April, about 67 percent of livestock had good smooth appearance body condition and 33 percent of livestock had moderate neither fat nor thin body condition.
- The body condition for cattle, sheep and goats ranged from fair to good across all the livelihood zones which was within the normal range this was attributed to availability forage and water availability coupled with minimal livestock diseases and reduced trekking distances to watering points.
- The current body condition is within the normal range at this time of the year. The situation is likely to remain stable for the next three months(Figure 8).

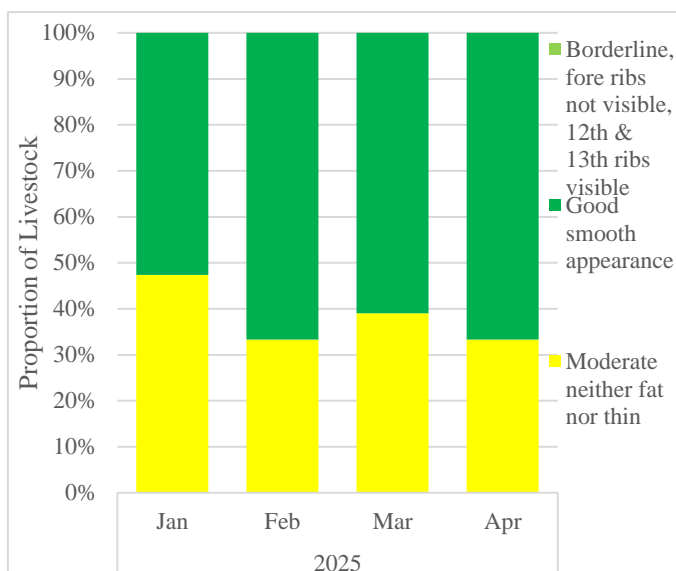


Figure 8: Livestock body condition

##### 3.1.2 Livestock Diseases

- In Narok County the endemic diseases witnessed include East Coast Fever, anaplasmosis, trypanosomiasis with persistent livestock disease outbreaks being Lumpy Skin disease (LSD), Foot and Mouth Disease in Narok West subcounty and Anthrax in Ilmotiok, Emurua Dikirr and Koyiaki wards. Measures taken to control the disease outbreaks were farmers request for private veterinary service providers.

##### 3.1.3 Milk Production

- The average milk produced per household per day increased to 4.2 litres from 3.8 litres in the previous month.
- Mixed farming and Agropastoral livelihood zones recorded the highest litres at 3-4 litres/day/household in and 2 litres/day/household in the pastoral livelihood zone. The low milk production in the pastoral livelihood zone.
- The current milk production is within the normal range shown in figure 9.

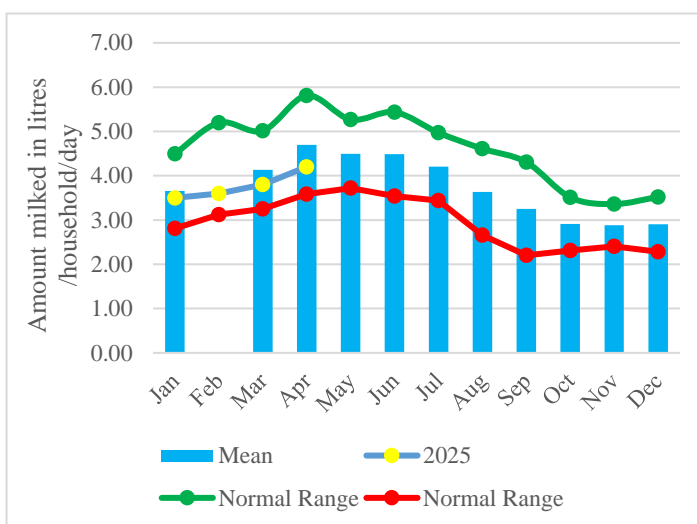


Figure 9: Milk production in Narok County

### 3.2 RAIN-FED CROP PRODUCTION

#### 3.2.1 Stage and Condition of Food Crops

- The main crops planted in the Mixed farming and Agro-Pastoral livelihood zones were maize, beans and Irish potatoes. Wheat and barley are mostly grown in large scale scheme for commercial purpose.

- Most of crops in the Mixed Farming Livelihood zones are in maturity stage while others at knee high stages for maize and beans are in fair to good condition.
- Tomatoes, onions and cabbages are the most preferred crops in irrigation schemes along seasonal rivers in Mosiro, Pulunga and Naroosura region.

## 4.0 MARKET PERFORMANCE

### 4.1 LIVESTOCK MARKETING

#### 4.1.1 Cattle Prices

- The average market price of a medium sized cattle rose by ten percent to Ksh. 39,778 from Ksh. 36, 167 when compared to the previous month.
- Cattle prices were higher in Pastoral livelihood zone at Ksh. 51,000 compared to Ksh 22,000 in the Agro- Pastoral livelihood zone. The favourable cattle price is owned to good body condition and favorable market prices in the pastoral livelihood zone.
- The current market price of cattle is 72 percent above the normal range of Ksh. 23,057 (Figure 10).

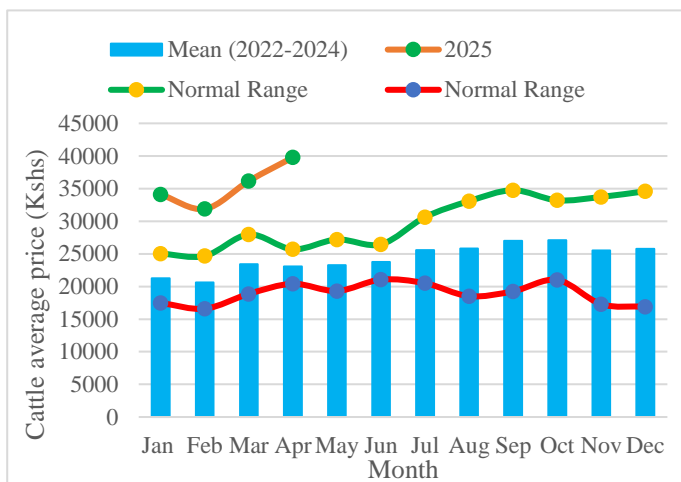


Figure 10: Cattle prices in Narok County

#### 4.1.2 Small Ruminants Prices (Goat Price)

- In April, the average market price a medium sized mature goat increased by 2.5 percent that is to Ksh. 6,639 from Ksh. 6,479 in the previous month, the price increase is owed to demand of goats for restocking coupled with favourable body condition across the livelihood zones.
- The Pastoral and Agro-pastoral livelihood zones recorded the higher price of Ksh. 7,000- 8,000 compared to Ksh. 6,000-6,500 in the mixed farming livelihood zone.
- The current price is 27.3 percent higher than the long-term average as shown figure 11.

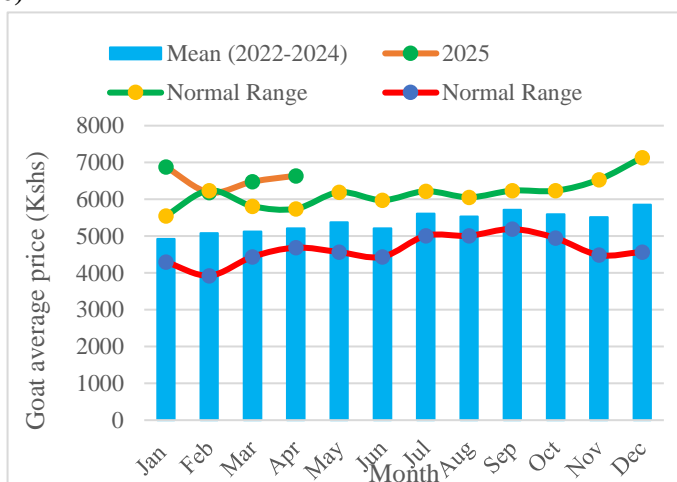


Figure 11: Goat prices in Narok County

## 4.2 CROP PRICES

### 4.2.1 Maize

- The average market price of maize per kilogram at the market level increased to Ksh.66 from Ksh.61 when compared to the previous month. The increase in price is owed diminishing stock at household level. The highest price was recorded in Pastoral Livelihood zone at Ksh.78 and Ksh.60 and Ksh.52 in the Mixed farming and Agro-pastoral livelihood zones respectively.
- The current maize price is 1.8 percent below the normal as shown in figure 12.

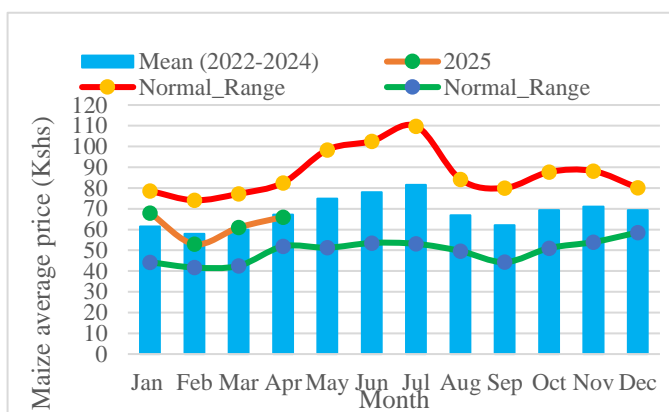


Figure 12: Maize price in Narok County

### 4.2.2 Beans

- The average market price of beans per kilogram increased to Ksh.141 from Ksh.134 when compared to the previous month.
- Beans price was higher in Agro-Pastoral and in Pastoral livelihood zones at approximately Ksh.148-150 compared to Ksh.125 in Mixed Farming livelihood zone.
- The current beans price is within the normal range as indicated in figure 13.

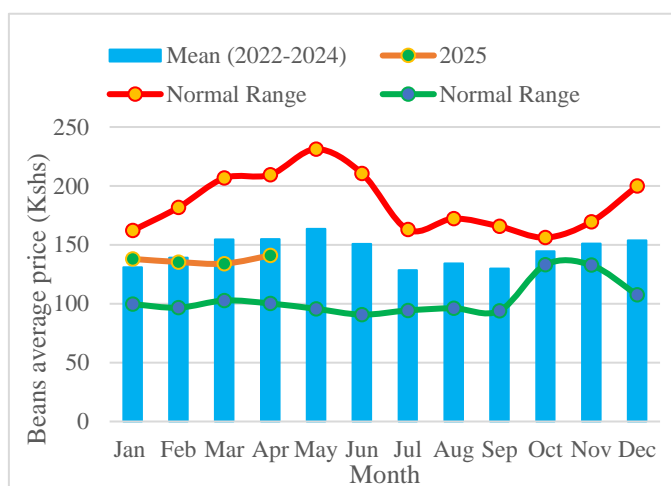


Figure 13: Beans price in Narok County

### 4.3 Livestock Price Ratio/Terms of Trade

- The Terms of Trade (TOTs) under the month under review reduced to 101 from 106 as recorded in the previous month. This implies that a sale of a medium-sized goat fetched 101 kgs of cereals.
- The TOTs reduced is due to increase in maize and goat price across the livelihood zones during the month under review.
- The average current terms of trade is within the LTA (Figure 14).

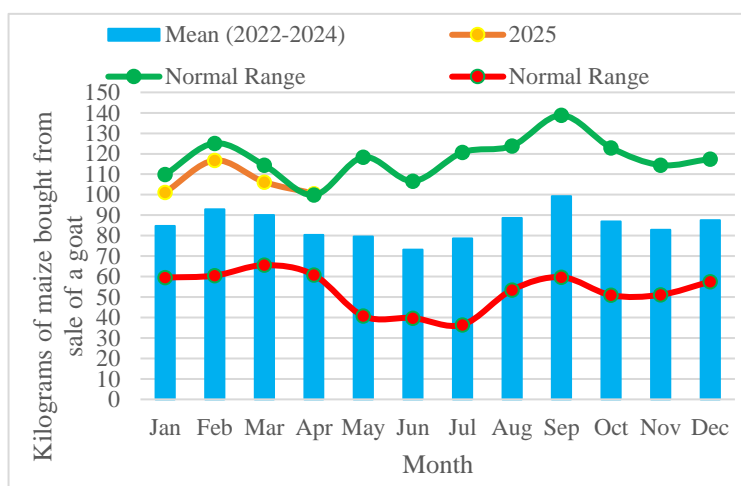


Figure 14: Terms of Trade

## 5.0 FOOD CONSUMPTION AND NUTRITION STATUS

### 5.1 Milk consumption

- In the month of April, the average daily milk consumption per household remained stable when compared to the previous month. The steadiness is owed to increase in milk production at household level.
- There was no major livelihood variation in milk consumption during the month under review.
- The current milk consumption is slightly below the normal range as shown in figure 15.

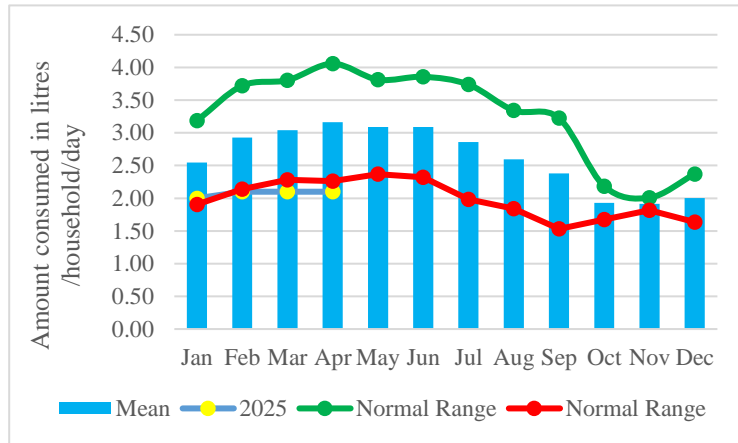


Figure 15: Milk Consumption

### 5.2 Food consumption score

- The proportion of households in acceptable (consuming at least cereals, pulses, vegetables-other vegetables and milk/livestock products in last seven days), borderline (consuming cereals, pulses, vegetables-other vegetables in last seven days) and poor (consuming cereals and vegetables-other vegetables in last seven days) food consumption category was 98.5 percent from 100 percent in acceptable category when compared to the previous month.
- Most of the sampled households were within acceptable food consumption category in Agro-pastoral and mixed farming livelihood zones. In the pastoral livelihood zone about 95.5, 3.4 and 1.1 percent were in Acceptable, borderline and poor category respectively.
- Most of the households were consuming 2-3 meals per day contrary to 3-4 meals per day. The meals consisted of three food groups which include cereals, pulses and/or milk/livestock products compared to the normal of four or more food groups which include cereals, pulses, vegetables-other vegetables and/or milk/livestock products across the livelihood zones (Figure 16).
- The stable food consumption pattern is attributed to food availability and favourable terms of trade across the livelihood zones and continuous sensitization on importance of diet diversity by partners in the county.

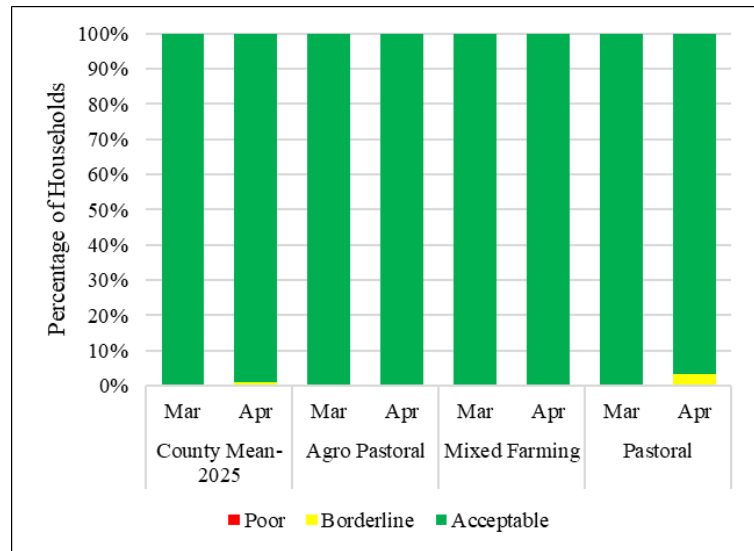
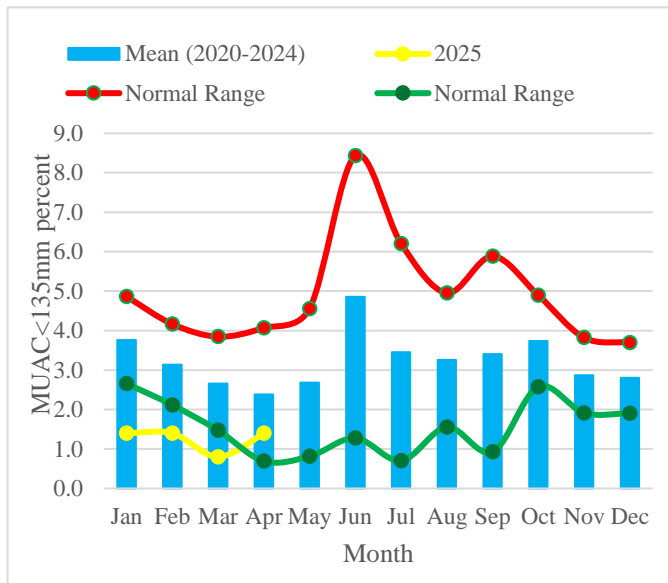


Figure 16: Food consumption Score

### 5.3 HEALTH AND NUTRITION STATUS

#### 5.3.1 Nutrition Status

- During the month under review, the proportion of children under five at risk of malnutrition increased to 1.4 percent from 0.80 percent when compared to the previous month.
- The Pastoral livelihood zone recorded the highest proportion of children who were at risk of being malnourished were at 3.2 percent with Agro-pastoral and Mixed Farming having minimal to no children under risk of malnutrition.
- Most affected areas include Naroosura(2.7 percent) and Siana(6.2 percent) wards both in the pastoral livelihood zone. The situation is likely to remain stable due food availability coupled with continuous sensitization by the county government on importance of dietary diversity.



**Figure 17: Nutrition Status in Narok County**

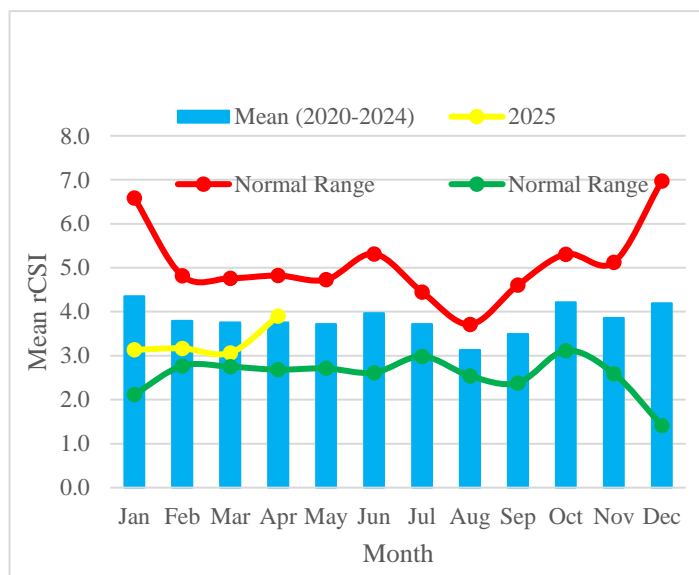
- The current proportion of children who are at risk of being malnourished is within the long-term average as shown in figure 17.

#### 5.3.2 Health Status

- During the month under review, fever cases were recorded which was occasioned by cold temperatures and a few diarrhoea cases being observed mostly in the pastoral livelihood zone.

#### 5.3.3 COPING STRATEGIES

- During the month under review approximately 3.9 percent of the sampled household employed reduced Coping Strategy Index (rCSI) having increased slightly from 3.1 percent when compared to the previous month.
- The Pastoral households reported a higher CSI at 11.7, indicating a high vulnerability to malnutrition cases when compared to Agro-pastoral and mixed farming livelihood zone households relatively employing minimal to no coping mechanisms.



**Figure 18: Reduced coping strategy Index**

- Reliance on less preferred or less expensive food, reduced portion size of meals, reduced quantity of food for children to eat, reduced number of meals eaten per day were the most frequent coping mechanisms adopted in Pastoral livelihood zone.
- The current rCSI is within the long-term mean as shown in figure 18.

- No households in sampled areas employed stressed food based coping mechanism in the month of October across the livelihood zone

## **6.0 CURRENT INTERVENTION MEASURES**

### **6.1 NON-FOOD INTERVENTIONS**

- No non-food intervention is ongoing in the county

### **6.2 FOOD INTERVENTIONS**

- No food intervention is ongoing in the county

## **7.0 EMERGING ISSUES**

### **7.1 Insecurity/Conflict/Human Displacement**

- No major confirmed conflict issues related to drought were reported during the month under review.

### **7.2 Migration**

- The County did not record any livestock migration during the month under review.

### **7.3 FOOD SECURITY PROGNOSIS**

- Based on Kenya Meteorological Department (KMD) weather forecast May, 2025 issued on 30<sup>th</sup> April indicates that the total amounts of rainfall expected are likely to be near to above average. Occasional storms are also likely to be experienced.
- Livestock productivity is likely to improve in areas with forecasted above normal rains. As result, of the stated indicators positive impact on food security would be realized.
- Water for livestock and household use would be available in May 2025 due to rainfall recharge however it may lead to high siltation levels of open water sources that has been persistent overtime leading to poor water quality mostly in the pastoral livelihood zone.
- Maize prices are likely to remain higher than the long-term average owing to diminishing stock at household level which might lead to unfavourable terms of trade.
- Household food consumption patterns are likely to worsen due depletion of household stock and high food prices hence increase of households in borderline and poor food consumption scores. This would lead to increased coping strategies.

## 8.0 Recommendations

### Immediate/Short term

#### Narok Summary of response priority sectoral interventions for the next two months

| Sectors & Interventions                              | Activities to be supported        | Areas to be covered <sup>1</sup>                    | Cost of planned support | Available resources  | Resource gap         | Time frame for the support | Possible source of resources       |
|--|-----------------------------------|---|-------------------------|----------------------|----------------------|----------------------------|------------------------------------|
| <b>Water</b> (Supporting the operation of boreholes) | Repair and servicing of boreholes | Naroosura/Majimoto, Mosiro                          | 66,000,000              | 26,000,000           | 40,000,000           | April -May                 | Narok County Government, NDMA, WVK |
| <b>Livestock</b> (Supportive Vet. Services)          | Vaccinations and treatments       | Naroosura/Majimoto, Mosiro, Siana, Naikarra, Marara | 40,000,000              | 0                    | 40,000,000           | April -May                 | Narok County Government            |
|  |                                   | Total   | <b>106,000,000.00</b>   | <b>26,000,000.00</b> | <b>80,000,000.00</b> |                            |                                    |